

Fifth Avenue's Most Private Address

Seven Twelve Fifth Avenue

Uncover
a New
Era of
Midtown
Mastery

Fifth Avenue's Most Private Address.

Rediscover a Plaza District Classic.

Powerful and grandly intimate, the timeless building at 712 5th Avenue is a monument to ambition with quintessential Central Park views. Each boutique floorplate of this premium commercial offering comprises approximately 9,800 RSF for Tower Floors (Floor 17-52) and 13,000 RSF for Base Floors (Floor 6-14) with partial to full floors available. Original architects Kohn Pederson Fox recently completed stunning upgrades and a bold lobby renovation, inspiring a new era of excellence in the Plaza District.

A Pillar of Midtown Prestige.

An Iconic Address

Enjoy the luxury of true focus, elevated above New York City's most iconic avenue. Private, prestigious and undeniably premium; every moment here raises the everyday into the extraordinary.





The Business of Bold Perspectives.

Be Untouchable

Surrounded on all sides by New York City's most iconic buildings and imbued with the energy of the streets below, every workspace provides undeniable presence and understated style.

Where Purpose Meets Point of View.

Seize a New Perspective

Here, presiding over Midtown, an address to truly impress. Endless city views meet moments of reflection, celebration and determination, while a coveted Central Park backdrop inspires what's next.





A Grand Arrival for Grander Pursuits.

A Fifth Avenue Transformation
The lobby is evolved for a new generation by original architects Kohn Pedersen Fox, featuring a curved acrylic entrance and marble reception.

Powerfully Intimate Floor Plans.

Floor Availability

46				9,866 RSF
45	Avail. 10/1/25	3,160 RSF	4,315 RSF	2,306 RSF
44	Available 10/1/2025			9,724 RSF
43	Available 10/1/2025			9,724 RSF
42	Available 10/1/2025			9,777 RSF
41			Available 10/1/2025	6,515 RSF

34 9.804 RSF

24 9,734 RSF

21	6,545 RSF
20	9,697 RSF

17	Avail. 9/1/25 2.959 RSF
----	-------------------------

14 12.930 RSF

10 Available 6/21/2025 12,930 RSF

8	Available 6/12/2025	7.815 RSF	1.889 RSF	3.205 RSF
---	---------------------	-----------	-----------	-----------

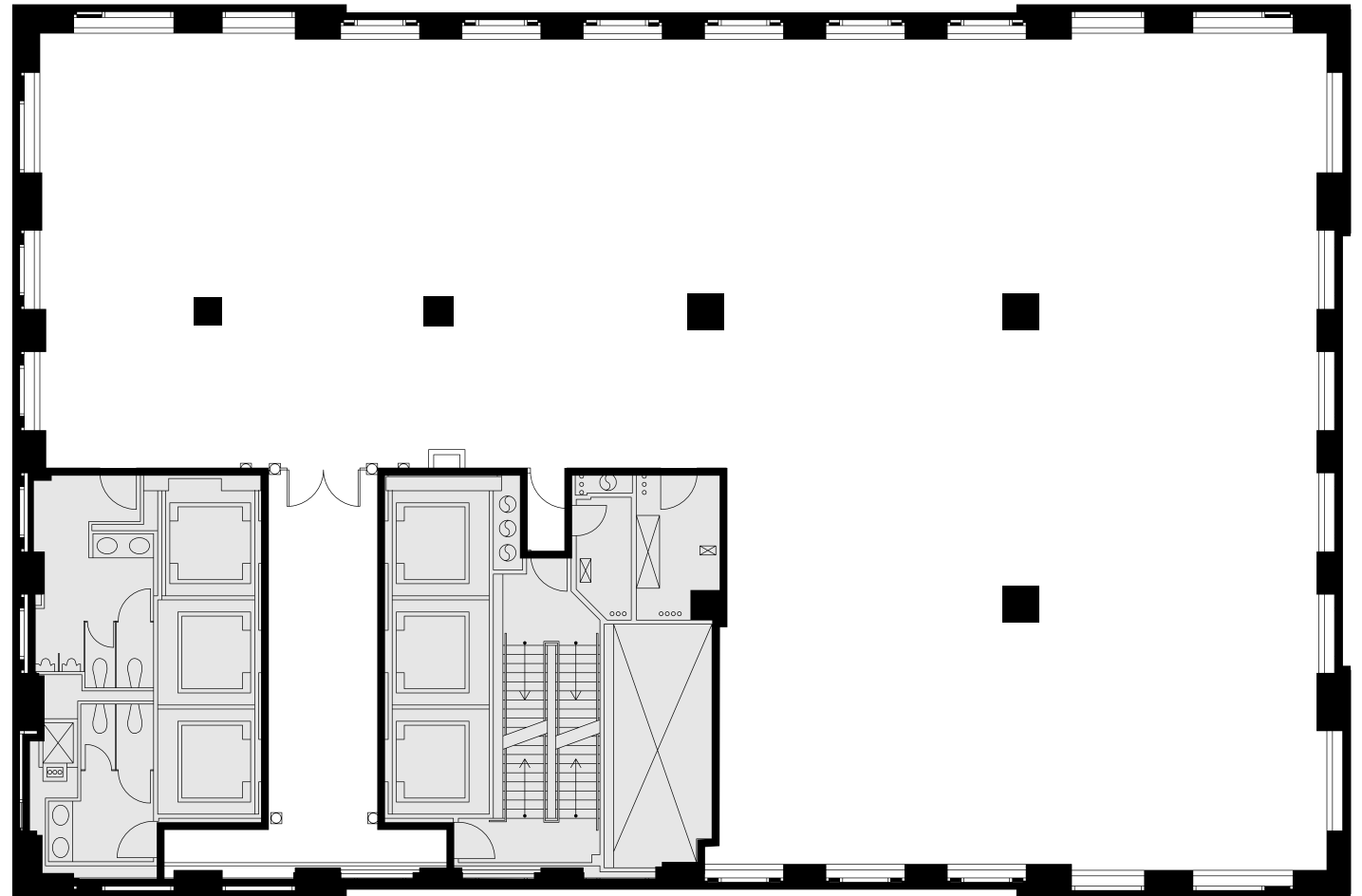
The Space for Success.

Approximately 9,800 RSF per Tower Floor (Floor 17-52)

Set serenely high above 5th Avenue, the newly renovated workspaces of 712 5th Avenue offer complete customization—with partial to full floors available for lease, grand windows and six high-speed elevators. The building itself is certified LEED Gold, with a striking lobby renovation completed by original architects Kohn Pedersen Fox. Just beyond the lobby's uniquely curved acrylic entrance, music played on a distinctive Poul Henningsen designed piano invites tenants and guests daily.

Representative
Full Floor Plan

Full Floor
Core Plan

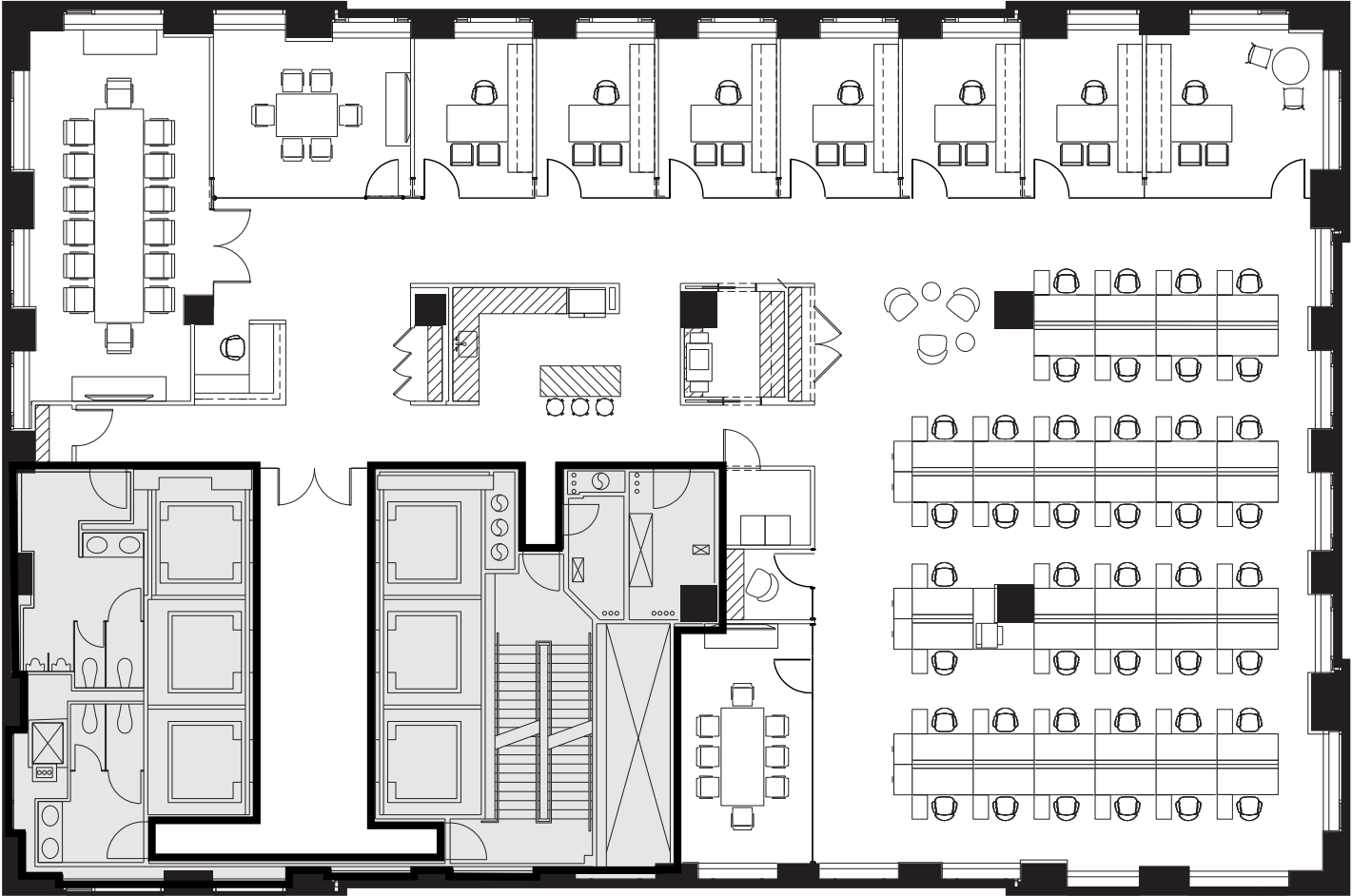


+/- 9,800 RSF

Representative
Full Floor Plan

Open
Plan

+/- 9,800 RSF

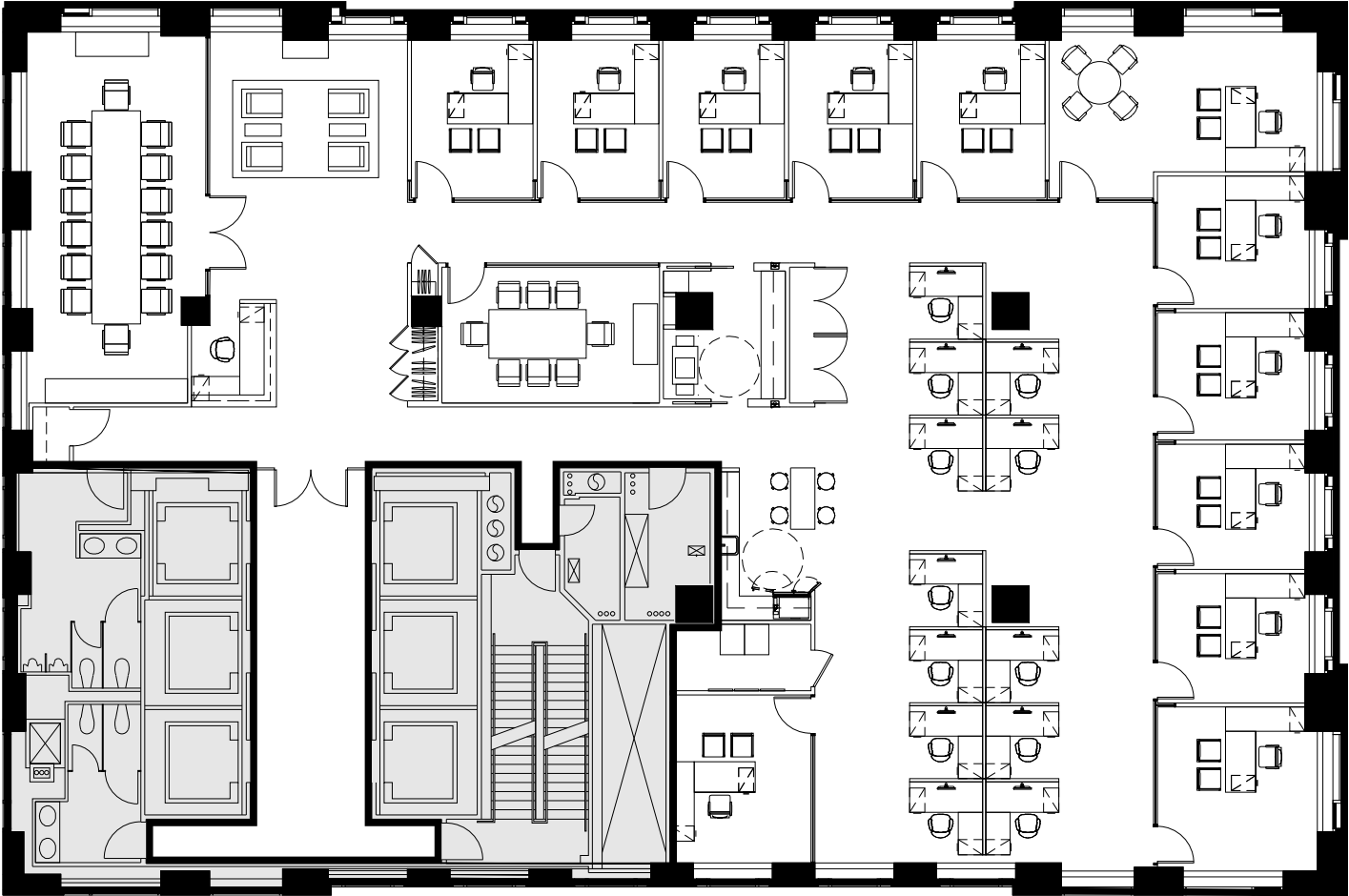


Executive Office	1	Meeting Room	1
Private Offices	6	Pantry	1
Reception	1	Phone Room	1
Conference Rooms	2	Copy Room	1

Representative
Full Floor Plan

Office
Plan

+/- 9,800 RSF

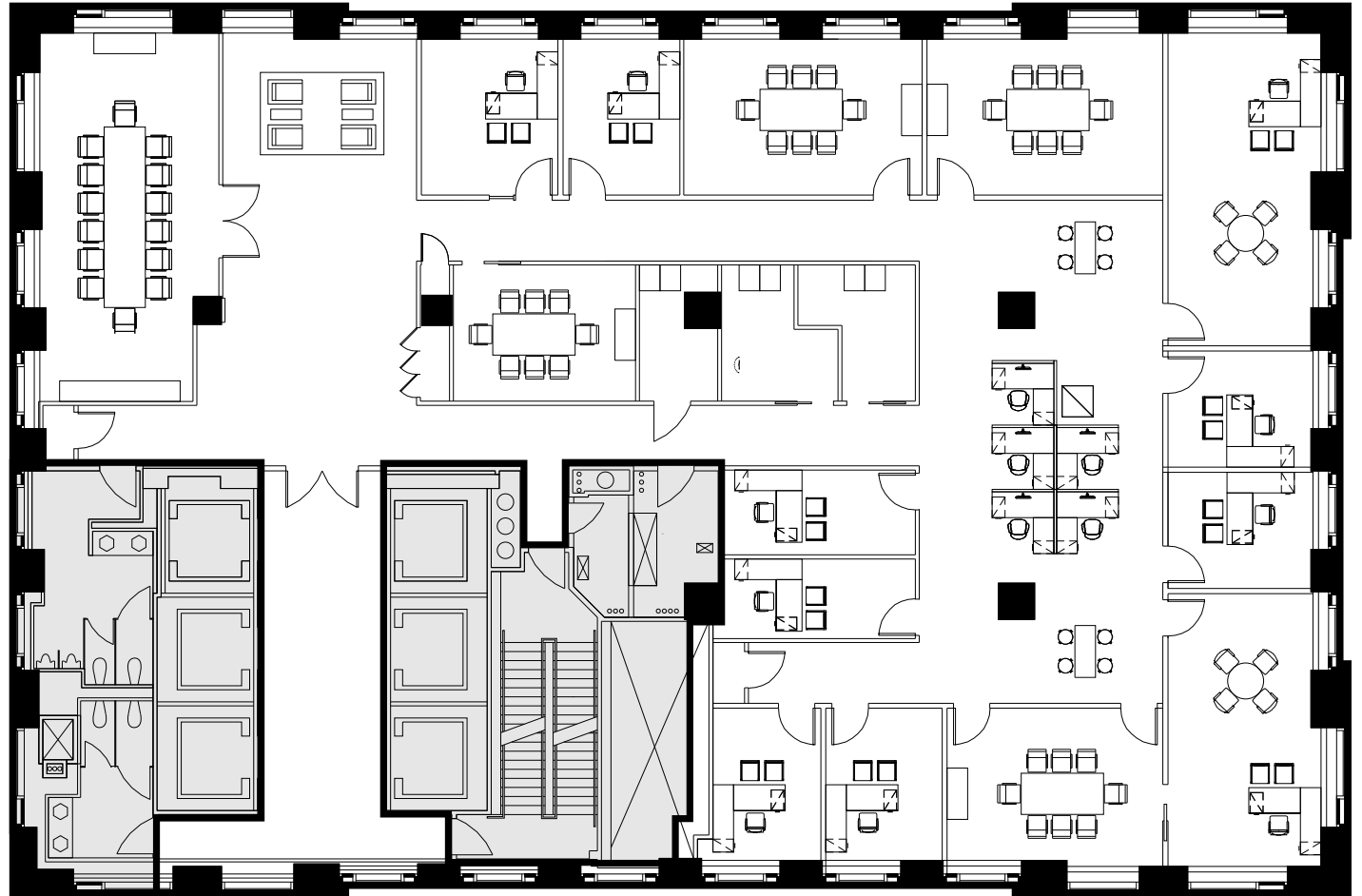


Executive Office	1	Board Room	1	Open Pantry	1
Private Offices	11	Conference Room	1	Copy Area	1
Workstations	12	Cafe	1	Coat Closets	3
Reception	1	IT Room	1		

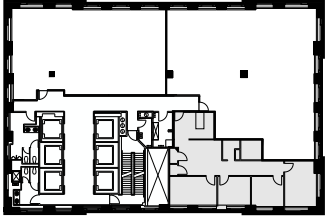
Full Floor Plan Existing Conditions

46th Floor

9,866 RSF



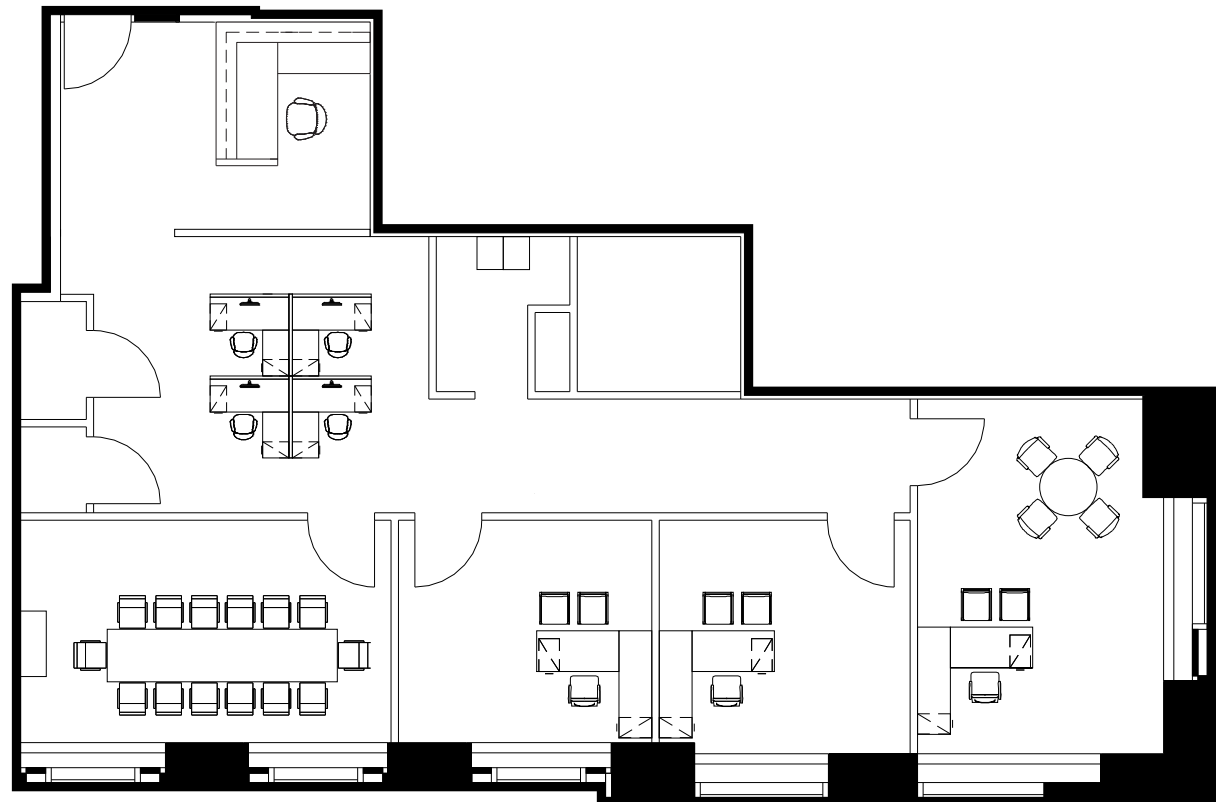
Key Plan



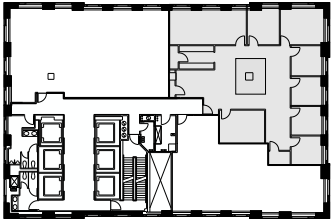
Partial Floor Plan (As Built)

45th Floor

2,306 RSF



Key Plan

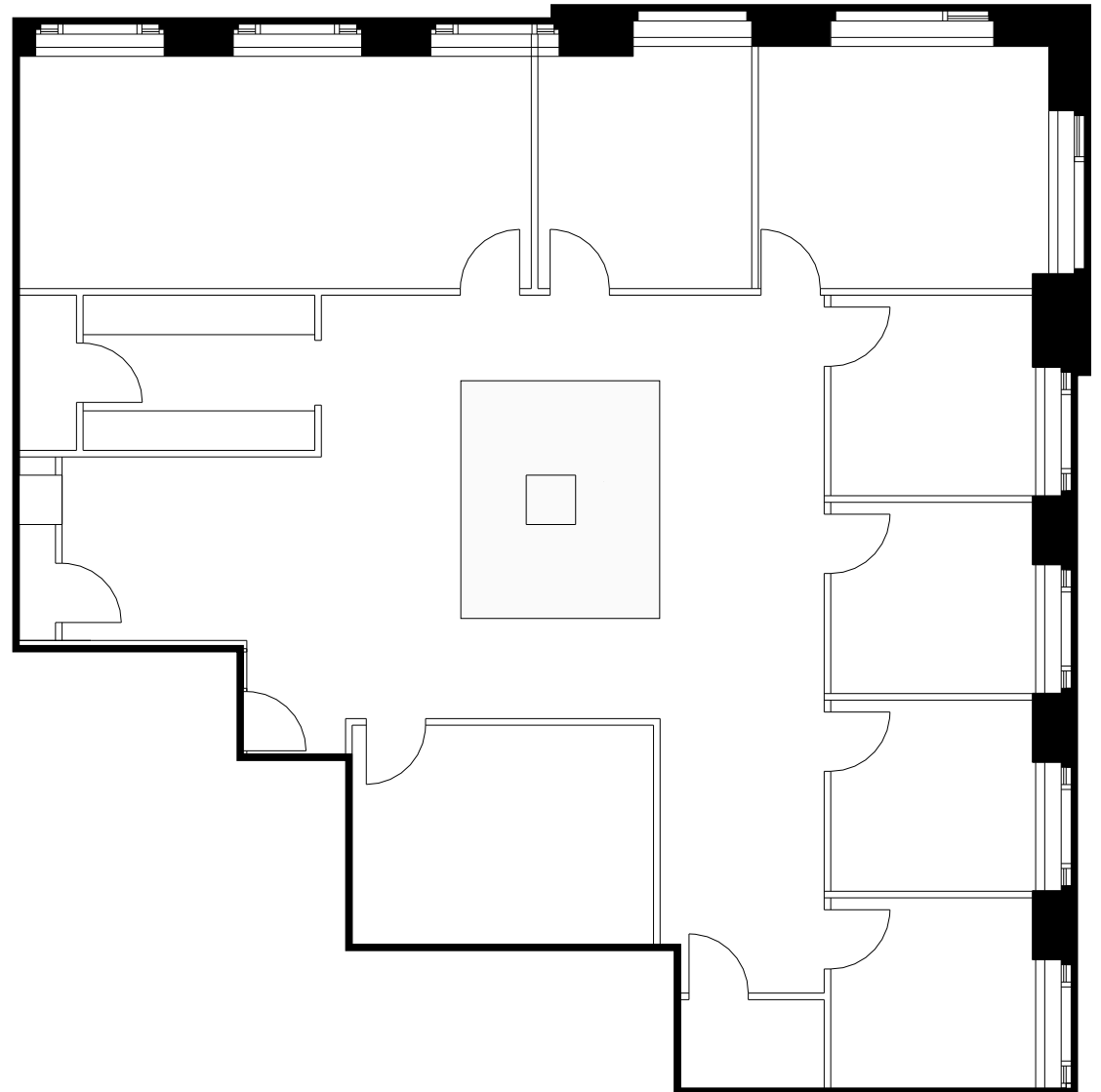


Partial Floor Plan (As Built)

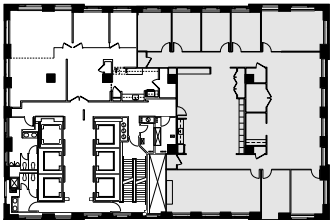
Available 12/1/2024

45th Floor

4,315 RSF



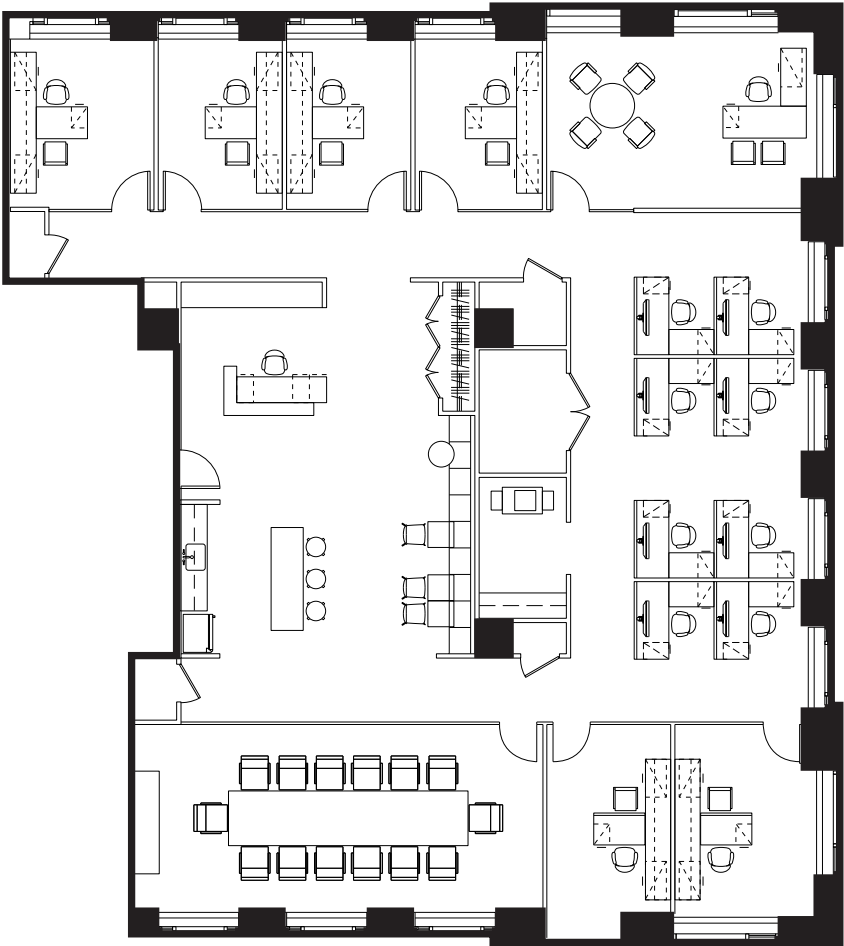
Key Plan



Partial Floor Plan
(Test Fit)

38th
Floor

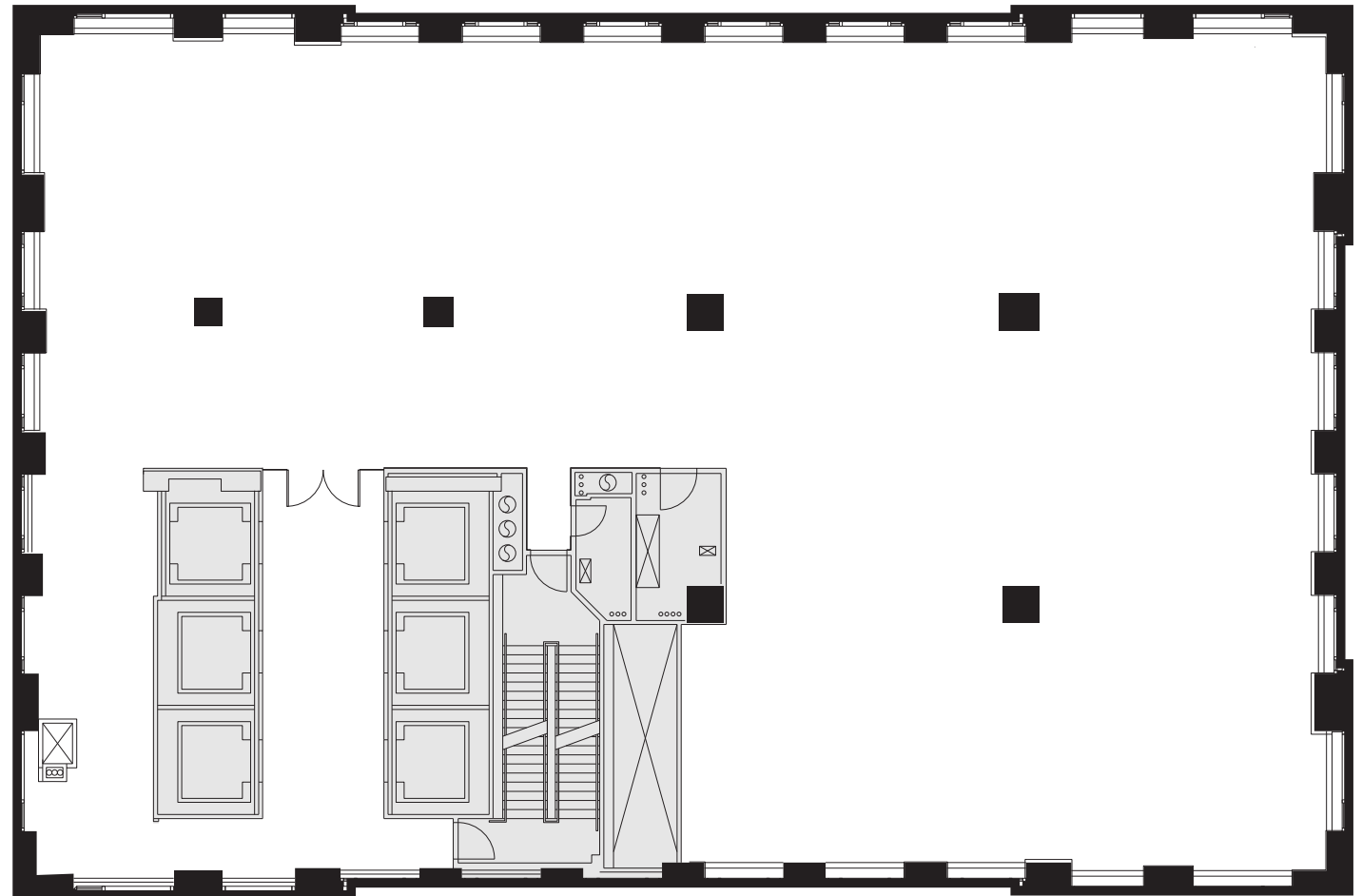
7,102 RSF



Executive Office	1	Conference Room	1	Copy Area	1
Private Offices	6	Pantry	1	Storage Room	4
Workstations	8	Enclosed Collaboration Seats	14	Computer Room	1
Reception	1	Open Collaboration Seats	9		

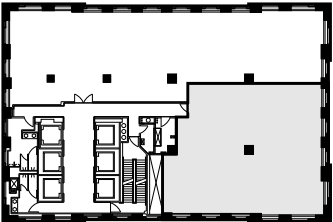
Full Floor
Core Plan

34th
Floor



9804 RSF

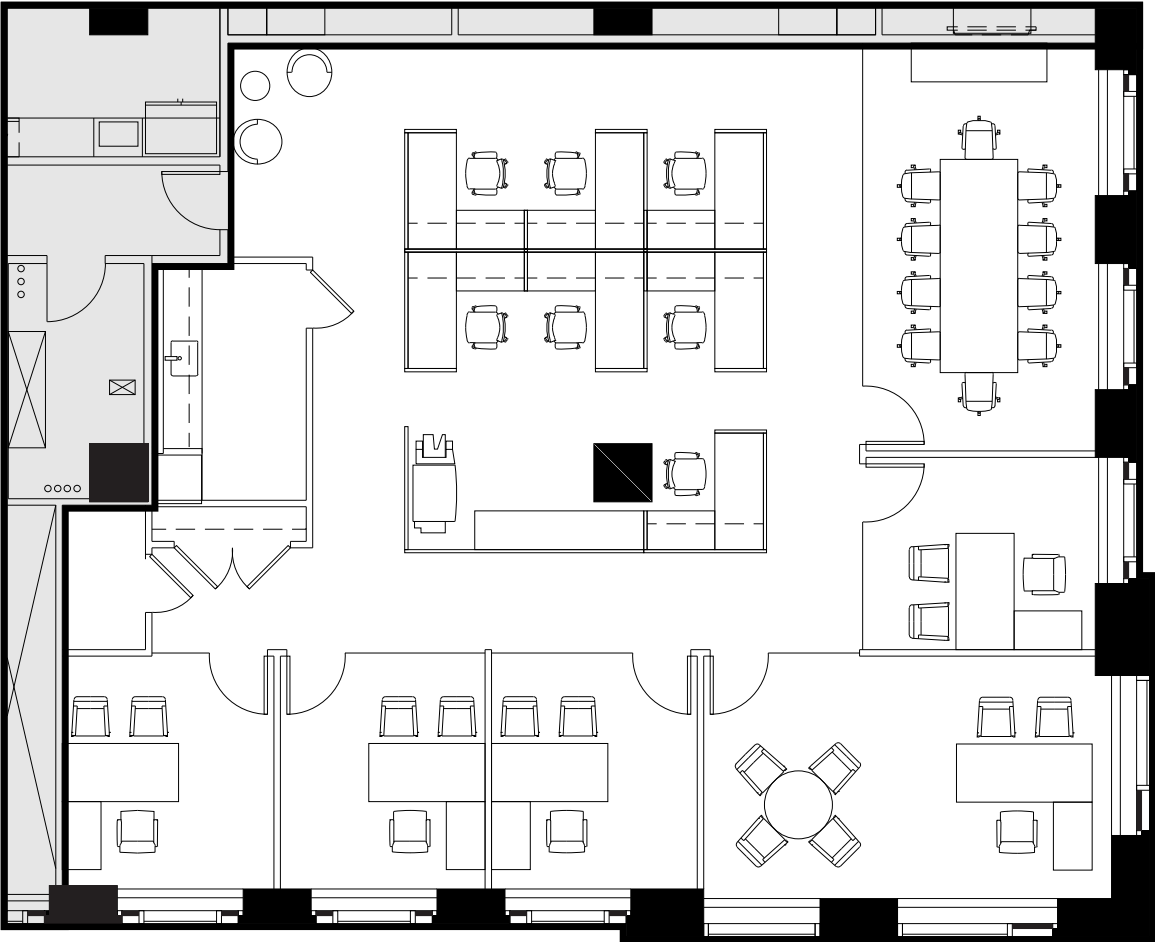
Key Plan



Partial Floor Plan
(New Prebuilt)

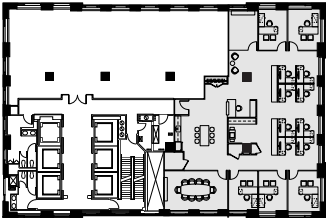
33rd
Floor

4,133 RSF



Executive Office	1	Conference Room	1	Copy Area	1
Private Offices	4	IT Room	1	Storage Room	1
Workstations	7	Open Pantry	1		

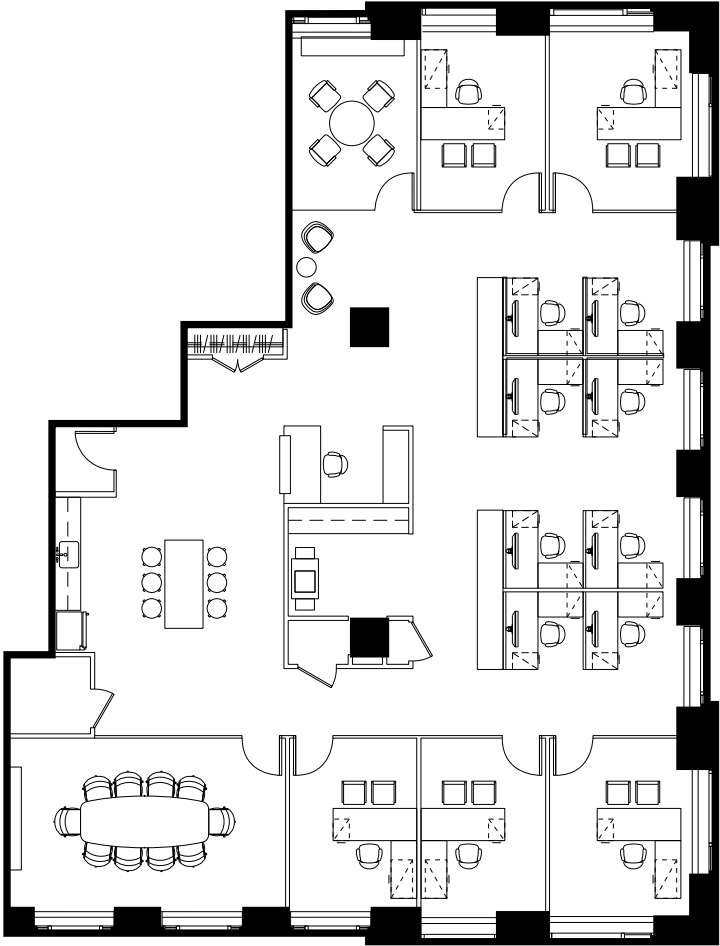
Key Plan



Partial Floor Plan
(Test Fit)

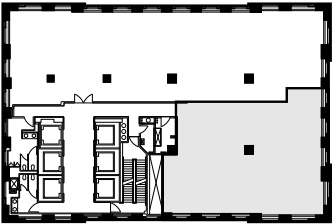
32nd
Floor

5,593 RSF



Private Offices	5	Pantry	1	Copy Area	1
Workstations	8	Enclosed Collaboration Seats	14	Storage Room	1
Reception	1	Open Collaboration Seats	2		
Conference Room	1				

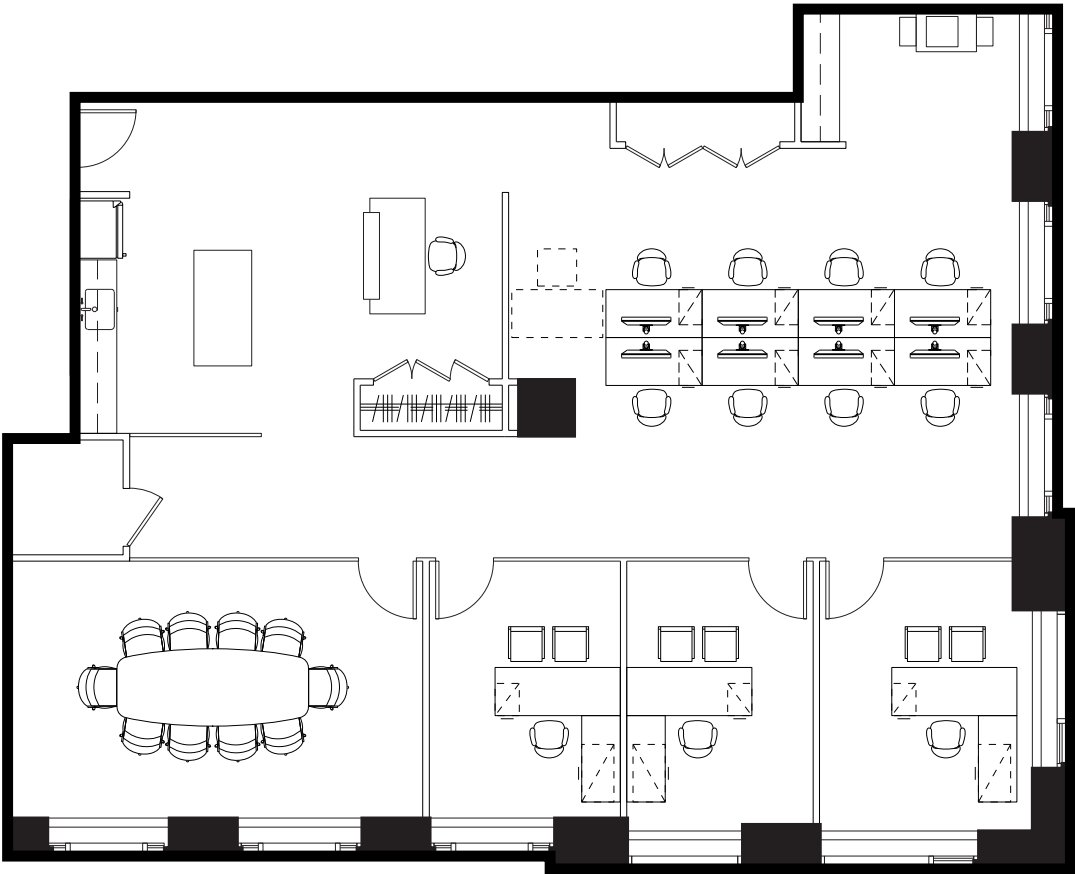
Key Plan



Partial Floor Plan
(New Prebuilt)

30th
Floor

3,797 RSF

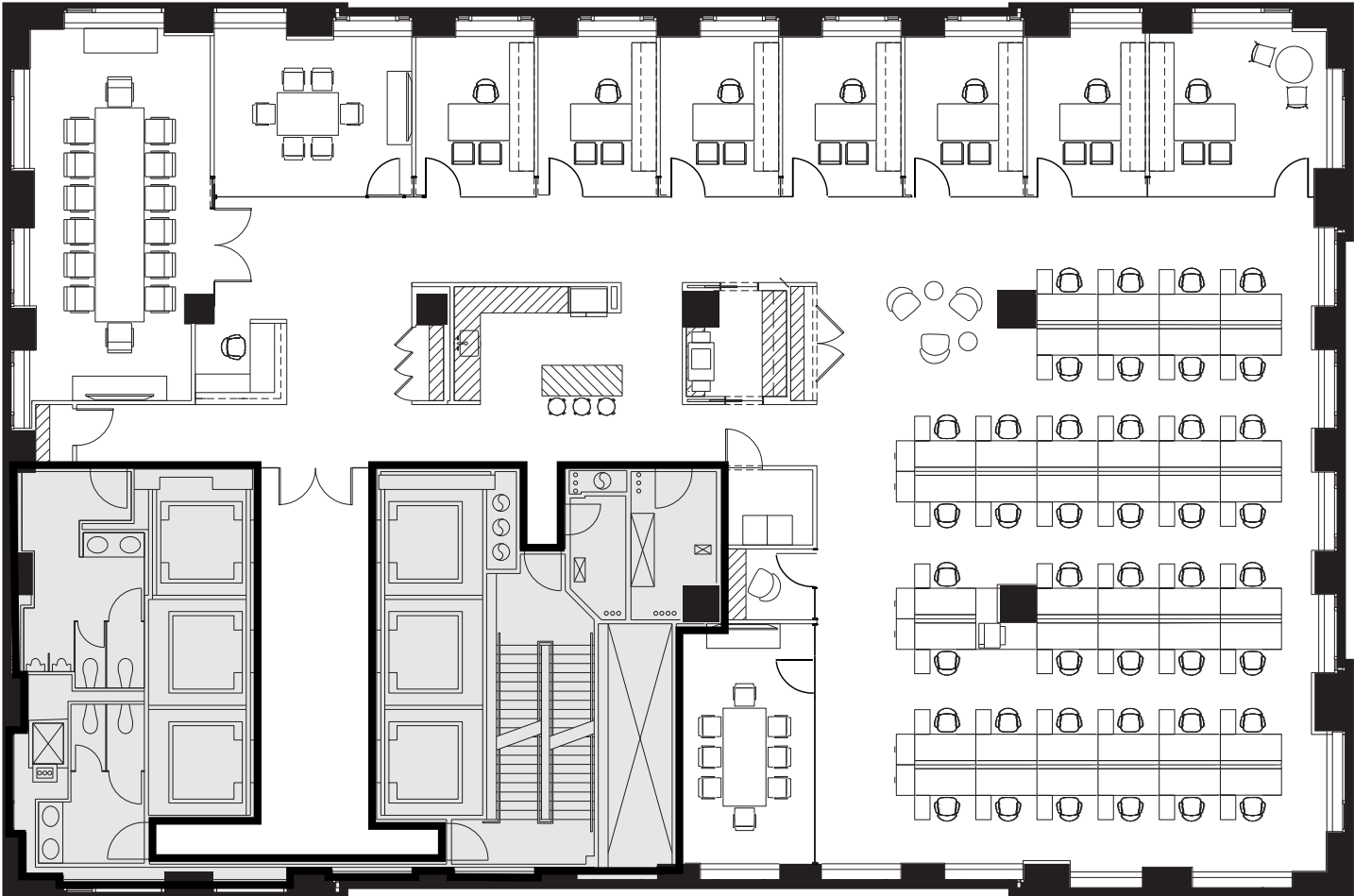


Private Offices	3	Conference Room	1
Workstations	8	Open Pantry	1
Reception	1	Copy Area	1
		Storage Room	1

Full Floor Plan
(New Prebuilt)

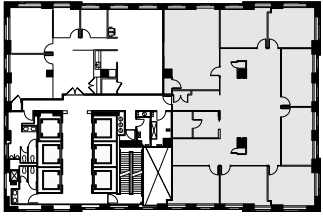
24th
Floor

9,734 RSF



Executive Office	1	Meeting Room	1
Private Offices	6	Pantry	1
Reception	1	Phone Room	1
Conference Rooms	2	Copy Room	1

Key Plan

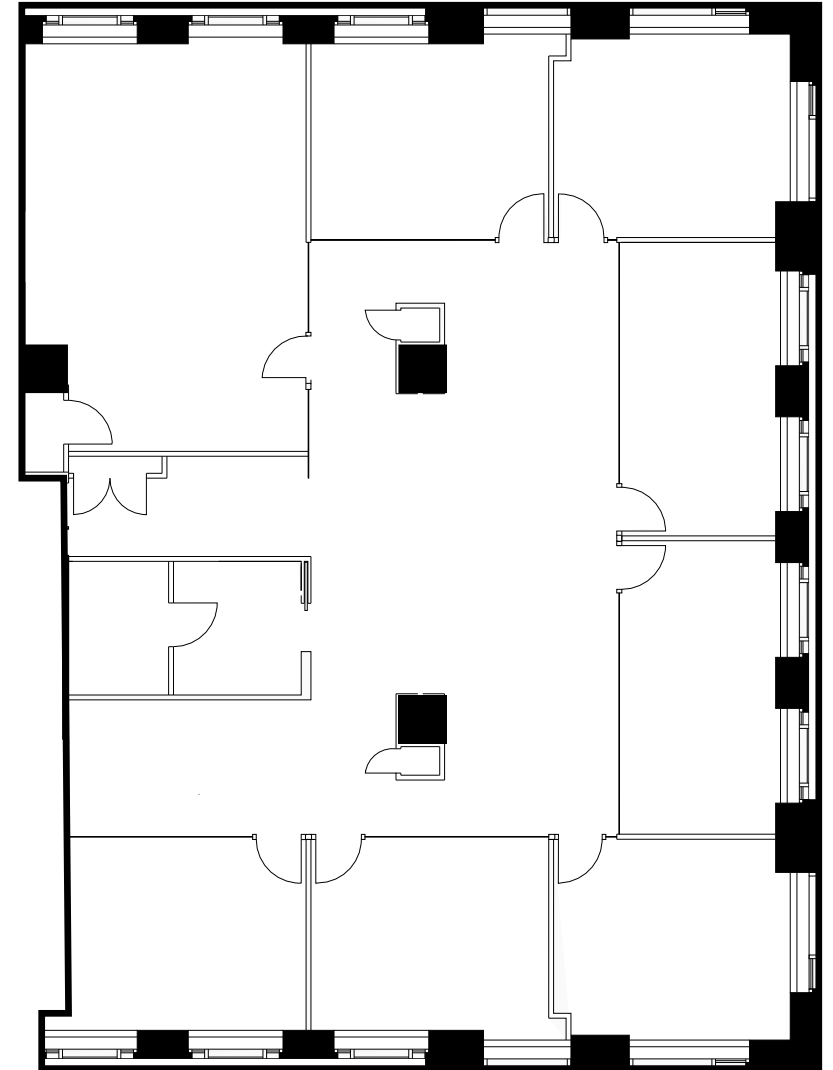


Partial Floor Plan (As Built)

Available 1/1/2025

21st Floor

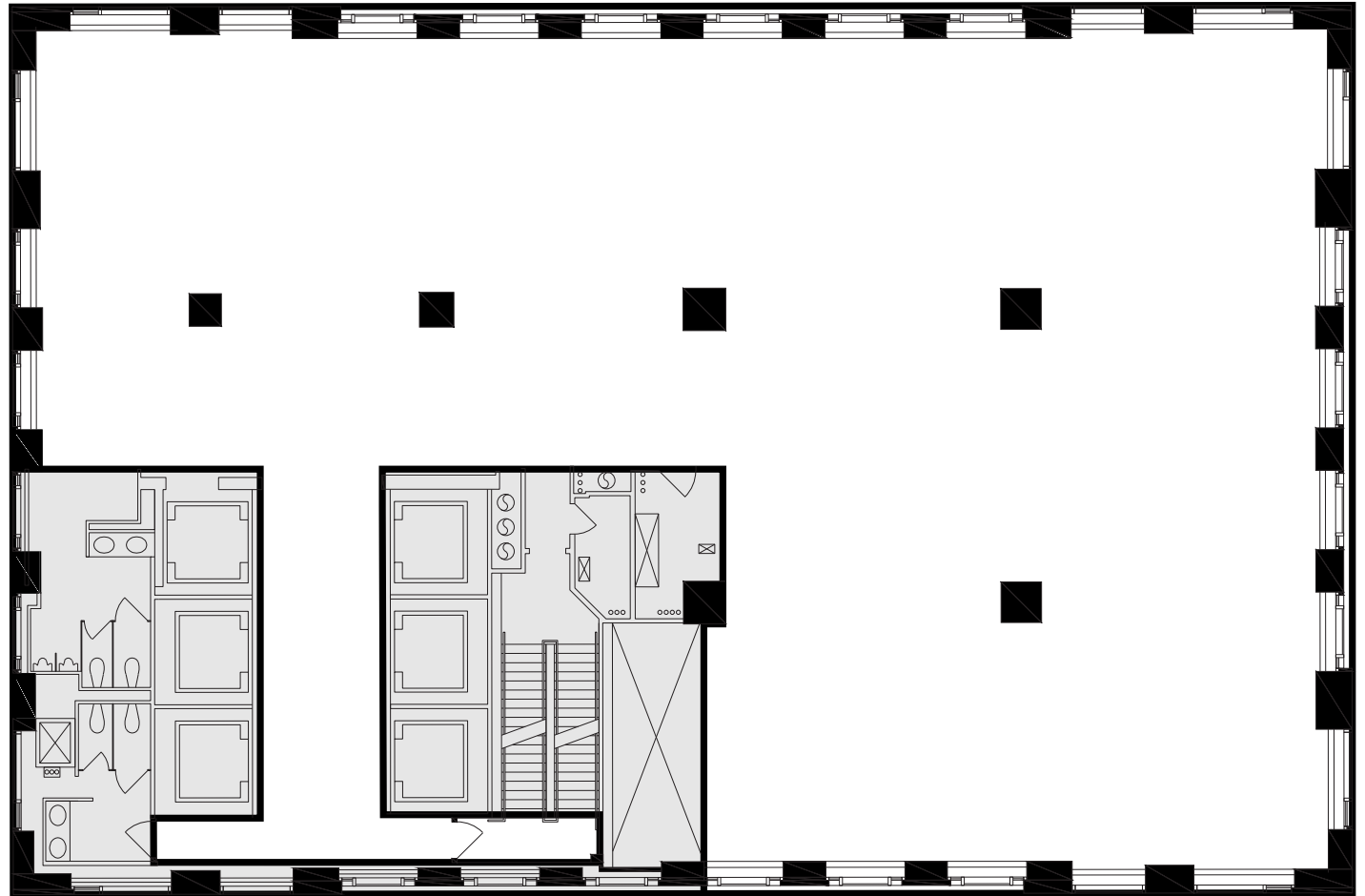
6,545 RSF

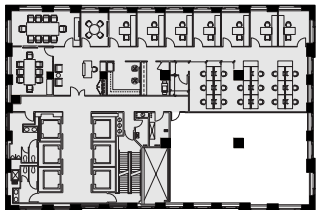


Full Floor
Core Plan

20th
Floor

9,697 RSF

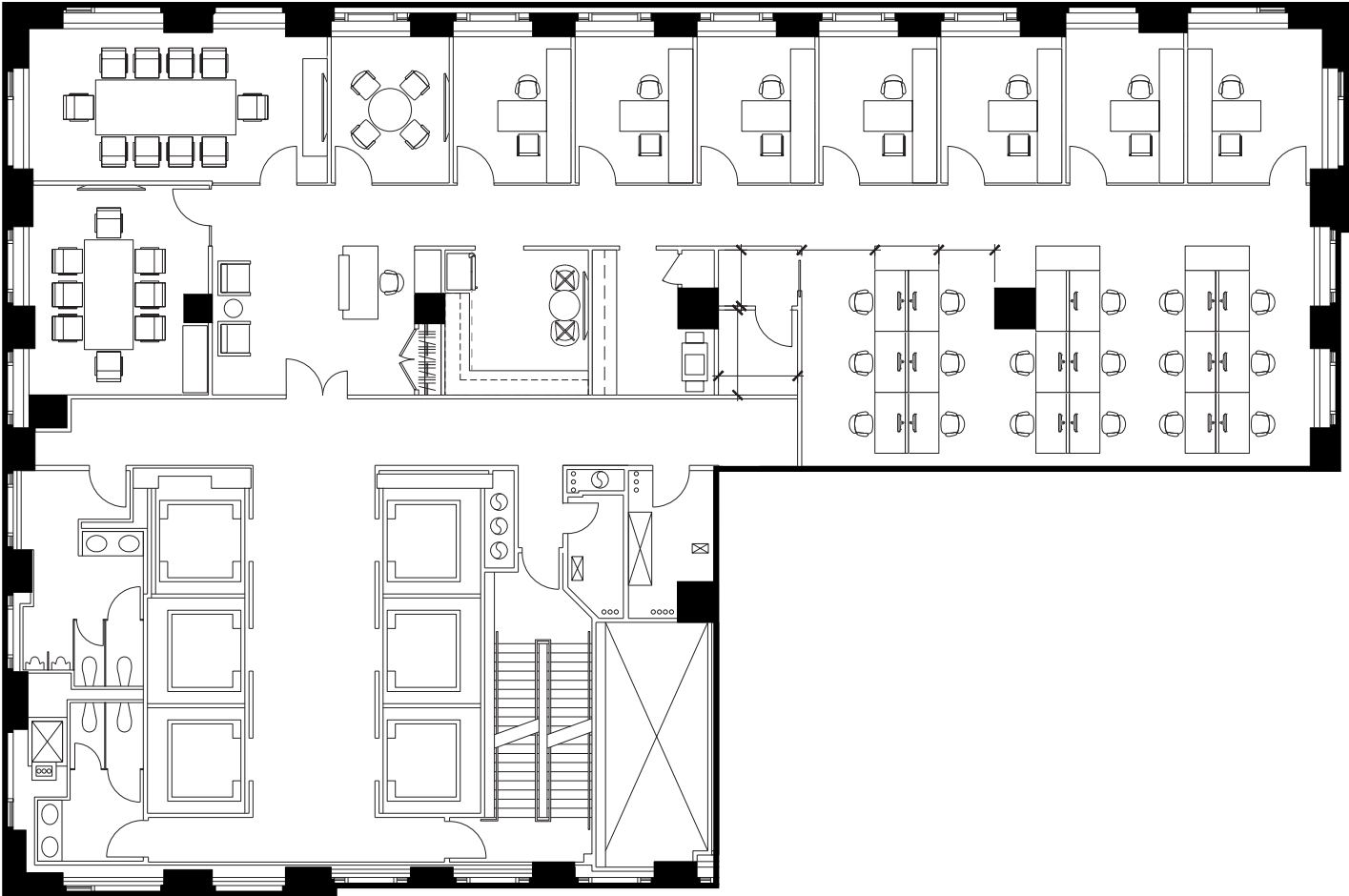




Partial Floor Plan
(Test Fit)

19th Floor

6,601 RSF



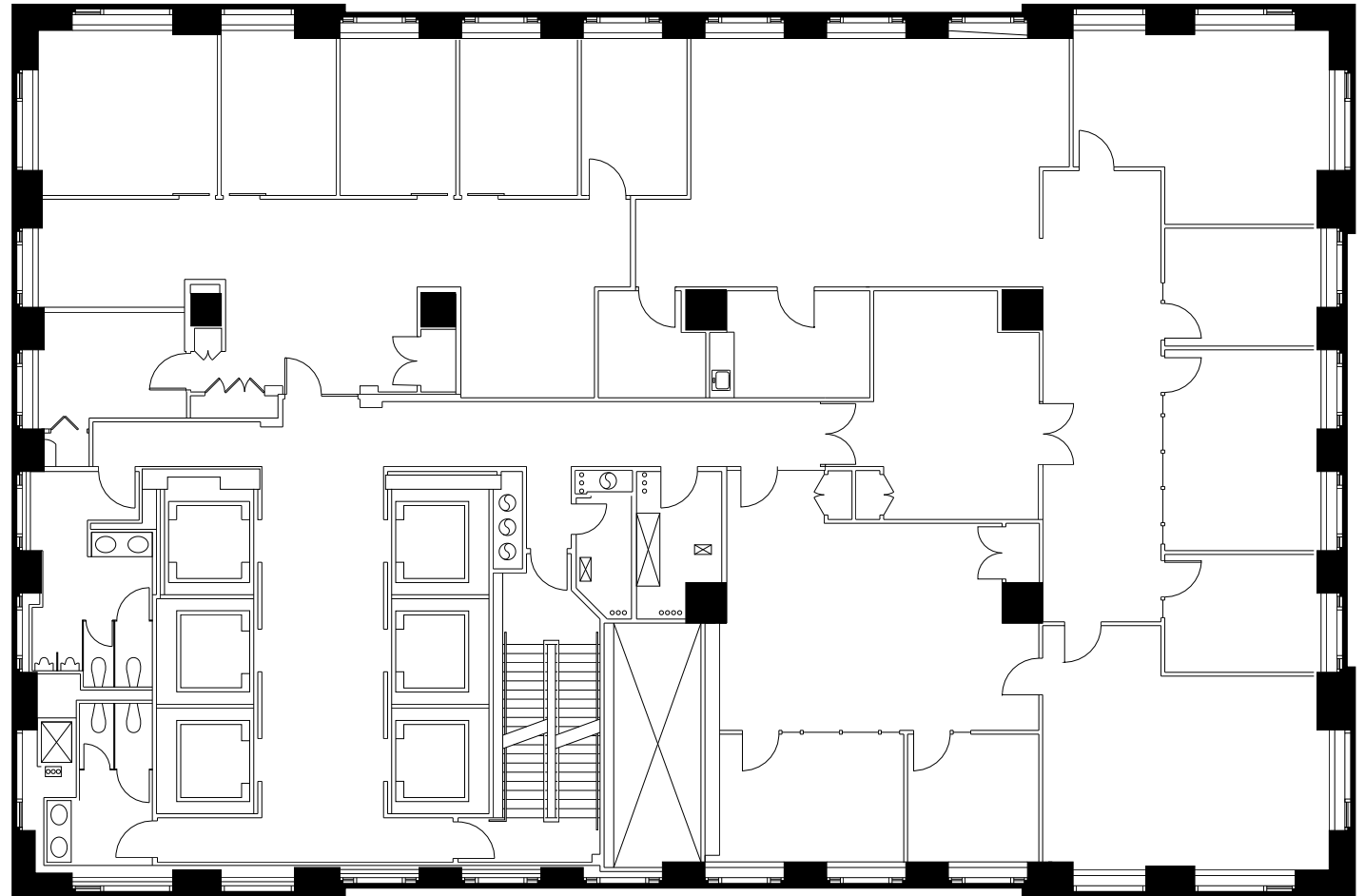
Offices	7
Workstations	17
Receptionist	1

Full Floor Plan

Available 9/1/2025

17th Floor

9,697 RSF

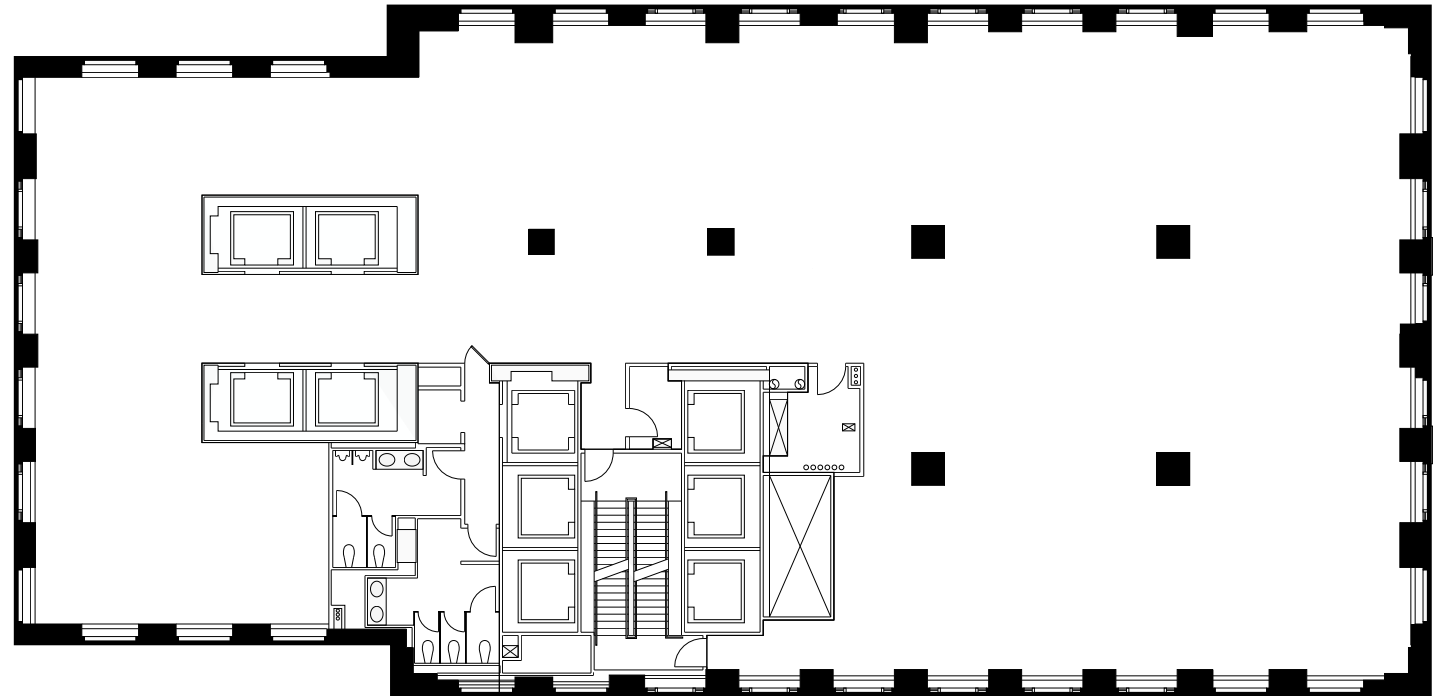


Full Floor (Core Plan)

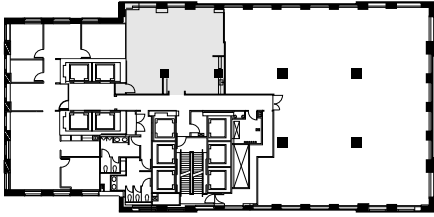
Available 1/1/2025

14th Floor

12,930 RSF



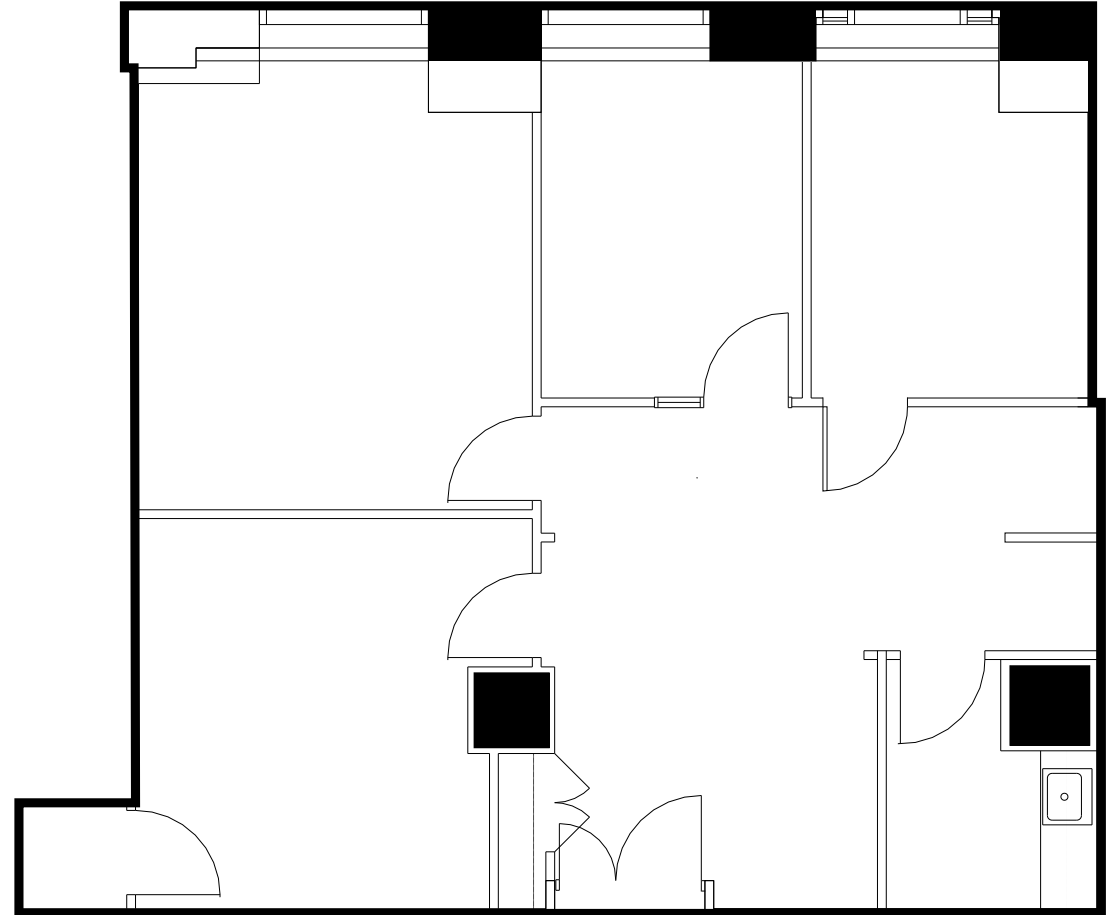
Key Plan



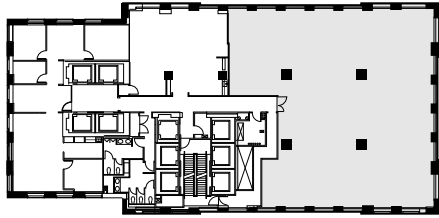
Partial Floor Plan (As Built)

8th Floor

1,889 RSF



Key Plan

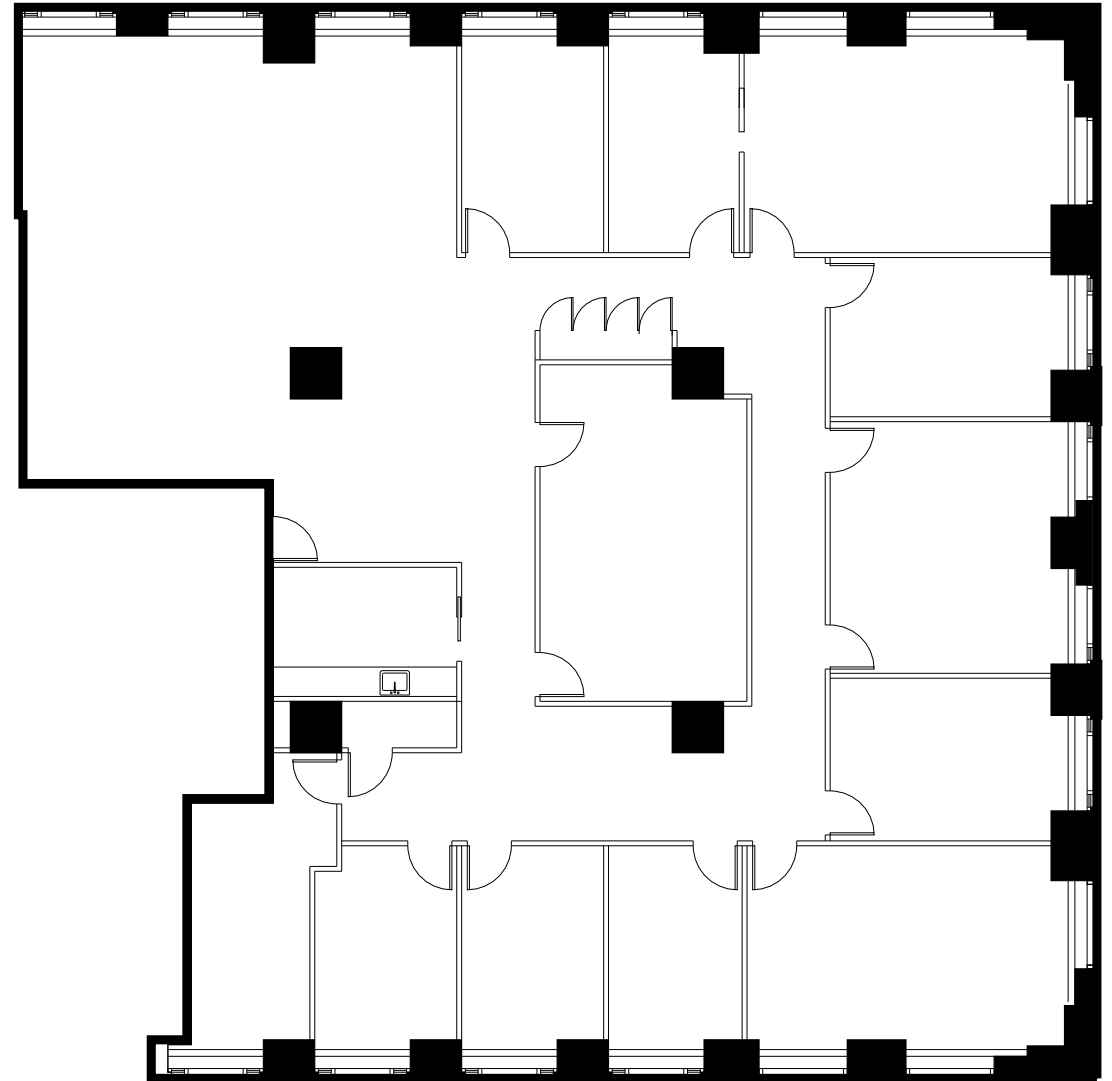


Partial Floor Plan (As Built)

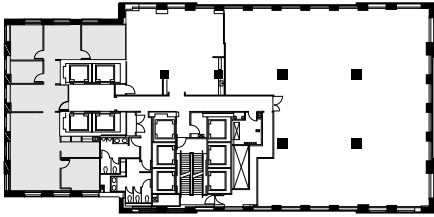
Available 6/12/2025

8th Floor

7,815 RSF



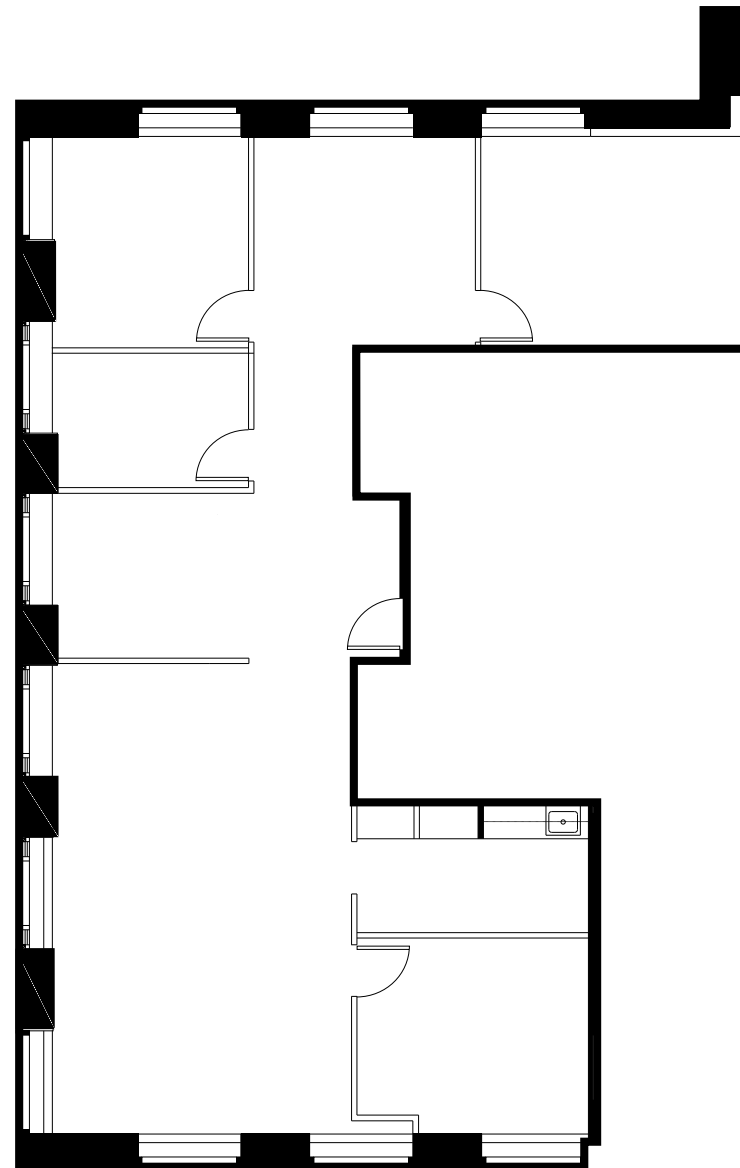
Key Plan



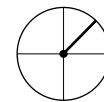
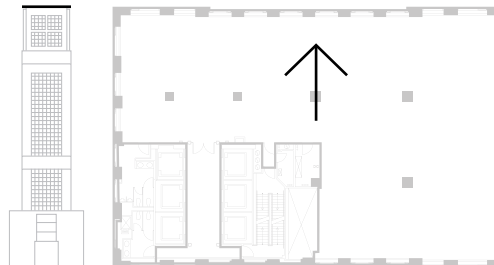
Partial Floor Plan (As Built)

8th Floor

3,205 RSF

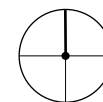
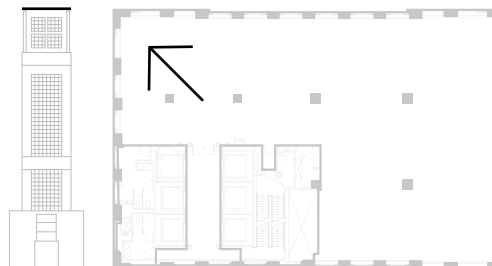


World-class Point of View.



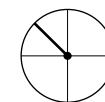
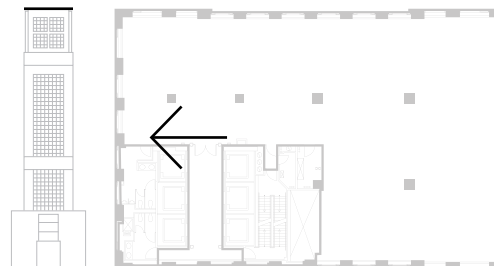
North East

Take in the stunning expanse of Central Park, cut perfectly against 5th Avenue's steadfast wall of classic architecture.



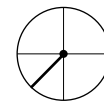
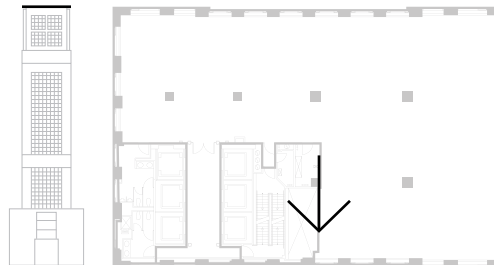
North

Contemplative scenes where the verdant meets vaulting high rises, and the reflection of the sky peers into the Hudson River.



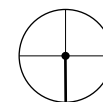
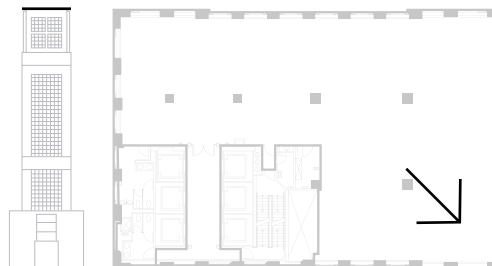
North West

At such great heights, glinting glass and steel
are success's most constant companion.



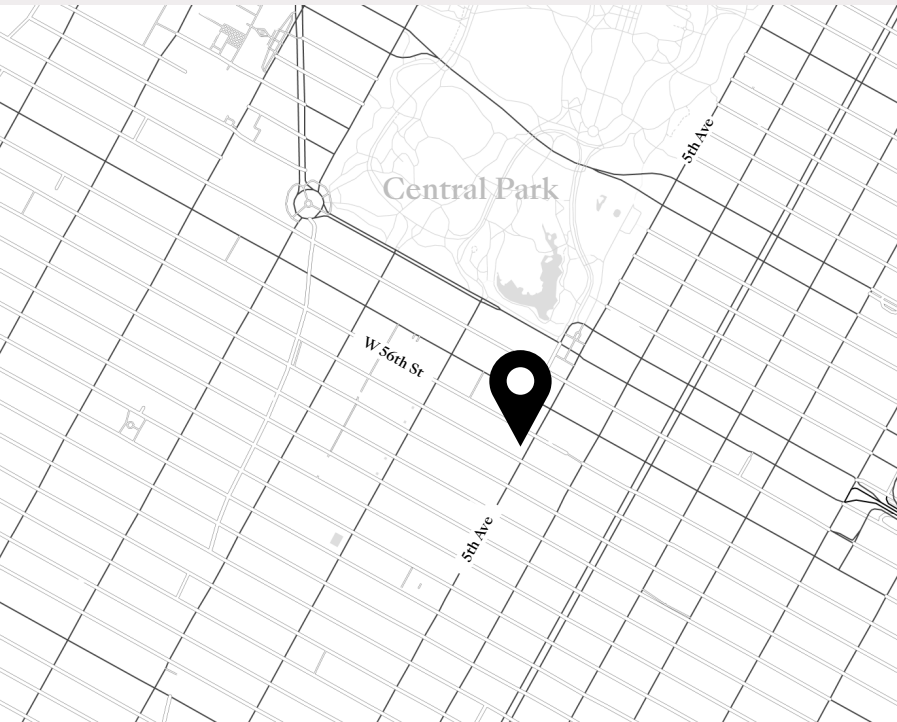
South West

Few things feel out of reach with the world's most iconic skyline at your back.



South

Landmarks as far as the eye can see, complete with hints of the East River; one of the many perks of being at the center of it all.



The World-renowned Plaza District.

An Incomparable Address

Manhattan's Plaza District is not only home to the city's most iconic buildings, it's also the largest commercial, media and entertainment center on the globe. Steeped in history and worldwide fame, everything from its shops on 5th Avenue to Central Park is quintessential New York.



Pause for reflection amid the stunningly surreal heartbeat of the city.



Fifth Avenue, home to over a century of the world's best beloved fashion.

Leisure, Illuminated.

Culture & Shopping

Peruse the shops of 5th Avenue, where the world's most famed fashion has made its home for over a century. Take in one of the 250 performances annually at Carnegie Hall, showcasing music – classical and current – since 1891. Visit the Al Hirschfield Theater for a Broadway musical, or spark inspiration at the Museum of Modern Art. It's all here, constantly evolving, reinventing itself for the next generation to come – and it's all at the doorstep of 712 5th Avenue.



A mecca for music, classical and new, for over 125 years.



The Museum of Modern Art, hosting nearly 3,000,000 visitors each year.



Meetings and more at a red-carpeted symbol of New York luxury.

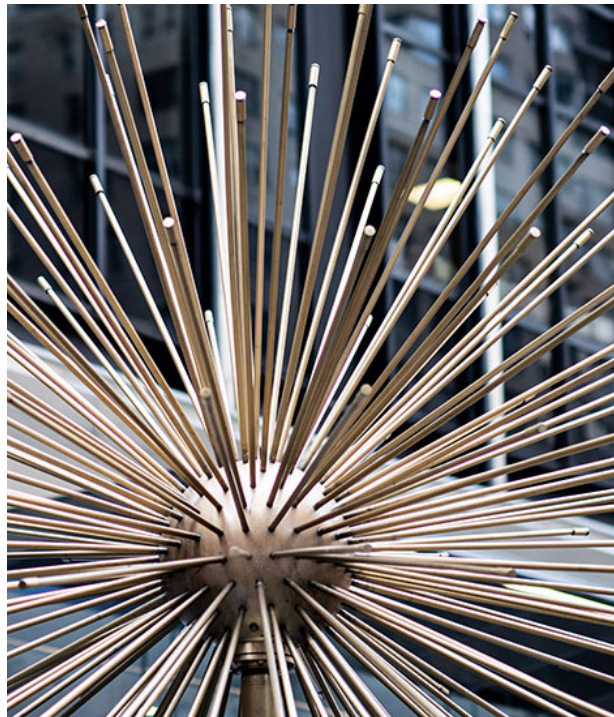


The Plaza District, an exceptional place to call home.

The Luxury of Connection.

Convenience & Access

Steps from Central Park and extraordinarily connected to public transit, 712 5th Avenue's location is its luxury. And once there, a vibrant neighborhood can be found at one's fingertips. Follow in Ernest Hemingway's footsteps with a dry martini at Club 21, or meet friends at the red-carpeted St. Regis. Past and present collide at every turn, whether it's inside the Apple Store's glass cube or on the tennis courts of the historic University Club.



Eclectic energy resonates throughout the world's largest business district.



Deals happen fireside at the Polo Bar.



The Plaza Hotel, a plush meeting spot since 1907.



Steeped in history. Seeking what's next.

Storied & Spectacular.

Iconic Plaza District

Whether it's a morning run over the serene Gapstow Bridge in the park or meeting clients at the landmark Plaza Hotel, every moment spent in this notable neighborhood feels imbued with sublime New York cache – because it is. Time and intrigue have lent an undeniably captivating quality to every Midtown icon within reach, from the Pulitzer Fountain to Columbus Circle and beyond.



The Museum of Natural History as seen from Cherry Fountain.



The Bethesda Terrace Fountain, featuring the Angel of the Waters.



Master Midtown.

Culture & Shopping

- | | |
|-------------------------|---------------------|
| 1 Al Hirschfeld Theatre | 5 Bloomingdale's |
| 2 Carnegie Hall | 6 Bergdorf Goodman |
| 3 MoMA | 7 Saks Fifth Avenue |
| 4 Chanel | 8 Tiffany & Co |

Convenience & Access

- | | |
|--------------------------|------------------------|
| 9 The St. Regis New York | 13 Equinox Rockefeller |
| 10 21 Club | 14 Apple Fifth Avenue |
| 11 The Polo Bar | 15 One 57 |
| 12 University Club | 16 53 West 53 |

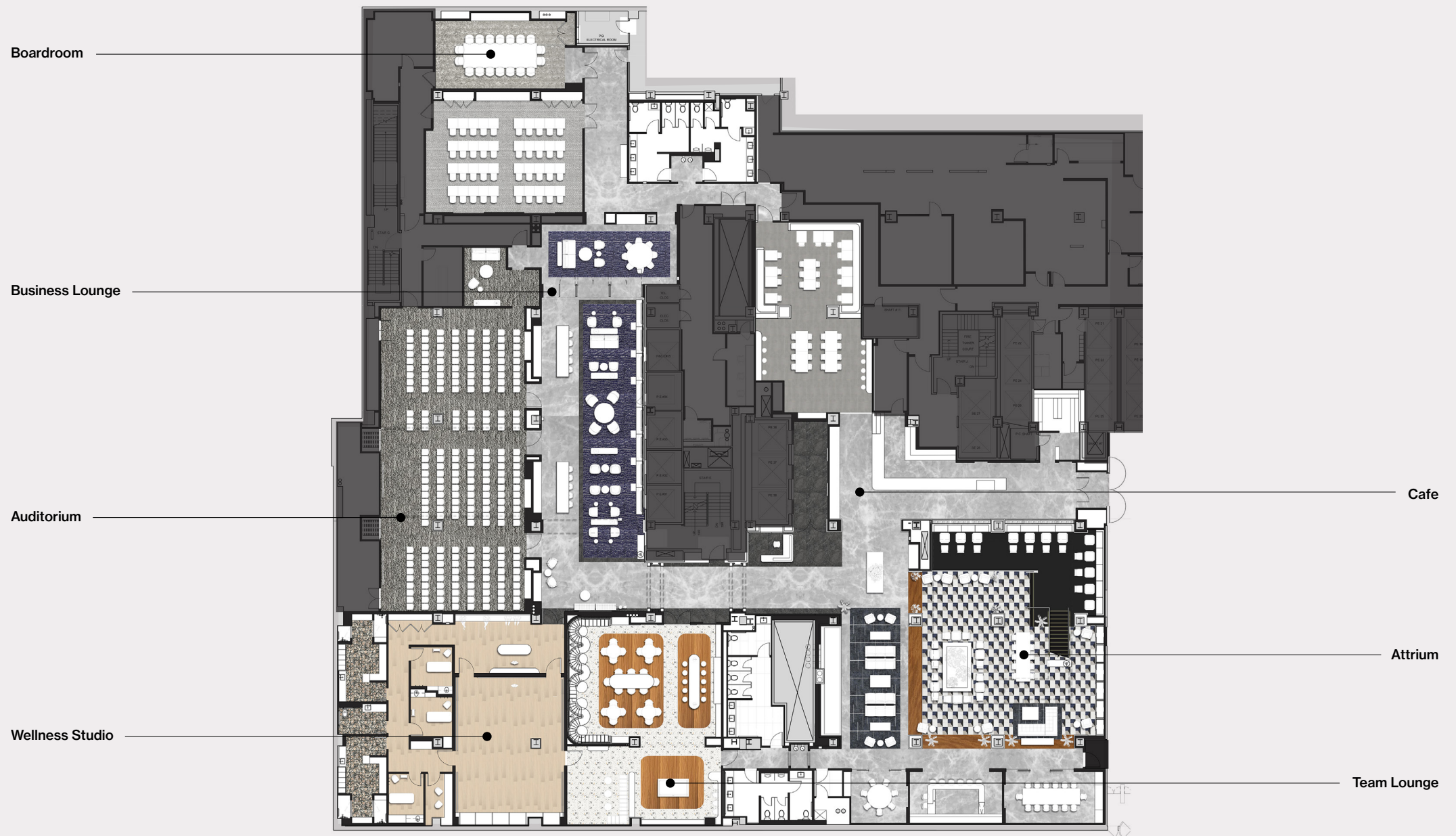
Storied & Spectacular

- | | |
|-------------------------|------------------------------|
| 17 Gapstow Bridge | 21 Tecumseh Statue |
| 18 Belvedere Castle | 22 Pulitzer Fountain |
| 19 Cherry Hill Fountain | 23 Columbus Circle |
| 20 The Plaza | 24 Museum of Natural History |

Paramount Amenity Center

The new large-scale conference and amenity center at 1301 Avenue of the Americas is available exclusively to tenants within Paramount's New York portfolio.

Concourse Level Amenity Space





Street Level Entrance to Amenity Center

1301 Avenue of the Americas



Concourse Level Atrium

1301 Avenue of the Americas



In-Building Cafe

1301 Avenue of the Americas



Team Lounge

1301 Avenue of the Americas



Boardroom

1301 Avenue of the Americas



Business Lounge

1301 Avenue of the Americas



Wellness Studio

1301 Avenue of the Americas



Auditorium

1301 Avenue of the Americas

Fortune
Favors
the Bold.

Leasing Information

Peter Brindley
Executive Vice President, Head of Real Estate
212 237 3156
pbrindley@pgre.com

Douglas Neye
Senior Vice President
212 237 2976
dneye@pgre.com

Sean Kirk
Vice President
212 237 3168
skirk@pgre.com

Paramount Group, Inc.

Paramount Group, Inc. is a real estate investment and management firm with in-house expertise in asset management, property management, leasing, acquisition, repositioning, redevelopment and financing. Established in 1978 by Werner Otto, Paramount is one of the largest publicly-owned real estate companies headquartered in New York City. Over several decades and numerous market cycles, Paramount has provided first class properties, services and amenities to its tenants. Albert Behler, President and CEO, has led Paramount since 1991 and, along with a seasoned, committed and proven management team, has assembled the company's current 13.9 million-square-foot portfolio of high quality, Class A office building investments, a retail property, as well as debt and equity investments in New York and San Francisco.

Seven Twelve Fifth Avenue

SevenTwelveFifth.com