

Fifth Avenue's Most Private Address

Seven  
Twelve  
Fifth  
Avenue

Uncover  
a New  
Era of  
Midtown  
Mastery

# Fifth Avenue's Most Private Address.

---

## **Rediscover a Plaza District Classic.**

**Powerful and grandly intimate, the timeless building at 712 5<sup>th</sup> Avenue is a monument to ambition with quintessential Central Park views. Each boutique floorplate of this premium commercial offering comprises approximately 9,800 RSF for Tower Floors (Floor 17-52) and 13,000 RSF for Base Floors (Floor 6-14) with partial to full floors available. Original architects Kohn Pederson Fox recently completed stunning upgrades and a bold lobby renovation, inspiring a new era of excellence in the Plaza District.**

---

# A Pillar of Midtown Prestige.

## An Iconic Address

Enjoy the luxury of true focus, elevated above New York City's most iconic avenue. Private, prestigious and undeniably premium; every moment here raises the everyday into the extraordinary.

---





# The Business of Bold Perspectives.

## **Be Untouchable**

Surrounded on all sides by New York City's most iconic buildings and imbued with the energy of the streets below, every workspace provides undeniable presence and understated style.

# Where Purpose Meets Point of View.

## Seize a New Perspective

Here, presiding over Midtown, an address to truly impress. Endless city views meet moments of reflection, celebration and determination, while a coveted Central Park backdrop inspires what's next.

---





## A Grand Arrival for Grander Pursuits.

**A Fifth Avenue Transformation**  
The lobby is evolved for a new generation  
by original architects Kohn Pedersen Fox,  
featuring a curved acrylic entrance and  
marble reception.

Powerfully  
Intimate  
Floor Plans.

---



All units are available immediately unless dated below.

Floor Availability

46				9,866 RSF
45	Available 9/30/2025	3,160 RSF	4,315 RSF	2,306 RSF
44	Available 9/30/2025			9,724 RSF
43	Available 9/30/2025			9,724 RSF
42	Available 9/30/2025			9,777 RSF
41	Available 9/30/2025			6,515 RSF
38				7,102 RSF
34				9,804 RSF
30				3,797 RSF
24				9,734 RSF
21				6,545 RSF
20				9,697 RSF
19				6,601 RSF
17	Available 9/1/2025			9,697 RSF
14				12,930 RSF
10	Available 6/21/2025			12,930 RSF
8	Available 6/12/2025	7,815 RSF	1,889 RSF	3,205 RSF

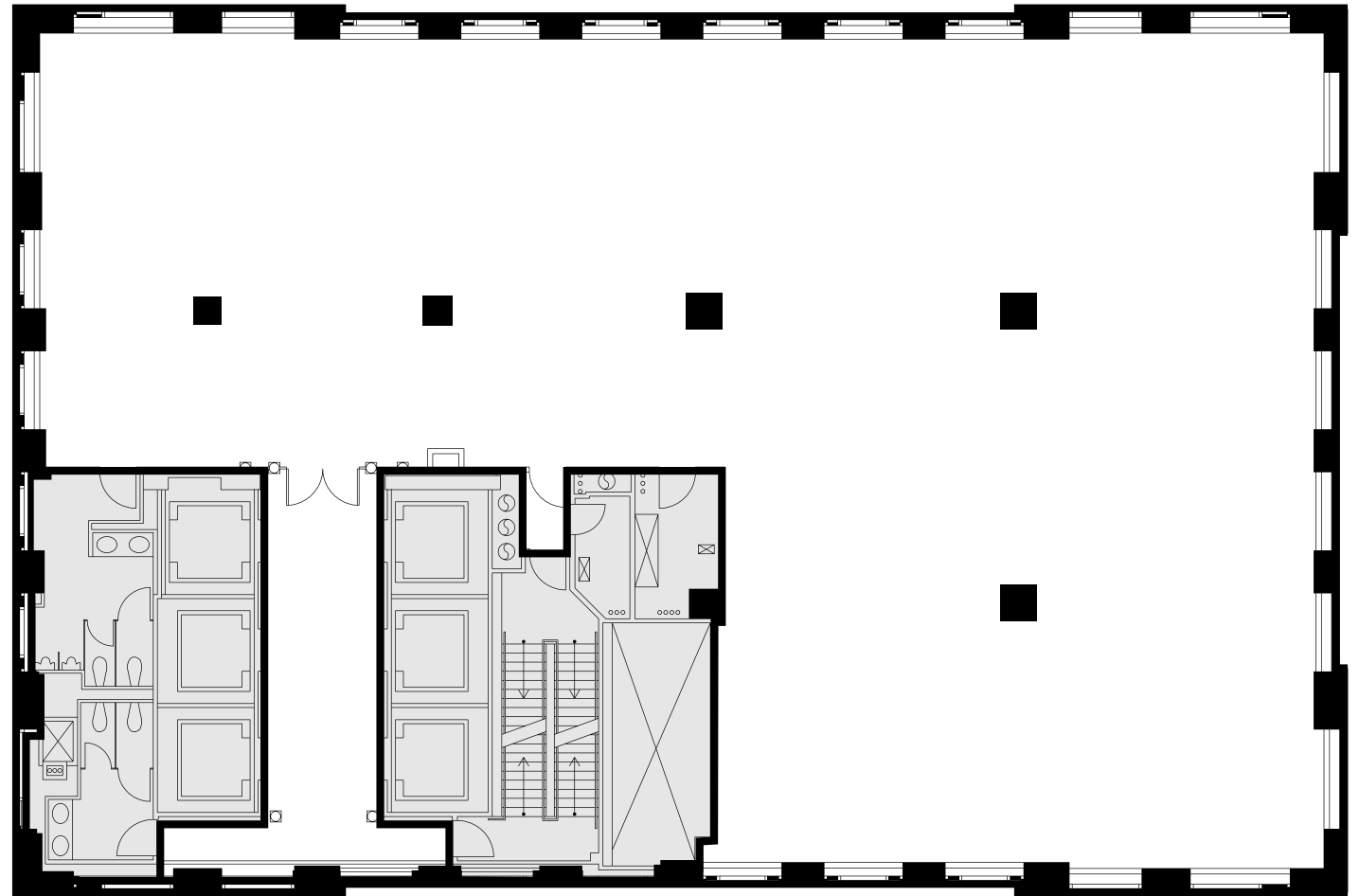
# The Space for Success.

## Approximately 9,800 RSF per Tower Floor (Floor 17-52)

Set serenely high above 5th Avenue, the newly renovated workspaces of 712 5<sup>th</sup> Avenue offer complete customization—with partial to full floors available for lease, grand windows and six high-speed elevators. The building itself is certified LEED Gold, with a striking lobby renovation completed by original architects Kohn Pedersen Fox. Just beyond the lobby’s uniquely curved acrylic entrance, music played on a distinctive Poul Henningsen designed piano invites tenants and guests daily.

Representative  
Full Floor Plan

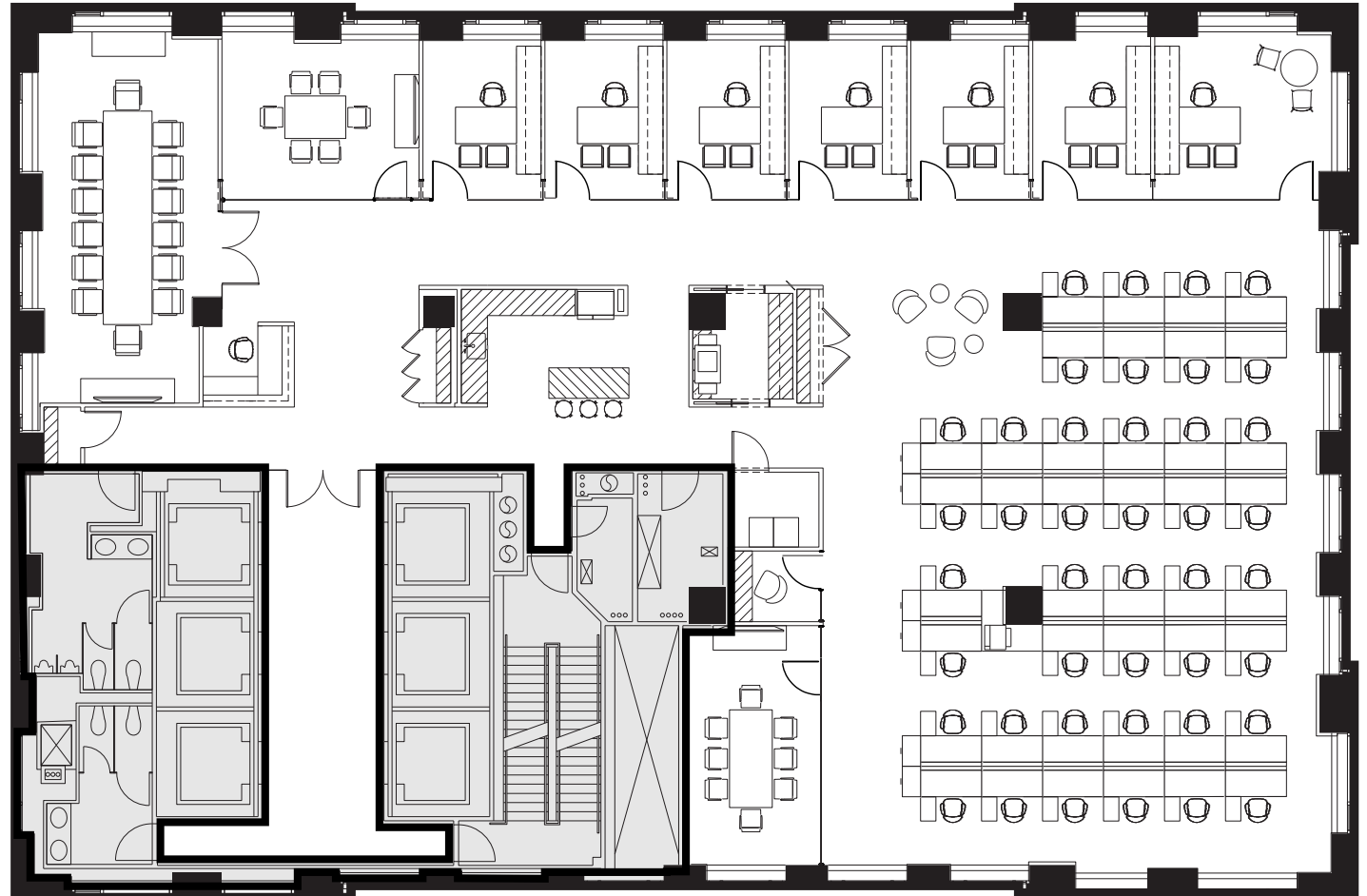
Full Floor  
Core Plan



+/-9,800 RSF

---

## Representative Full Floor Plan

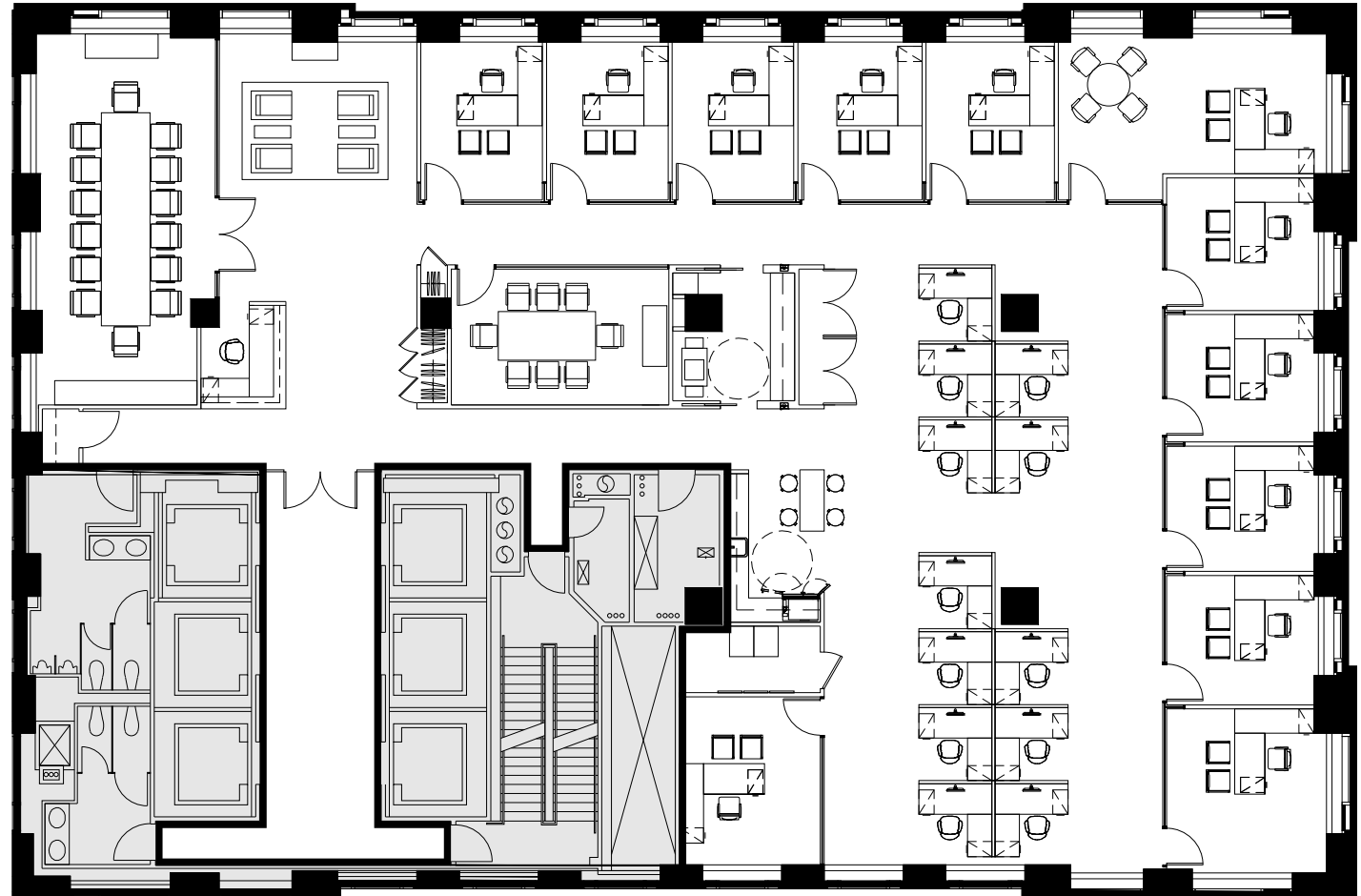


# Open Plan

+/- 9,800 RSF

Executive Office	1	Meeting Room	1
Private Offices	6	Pantry	1
Reception	1	Phone Room	1
Conference Rooms	2	Copy Room	1

## Representative Full Floor Plan



# Office Plan

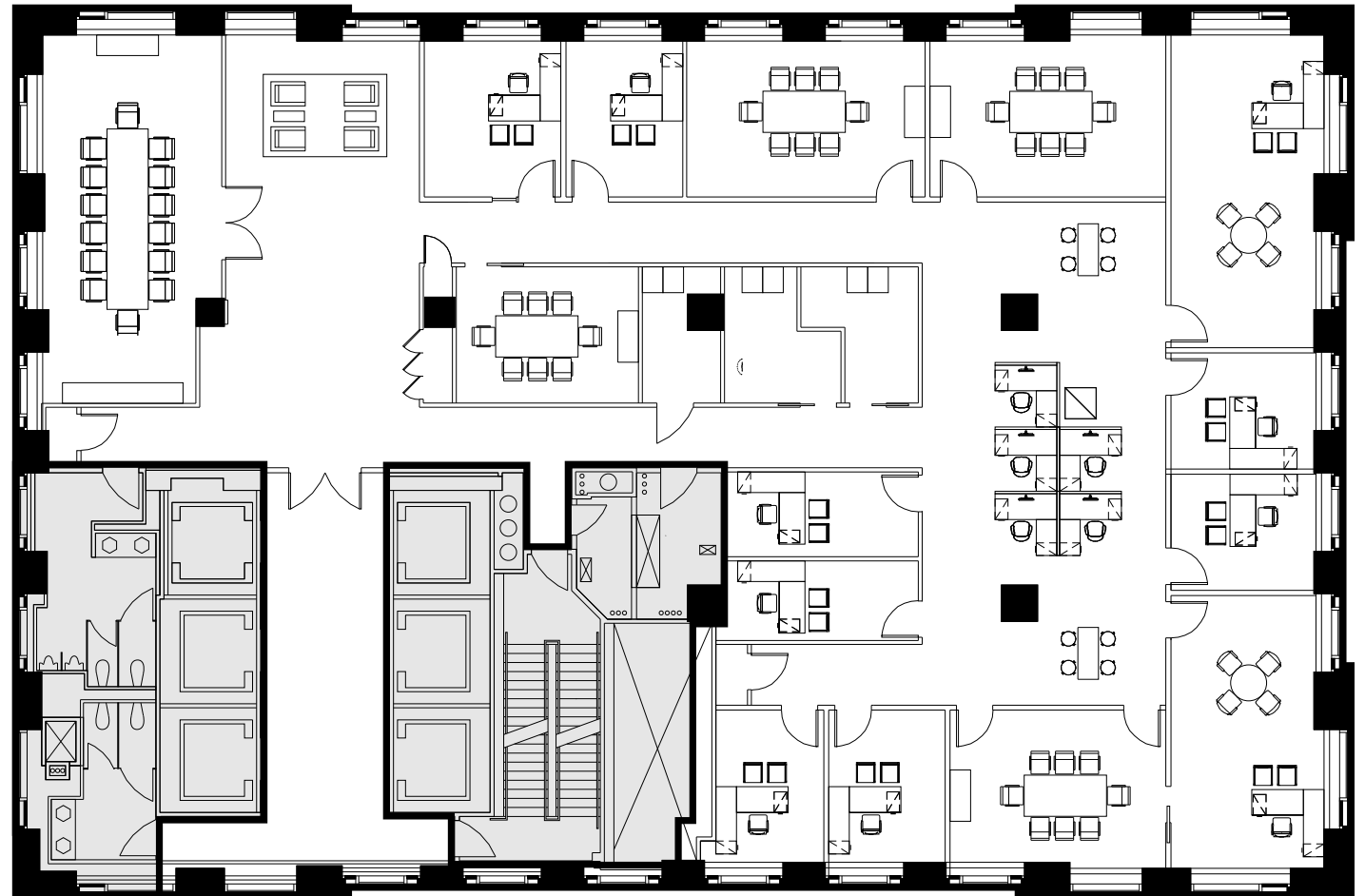
+/- 9,800 RSF

Executive Office	1
Private Offices	11
Workstations	12
Reception	1

Board Room	1
Conference Room	1
Cafe	1
IT Room	1

Open Pantry	1
Copy Area	1
Coat Closets	3

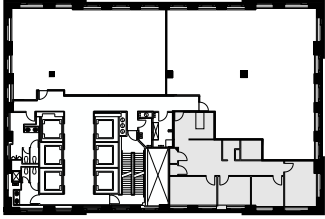
Full Floor Plan  
Existing Conditions



46th  
Floor

9,866 RSF

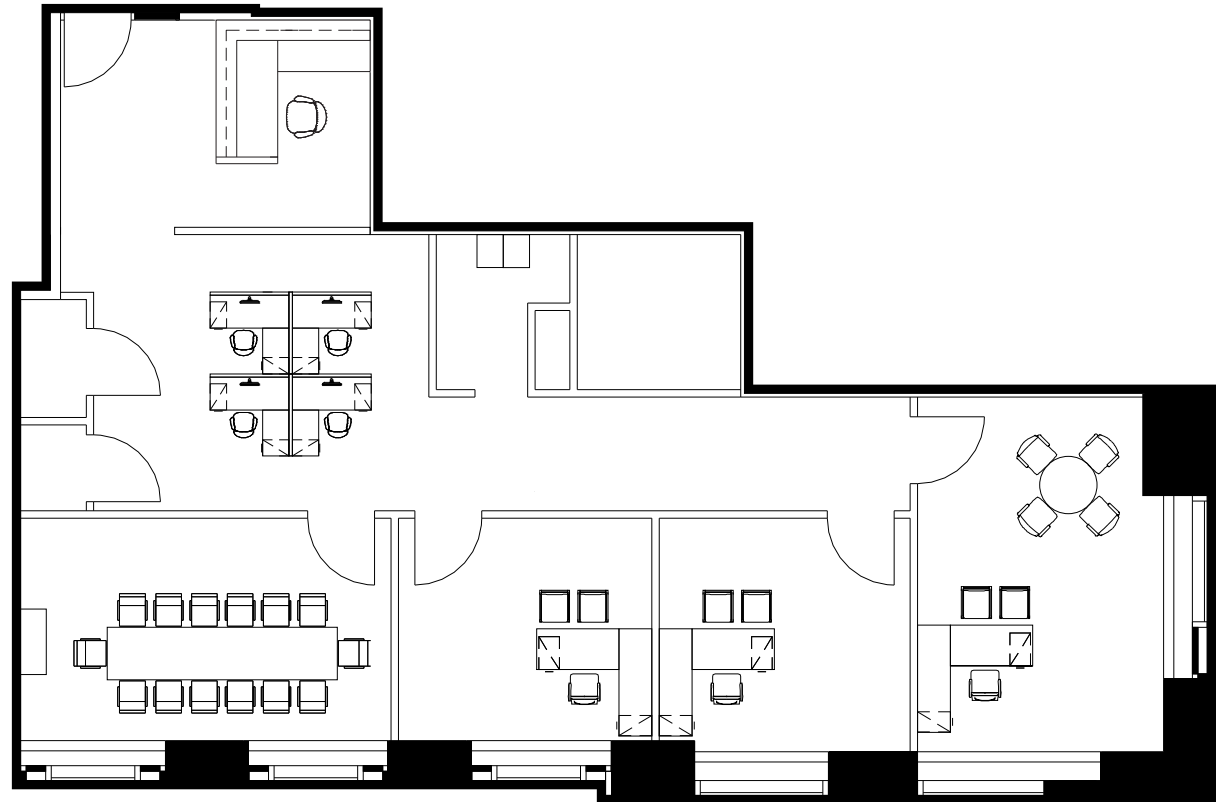
Key Plan



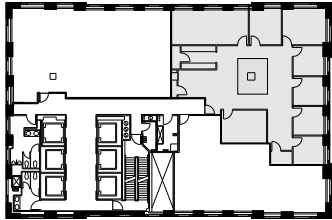
## Partial Floor Plan (As Built)

# 45th Floor

2,306 RSF



Key Plan

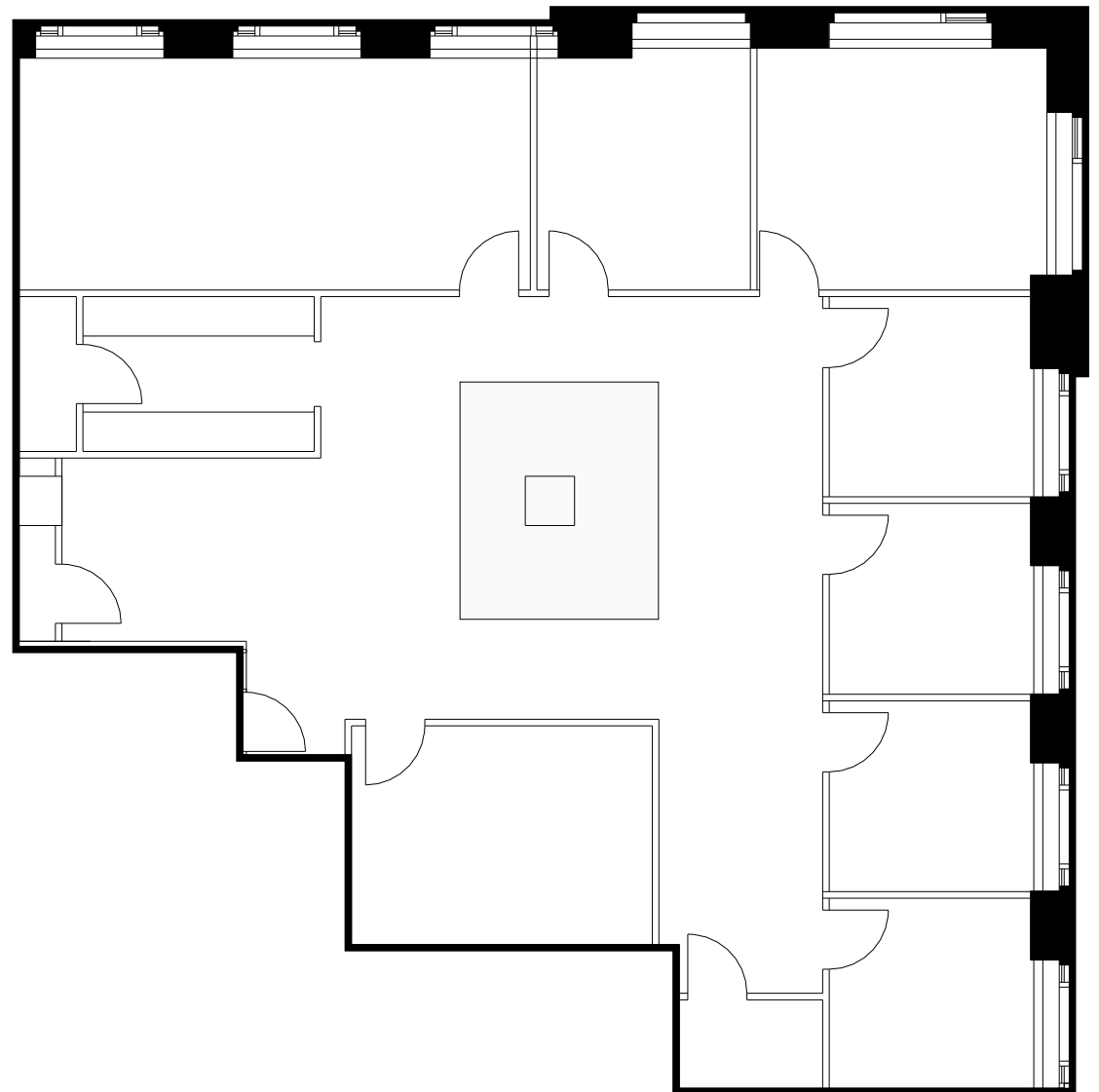


## Partial Floor Plan (As Built)

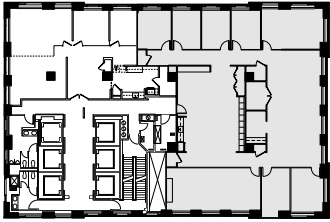
Available 12/1/2024

# 45th Floor

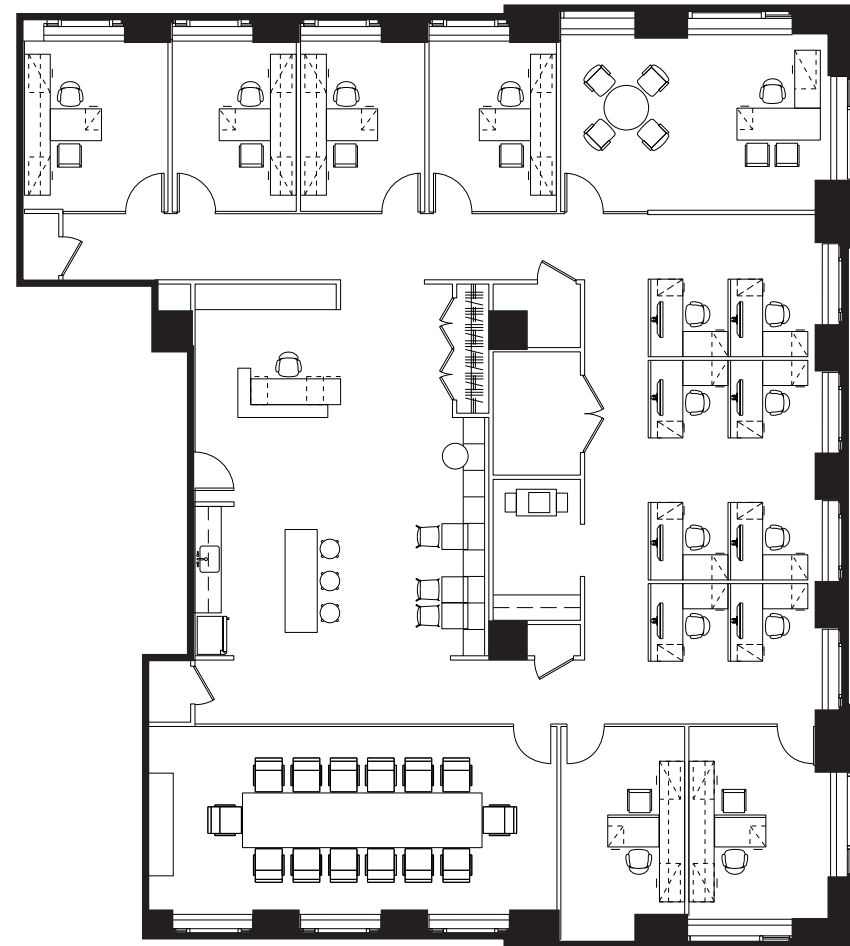
4,315 RSF



Key Plan



Partial Floor Plan  
(Test Fit)



38th  
Floor

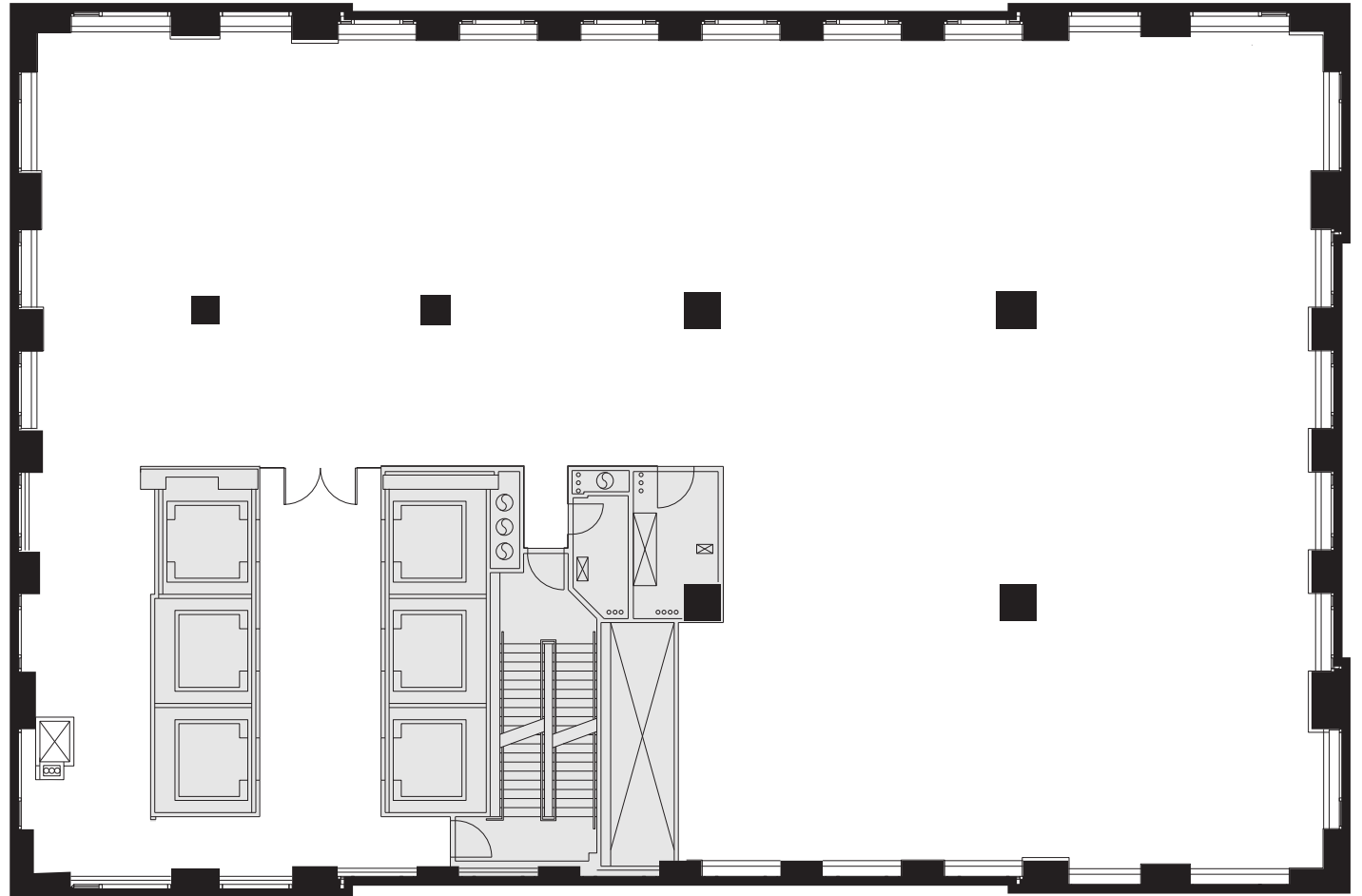
7,102 RSF

Executive Office	1	Conference Room	1	Copy Area	1
Private Offices	6	Pantry	1	Storage Room	4
Workstations	8	Enclosed Collaboration Seats	14	Computer Room	1
Reception	1	Open Collaboration Seats	9		



Full Floor  
Core Plan

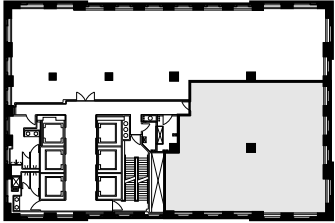
34th  
Floor



9804 RSF

---

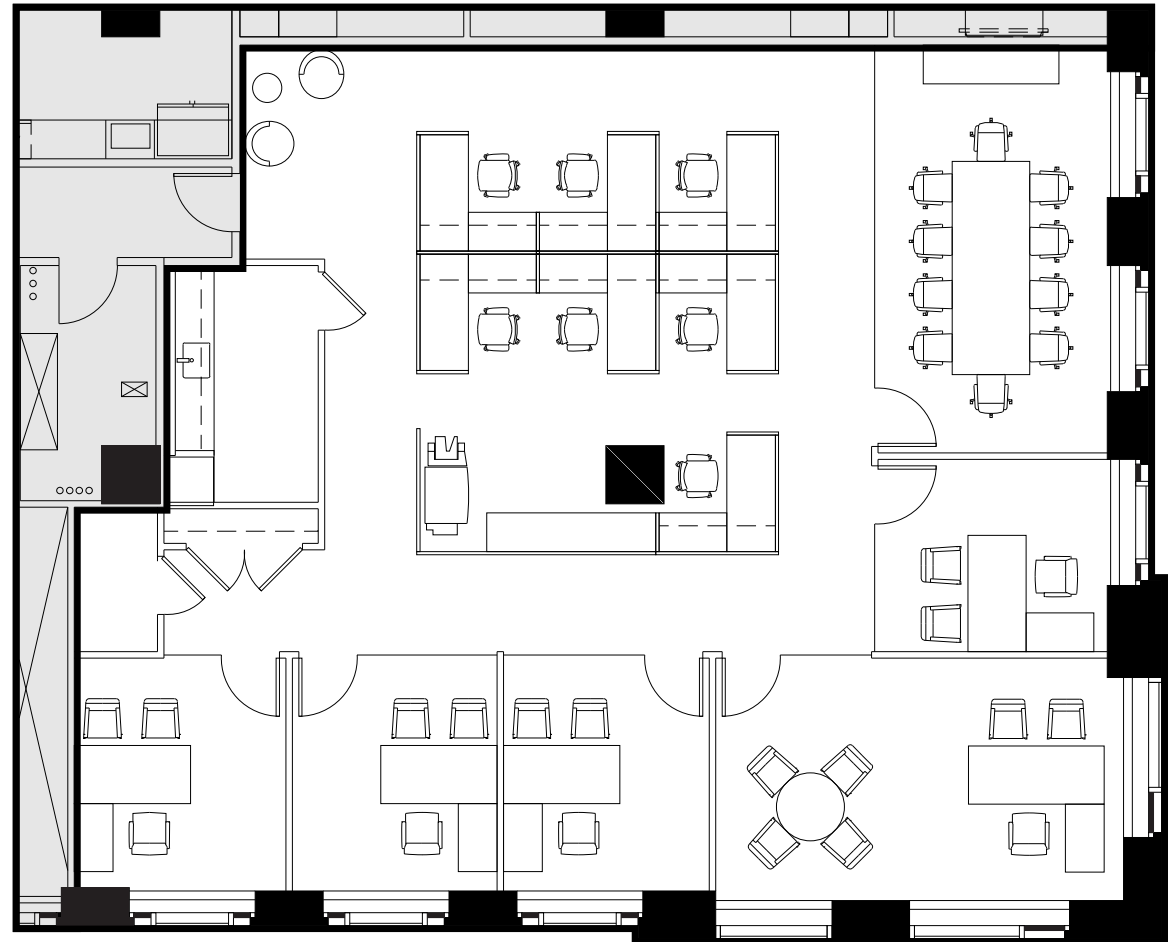
Key Plan



## Partial Floor Plan (New Prebuilt)

# 33rd Floor

4,133 RSF

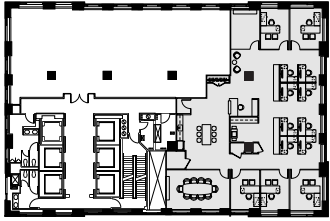


Executive Office	1
Private Offices	4
Workstations	7

Conference Room	1
IT Room	1
Open Pantry	1

Copy Area	1
Storage Room	1

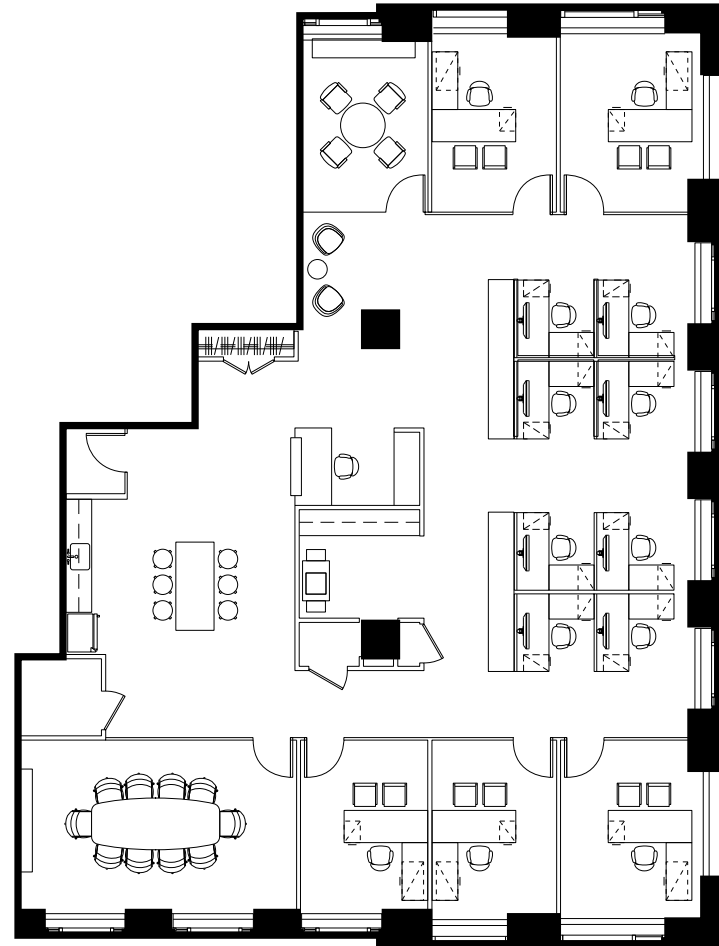
Key Plan



## Partial Floor Plan (Test Fit)

# 32nd Floor

5,593 RSF

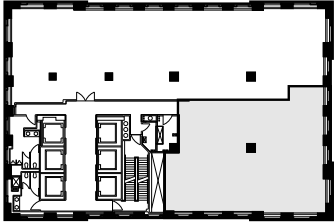


Private Offices	5
Workstations	8
Reception	1
Conference Room	1

Pantry	1
Enclosed Collaboration Seats	14
Open Collaboration Seats	2

Copy Area	1
Storage Room	1

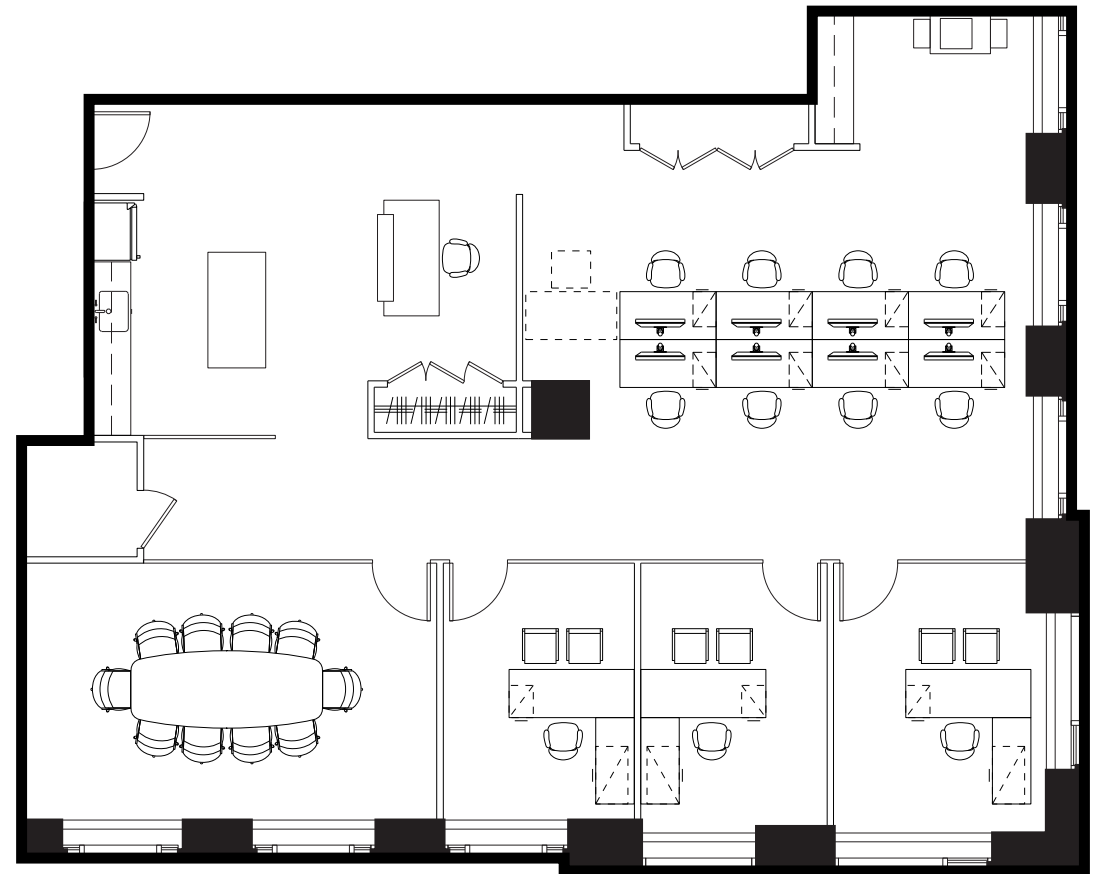
Key Plan



## Partial Floor Plan (New Prebuilt)

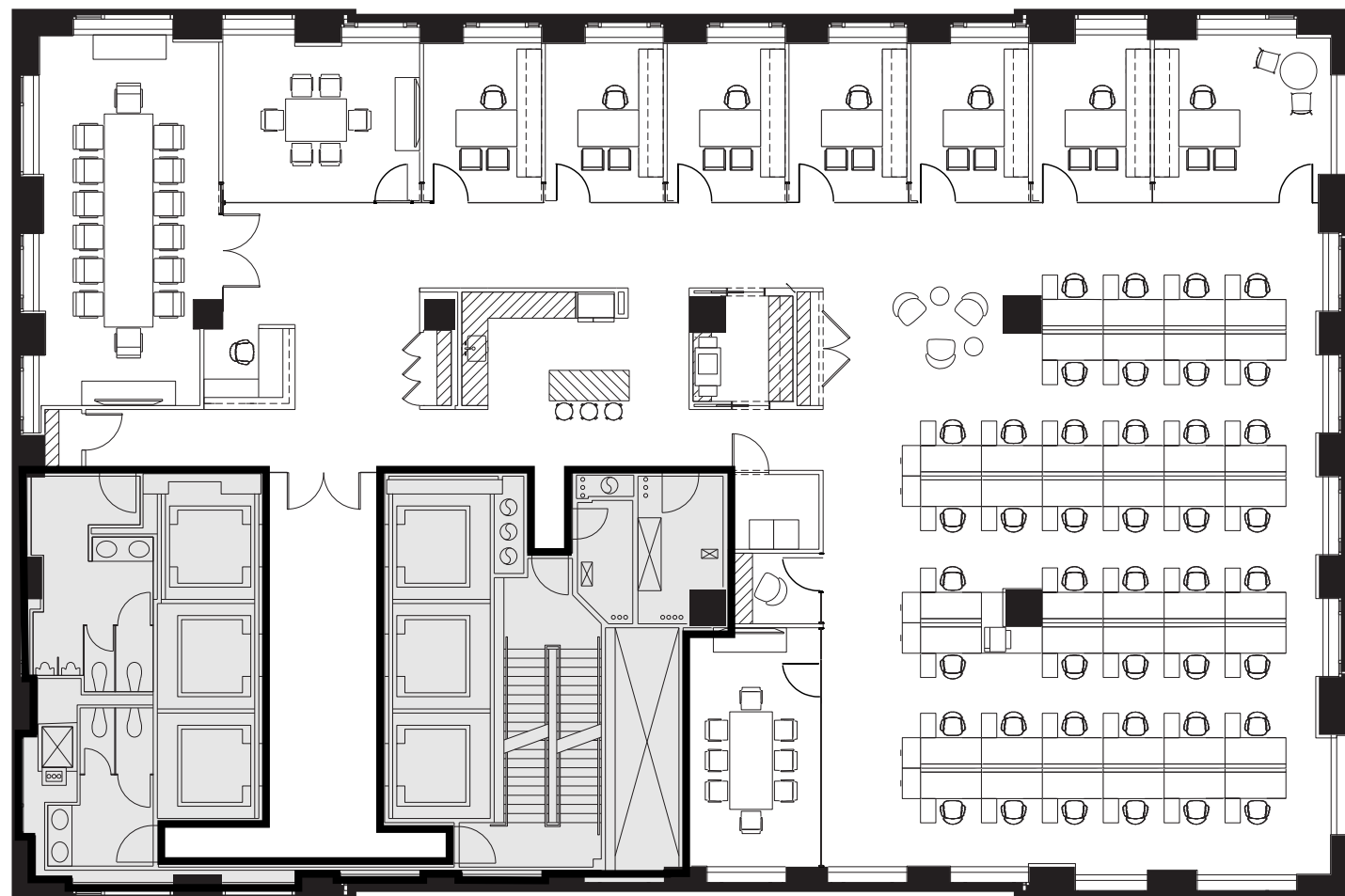
# 30th Floor

3,797 RSF



Private Offices	3	Conference Room	1
Workstations	8	Open Pantry	1
Reception	1	Copy Area	1
		Storage Room	1

## Full Floor Plan (New Prebuilt)

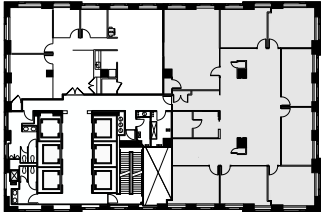


# 24th Floor

9,734 RSF

Executive Office	1	Meeting Room	1
Private Offices	6	Pantry	1
Reception	1	Phone Room	1
Conference Rooms	2	Copy Room	1

Key Plan

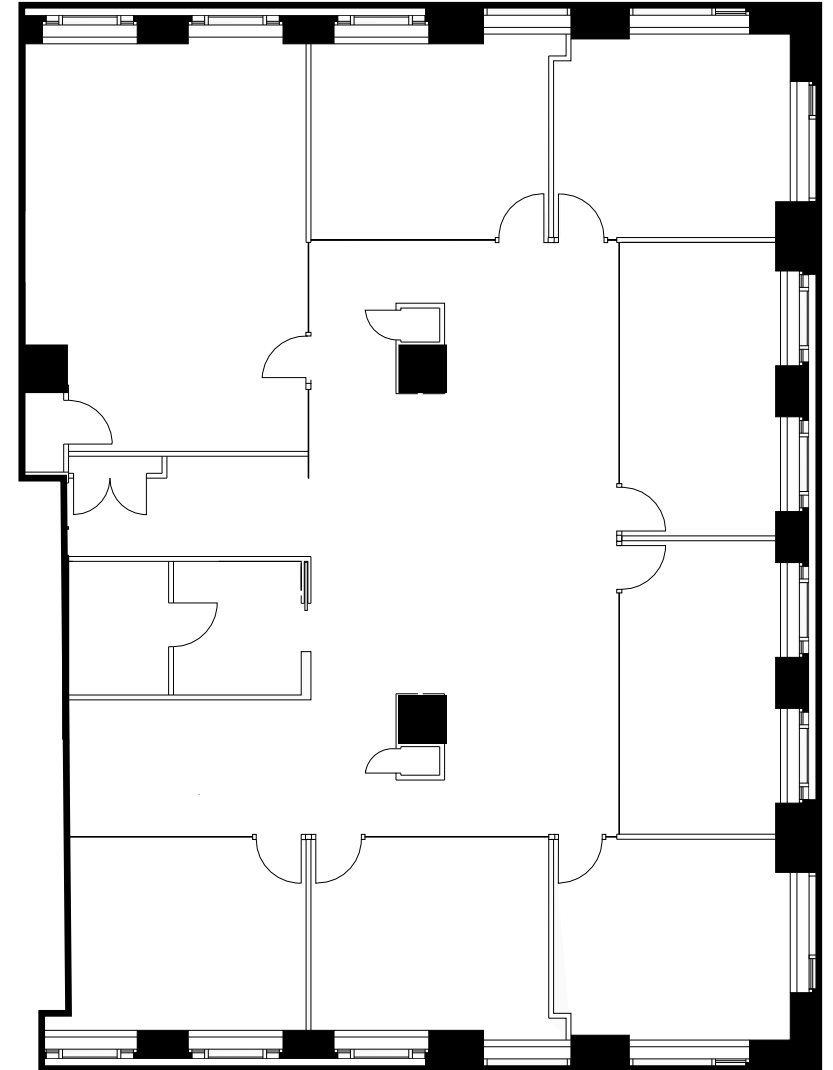


## Partial Floor Plan (As Built)

Available 1/1/2025

# 21st Floor

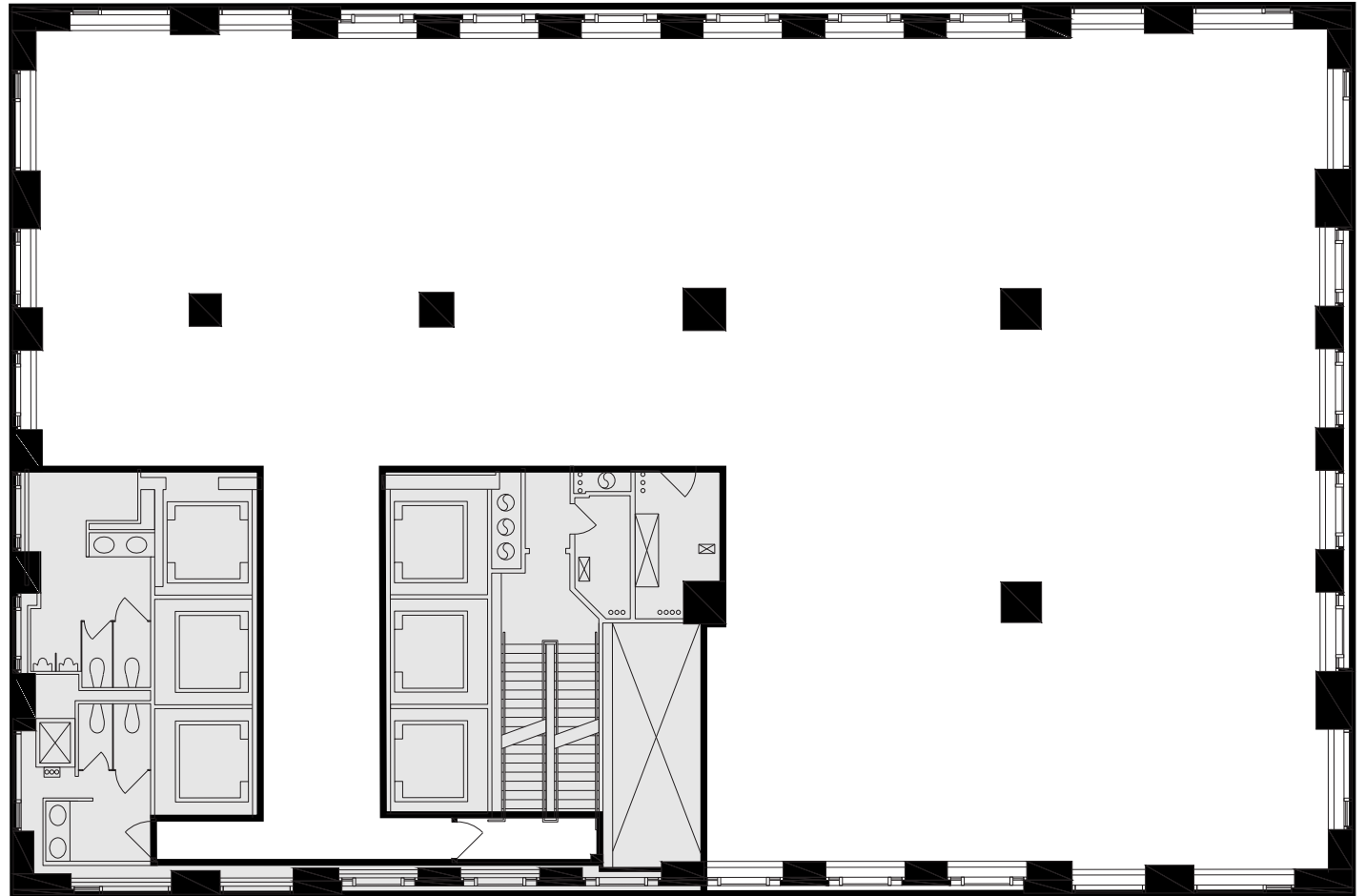
6,545 RSF

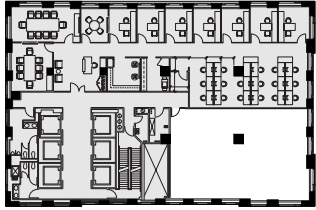


Full Floor  
Core Plan

20th  
Floor

9,697 RSF

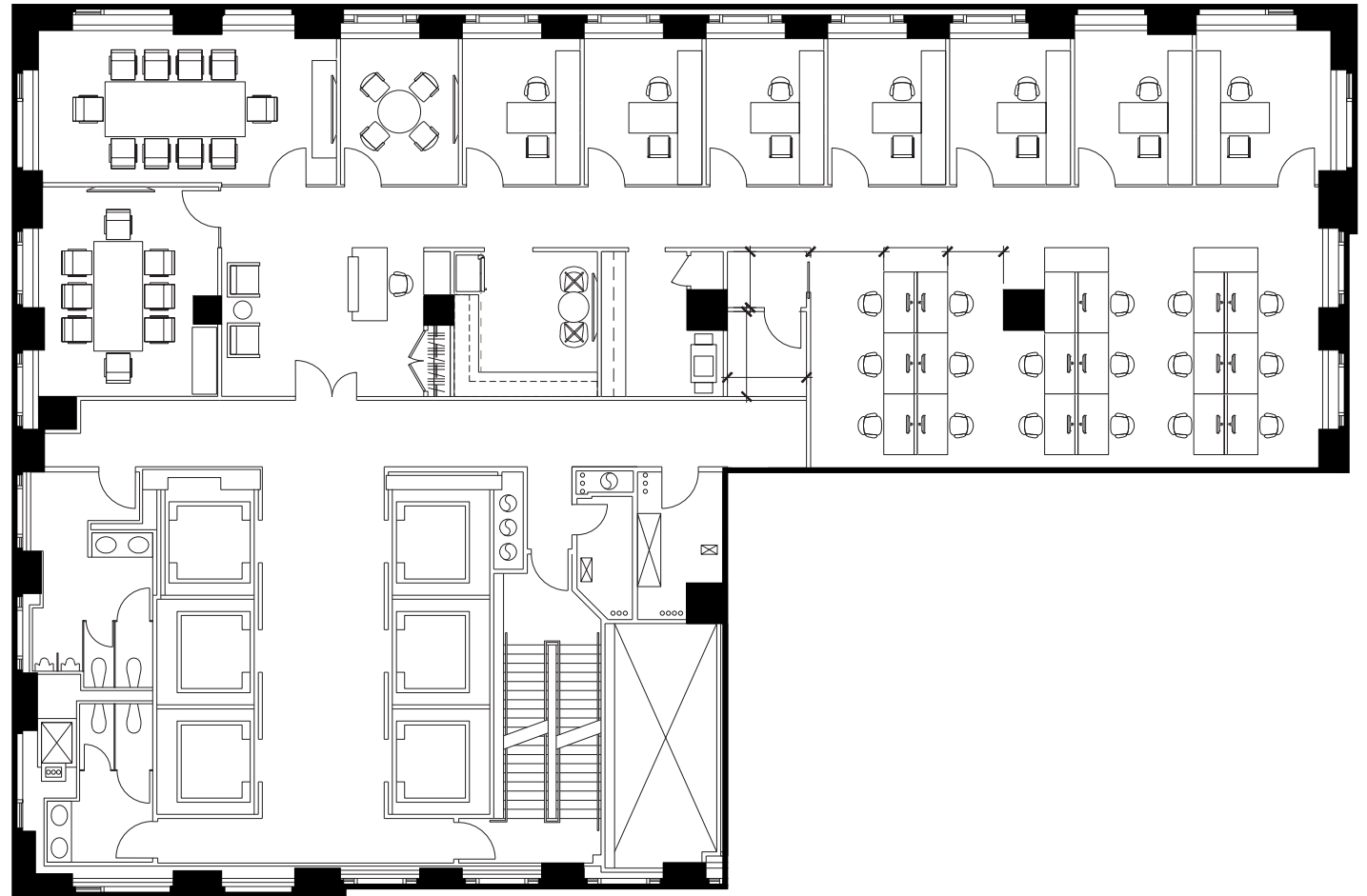




## Partial Floor Plan (Test Fit)

# 19th Floor

6,601 RSF



Offices	7
Workstations	17
Receptionist	1

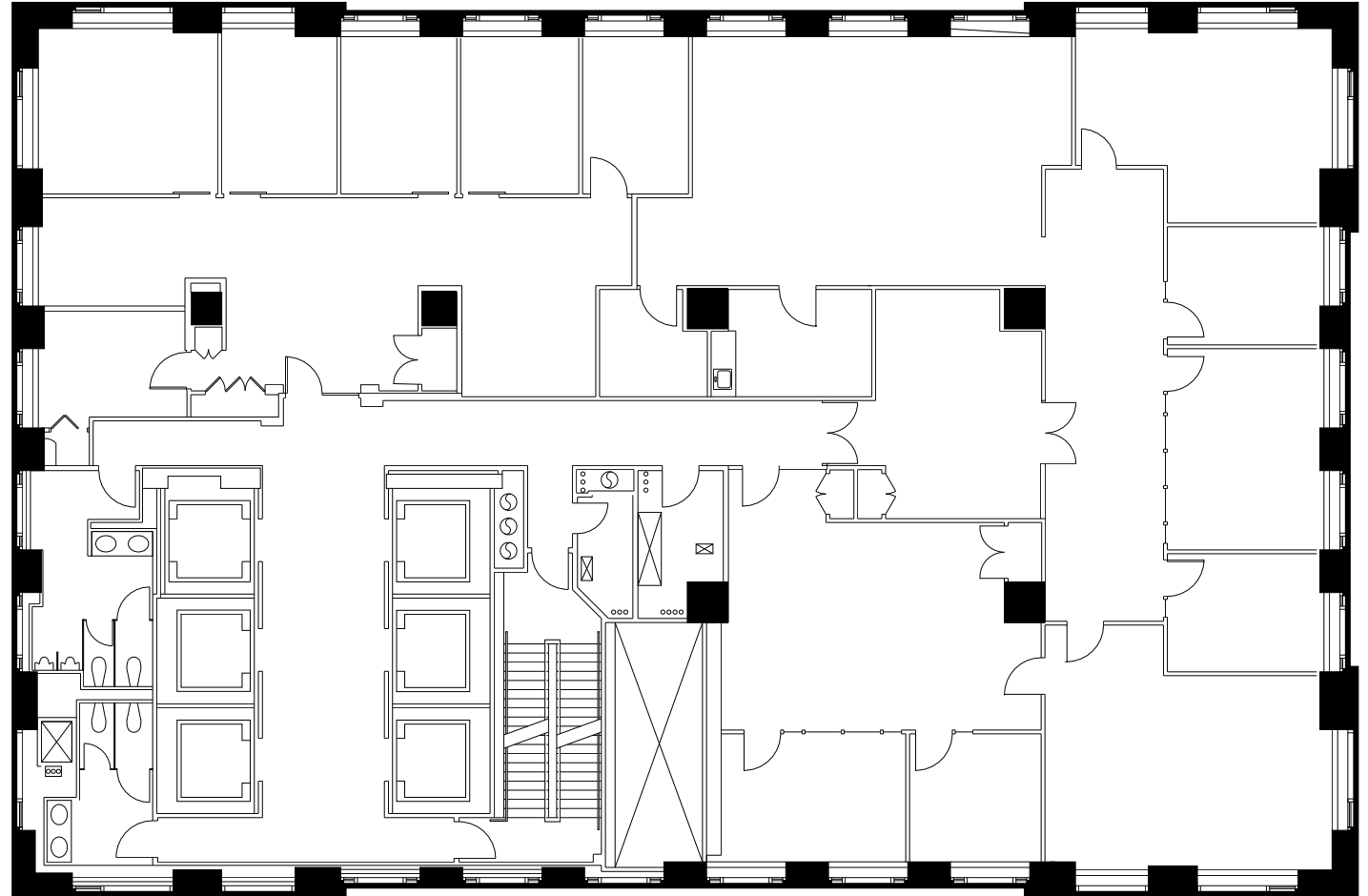


## Full Floor Plan

Available 9/1/2025

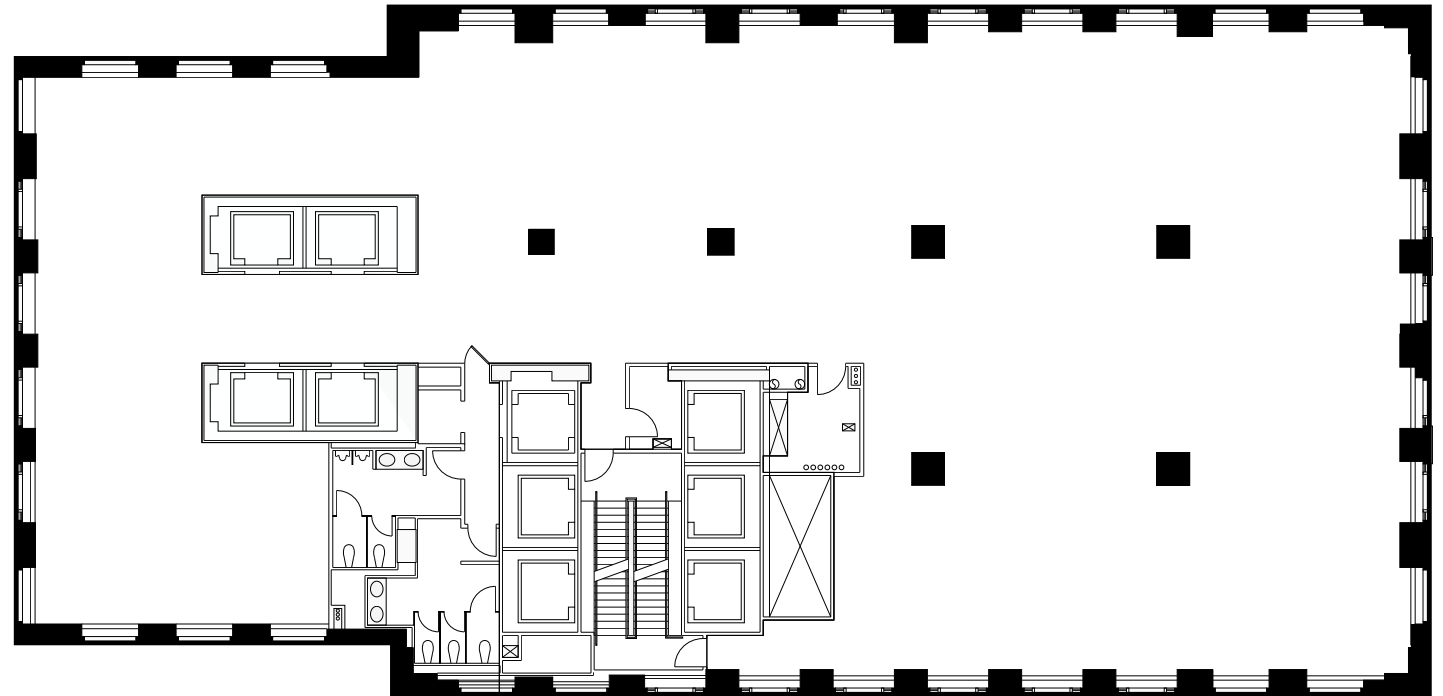
# 17th Floor

9,697 RSF



Full Floor  
(Core Plan)

Available 1/1/2025

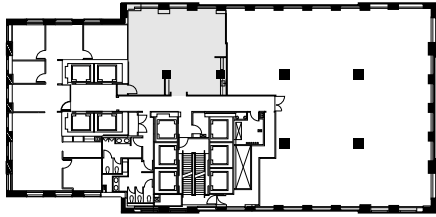


14th  
Floor

12,930 RSF

---

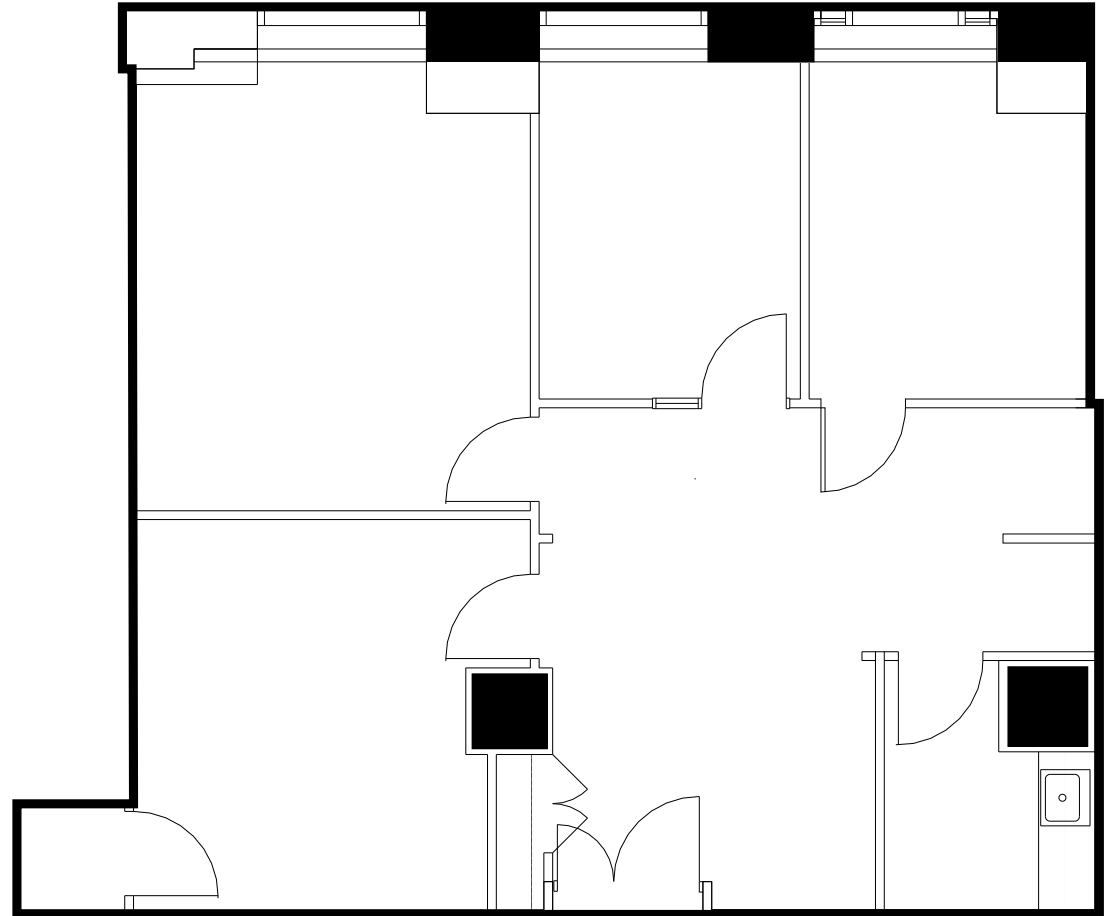
Key Plan



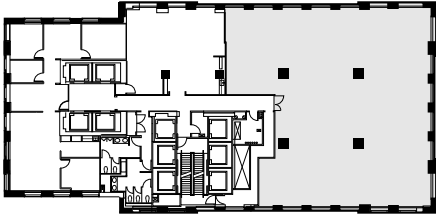
Partial Floor Plan  
(As Built)

8th  
Floor

1,889 RSF



Key Plan



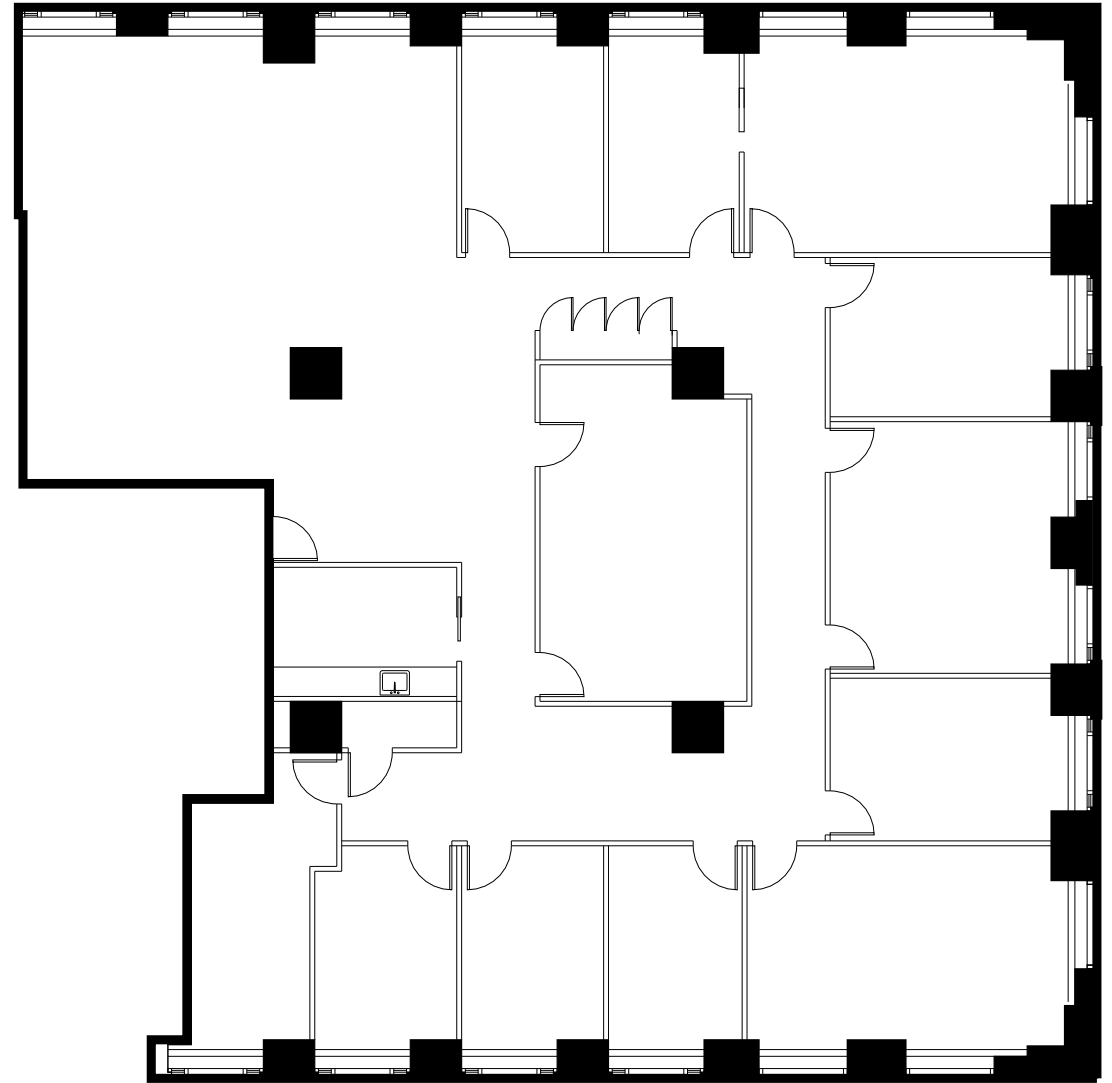
## Partial Floor Plan (As Built)

Available 6/12/2025

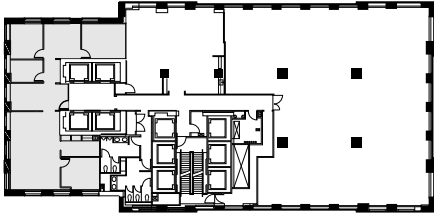
# 8th Floor

7,815 RSF

---



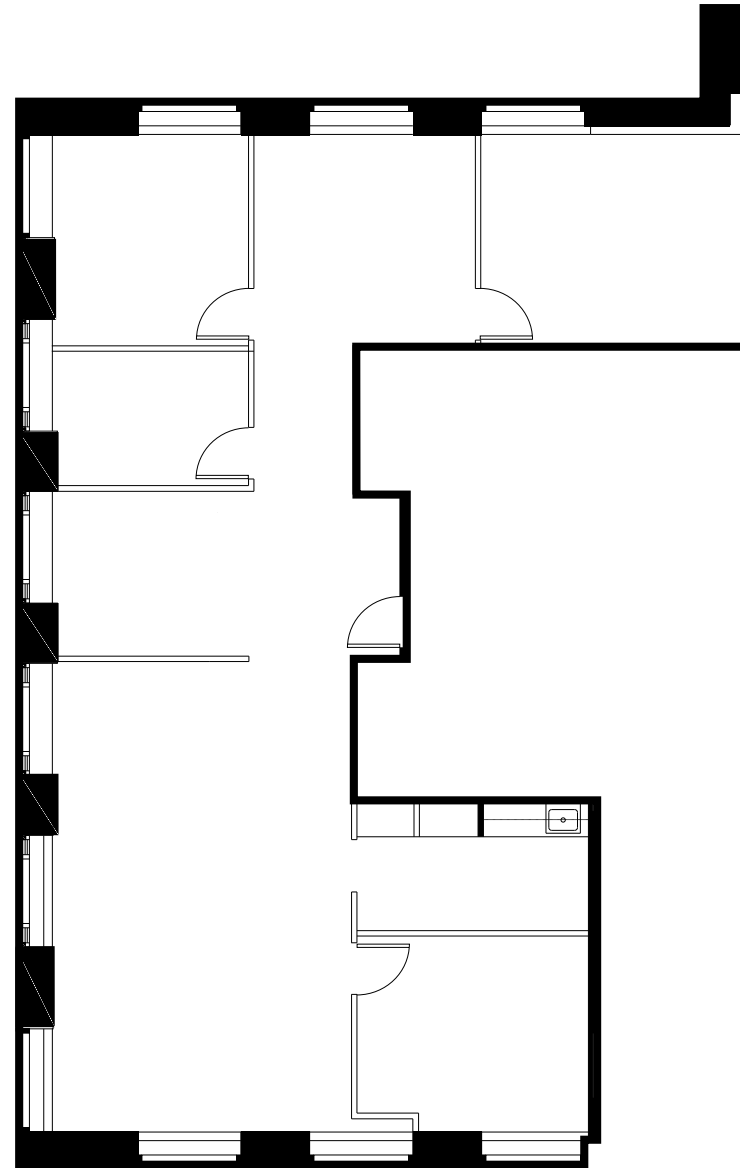
Key Plan



## Partial Floor Plan (As Built)

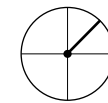
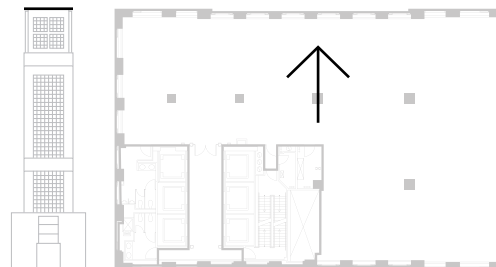
# 8th Floor

3,205 RSF



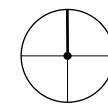
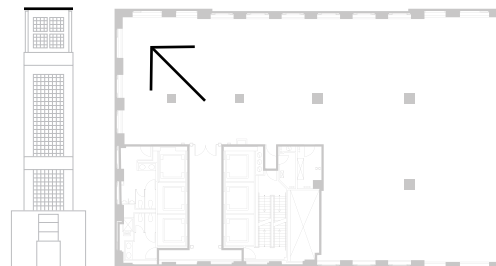
# World-class Point of View.

---



**North East**

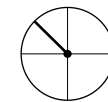
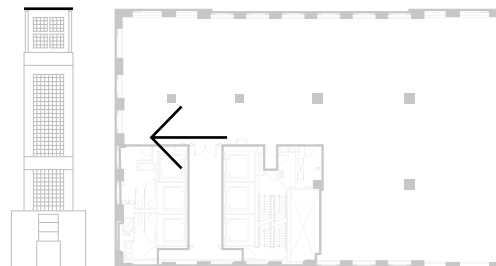
Take in the stunning expanse of Central Park, cut perfectly against 5th Avenue's steadfast wall of classic architecture.



**North**

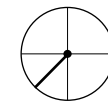
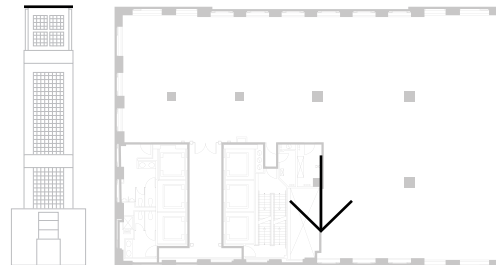
Contemplative scenes where the verdant meets vaulting high rises, and the reflection of the sky peers into the Hudson River.





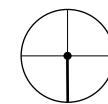
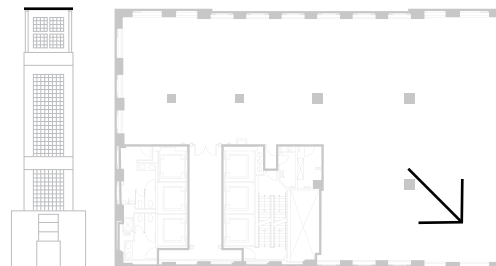
**North West**

At such great heights, glinting glass and steel are success's most constant companion.



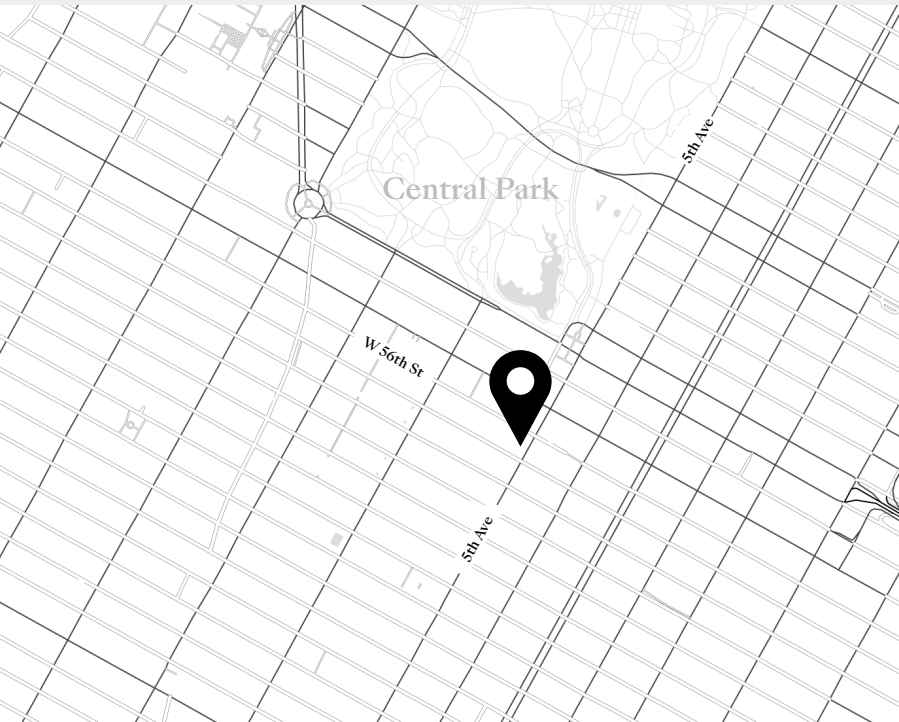
**South West**

Few things feel out of reach with the world's most iconic skyline at your back.



**South**

Landmarks as far as the eye can see, complete with hints of the East River; one of the many perks of being at the center of it all.



# The World-renowned Plaza District.

## **An Incomparable Address**

Manhattan's Plaza District is not only home to the city's most iconic buildings, it's also the largest commercial, media and entertainment center on the globe. Steeped in history and worldwide fame, everything from its shops on 5th Avenue to Central Park is quintessential New York.



Pause for reflection amid the stunningly surreal heartbeat of the city.



Fifth Avenue, home to over a century of the world's best beloved fashion.

# Leisure, Illuminated.

## Culture & Shopping

Peruse the shops of 5th Avenue, where the world's most famed fashion has made its home for over a century. Take in one of the 250 performances annually at Carnegie Hall, showcasing music – classical and current – since 1891. Visit the AI Hirschfield Theater for a Broadway musical, or spark inspiration at the Museum of Modern Art. It's all here, constantly evolving, reinventing itself for the next generation to come – and it's all at the doorstep of 712 5th Avenue.



A mecca for music, classical and new, for over 125 years.



The Museum of Modern Art, hosting nearly 3,000,000 visitors each year.



Meetings and more at a red-carpeted symbol of New York luxury.

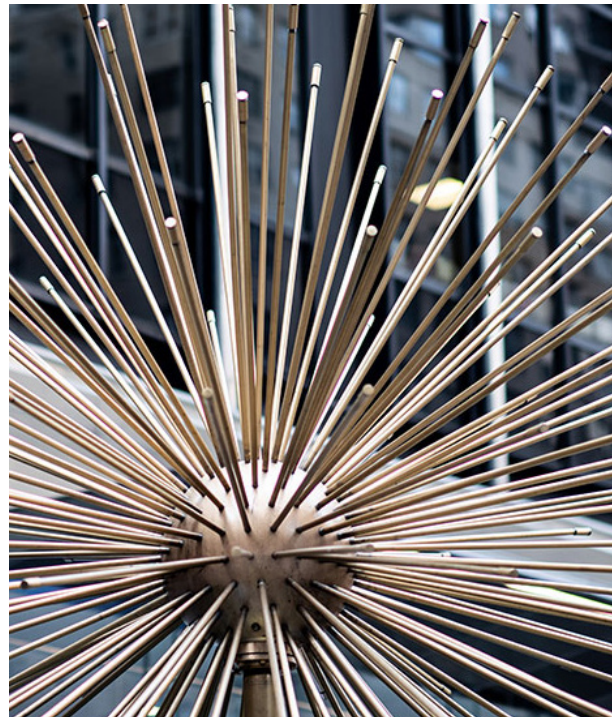


The Plaza District, an exceptional place to call home.

# The Luxury of Connection.

## Convenience & Access

Steps from Central Park and extraordinarily connected to public transit, 712 5th Avenue's location is its luxury. And once there, a vibrant neighborhood can be found at one's fingertips. Follow in Ernest Hemingway's footsteps with a dry martini at Club 21, or meet friends at the red-carpeted St. Regis. Past and present collide at every turn, whether it's inside the Apple Store's glass cube or on the tennis courts of the historic University Club.



Eclectic energy resonates throughout the world's largest business district.



Deals happen fireside at the Polo Bar.



The Plaza Hotel, a plush meeting spot since 1907.



Steeped in history. Seeking what's next.

# Storied & Spectacular.

## Iconic Plaza District

Whether it's a morning run over the serene Gapstow Bridge in the park or meeting clients at the landmark Plaza Hotel, every moment spent in this notable neighborhood feels imbued with sublime New York cache – because it is. Time and intrigue have lent an undeniably captivating quality to every Midtown icon within reach, from the Pulitzer Fountain to Columbus Circle and beyond.



The Museum of Natural History as seen from Cherry Fountain.



The Bethesda Terrace Fountain, featuring the Angel of the Waters.



# Master Midtown.

## Culture & Shopping

- |                         |                     |
|-------------------------|---------------------|
| 1 Al Hirschfeld Theatre | 5 Bloomingdale's    |
| 2 Carnegie Hall         | 6 Bergdorf Goodman  |
| 3 MoMA                  | 7 Saks Fifth Avenue |
| 4 Chanel                | 8 Tiffany & Co      |

## Convenience & Access

- |                          |                        |
|--------------------------|------------------------|
| 9 The St. Regis New York | 13 Equinox Rockefeller |
| 10 21 Club               | 14 Apple Fifth Avenue  |
| 11 The Polo Bar          | 15 One 57              |
| 12 University Club       | 16 53 West 53          |

## Storied & Spectacular

- |                         |                              |
|-------------------------|------------------------------|
| 17 Gapstow Bridge       | 21 Tecumseh Statue           |
| 18 Belvedere Castle     | 22 Pulitzer Fountain         |
| 19 Cherry Hill Fountain | 23 Columbus Circle           |
| 20 The Plaza            | 24 Museum of Natural History |

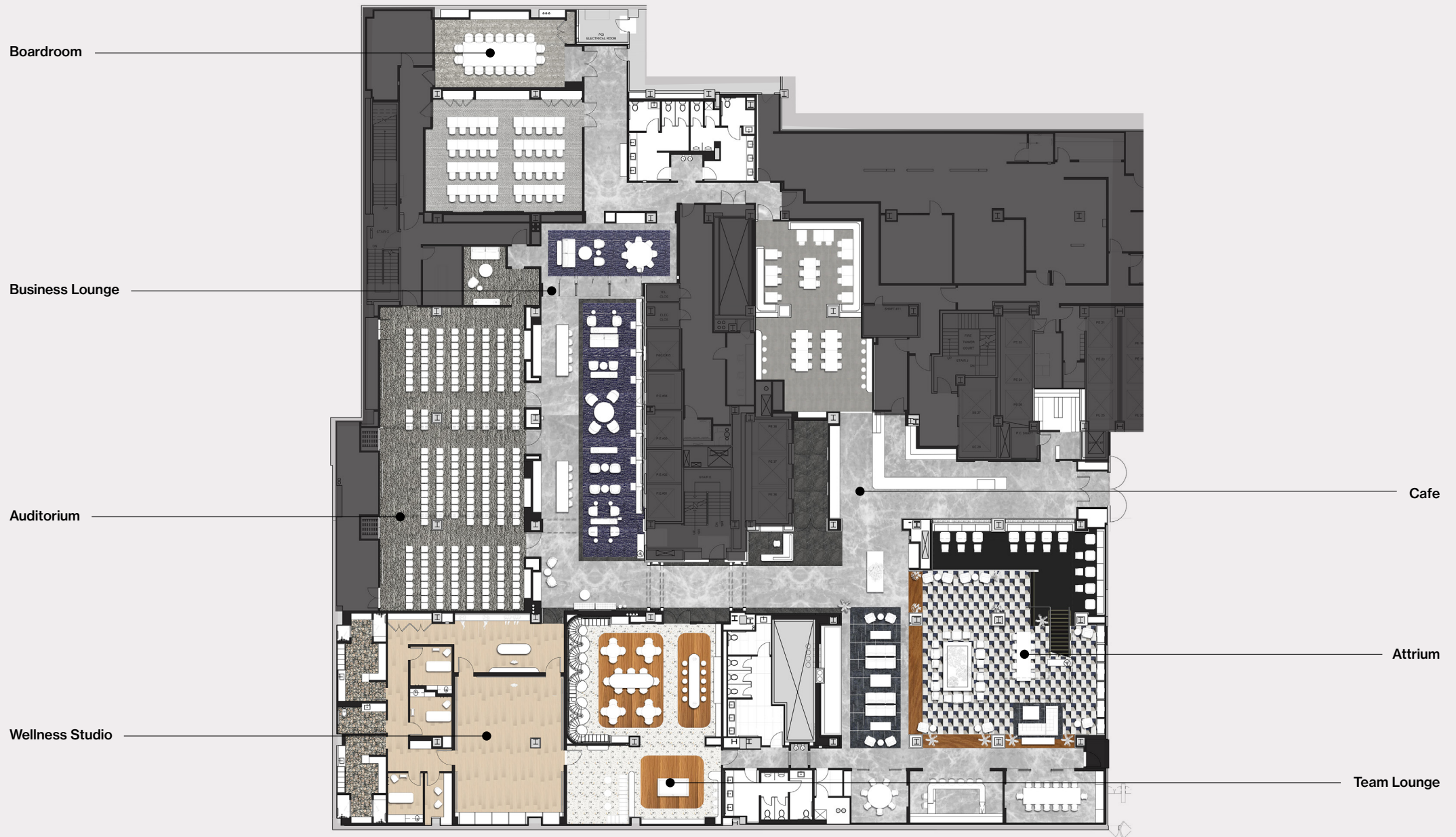


# Paramount Amenity Center

The new large-scale conference and amenity center at 1301 Avenue of the Americas is available exclusively to tenants within Paramount's New York portfolio.

---

# Concourse Level Amenity Space





# Street Level Entrance to Amenity Center

---

1301 Avenue of the Americas



# Concourse Level Atrium

1301 Avenue of the Americas



PARAMOUNT  
CAFÉ

# In-Building Cafe

1301 Avenue of the Americas



# Team Lounge

1301 Avenue of the Americas



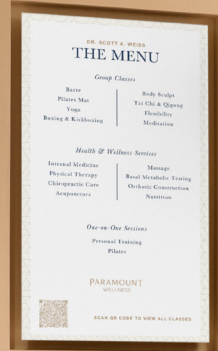
# Boardroom

1301 Avenue of the Americas



# Business Lounge





PARAMOUNT  
WELLNESS

# Wellness Studio

1301 Avenue of the Americas



# Auditorium

1301 Avenue of the Americas

Fortune  
Favors  
the Bold.

---

# Paramount Group, Inc.

## Leasing Information

**Peter Brindley**  
Executive Vice President, Head of Real Estate  
212 237 3156  
pbrindley@pgre.com

**Douglas Neye**  
Senior Vice President  
212 237 2976  
dneye@pgre.com

**Sean Kirk**  
Vice President  
212 237 3168  
skirk@pgre.com

Paramount Group, Inc. is a real estate investment and management firm with in-house expertise in asset management, property management, leasing, acquisition, repositioning, redevelopment and financing. Established in 1978 by Werner Otto, Paramount is one of the largest publicly-owned real estate companies headquartered in New York City. Over several decades and numerous market cycles, Paramount has provided first class properties, services and amenities to its tenants. Albert Behler, President and CEO, has led Paramount since 1991 and, along with a seasoned, committed and proven management team, has assembled the company's current 13.9 million-square-foot portfolio of high quality, Class A office building investments, a retail property, as well as debt and equity investments in New York and San Francisco.

Seven  
Twelve  
Fifth  
Avenue

[SevenTwelveFifth.com](http://SevenTwelveFifth.com)