

# Floor Availability

As of May 2023

All units are available immediately unless dated below.

# Seven Twelve Fifth Avenue

**Boutique Floor Plates**  
Each full floor comprises +/- 9,800 RSF  
with partial to full floors available.

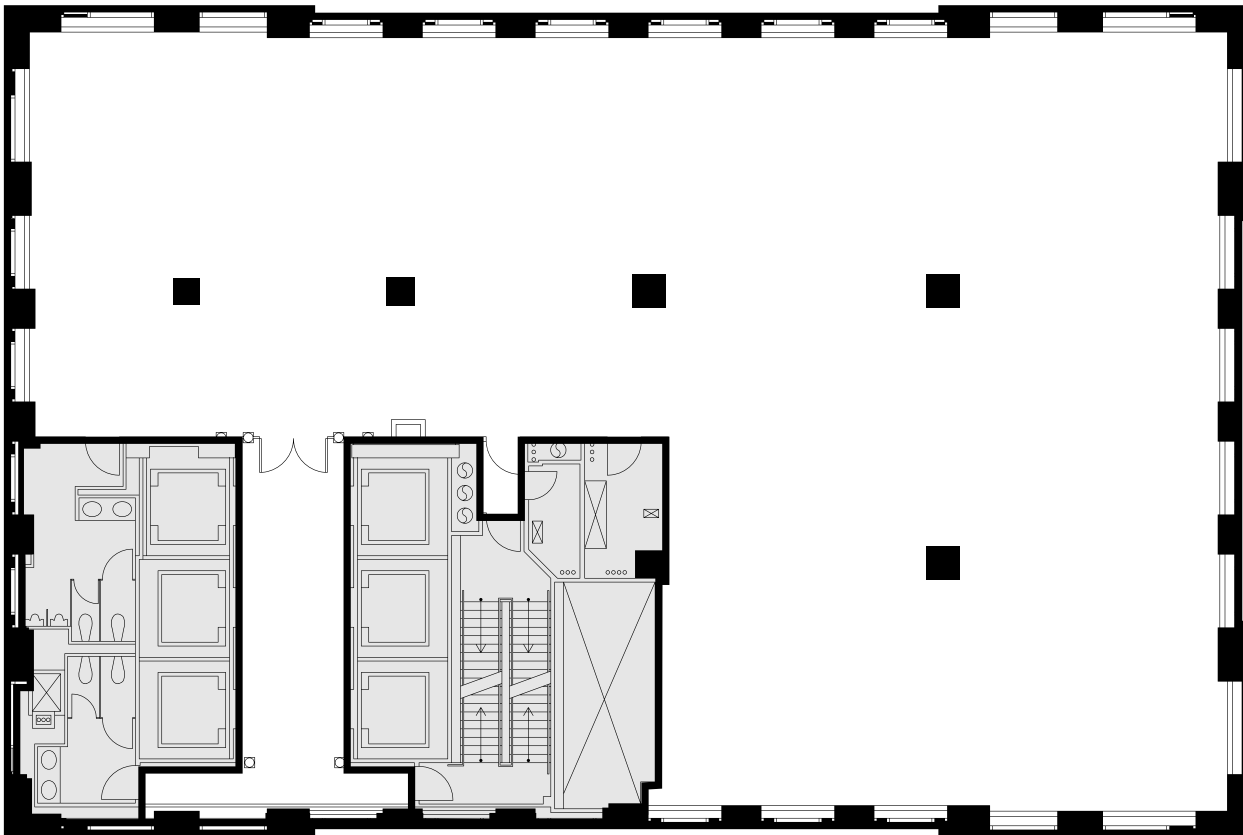
48		9,866 RSF
46		9,866 RSF
45		2,306 RSF
38		7,102 RSF
34	Available 4/1/2024	9,697 RSF
33		4,133 RSF
32		5,593 RSF
30	Available 1/1/2024	3,797 RSF
24		9,734 RSF
22		4,845 RSF
20		9,697 RSF
19		9,697 RSF
8	Available 2/1/2024	3,205 RSF

# Seven Twelve Fifth Avenue

## Full Floor Core Plan

Representative Full Floor Plan

# +/- 9,800 RSF



712 5<sup>th</sup> Avenue  
New York, NY 10019

[SevenTwelveFifth.com](http://SevenTwelveFifth.com)

**Peter Brindley**  
Executive Vice President,  
Head of Real Estate  
212 237 3156  
[pbrindley@pgre.com](mailto:pbrindley@pgre.com)

**Douglas Neye**  
Senior Vice President  
212 237 2976  
[dneye@pgre.com](mailto:dneye@pgre.com)

**Sean Kirk**  
Vice President  
212 237 3168  
[skirk@pgre.com](mailto:skirk@pgre.com)

  
**PARAMOUNT**  
GROUP

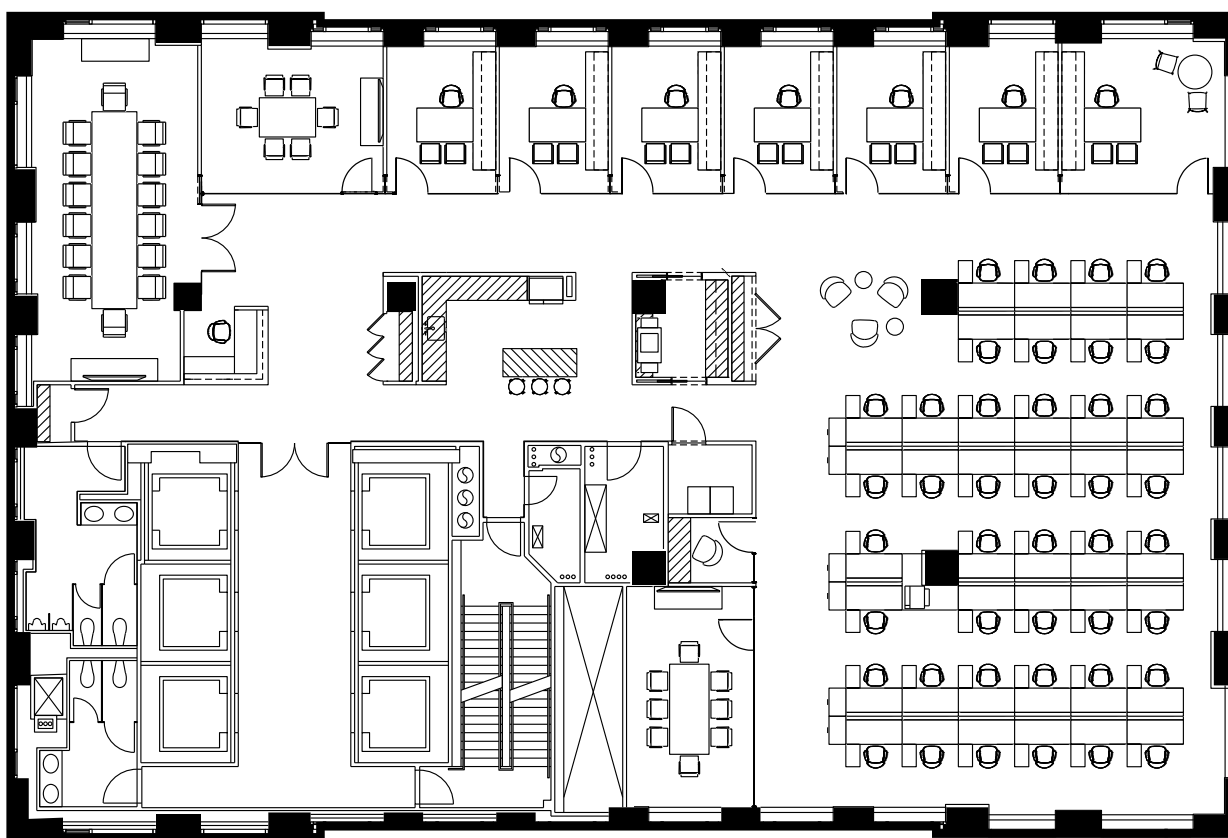
# Seven Twelve Fifth Avenue

## Open Plan

Representative Full Floor Plan

# +/- 9,800 RSF

Executive Office	1	Meeting Room	1
Private Offices	6	Pantry	1
Reception	1	Phone Room	1
Conference Rooms	2	Copy Room	1



712 5<sup>th</sup> Avenue  
New York, NY 10019  
[SevenTwelveFifth.com](http://SevenTwelveFifth.com)

**Peter Brindley**  
Executive Vice President,  
Head of Real Estate  
212 237 3156  
[pbrindley@pgre.com](mailto:pbrindley@pgre.com)

**Douglas Neye**  
Senior Vice President  
212 237 2976  
[dneye@pgre.com](mailto:dneye@pgre.com)

**Sean Kirk**  
Vice President  
212 237 3168  
[skirk@pgre.com](mailto:skirk@pgre.com)

  
**PARAMOUNT**  
GROUP

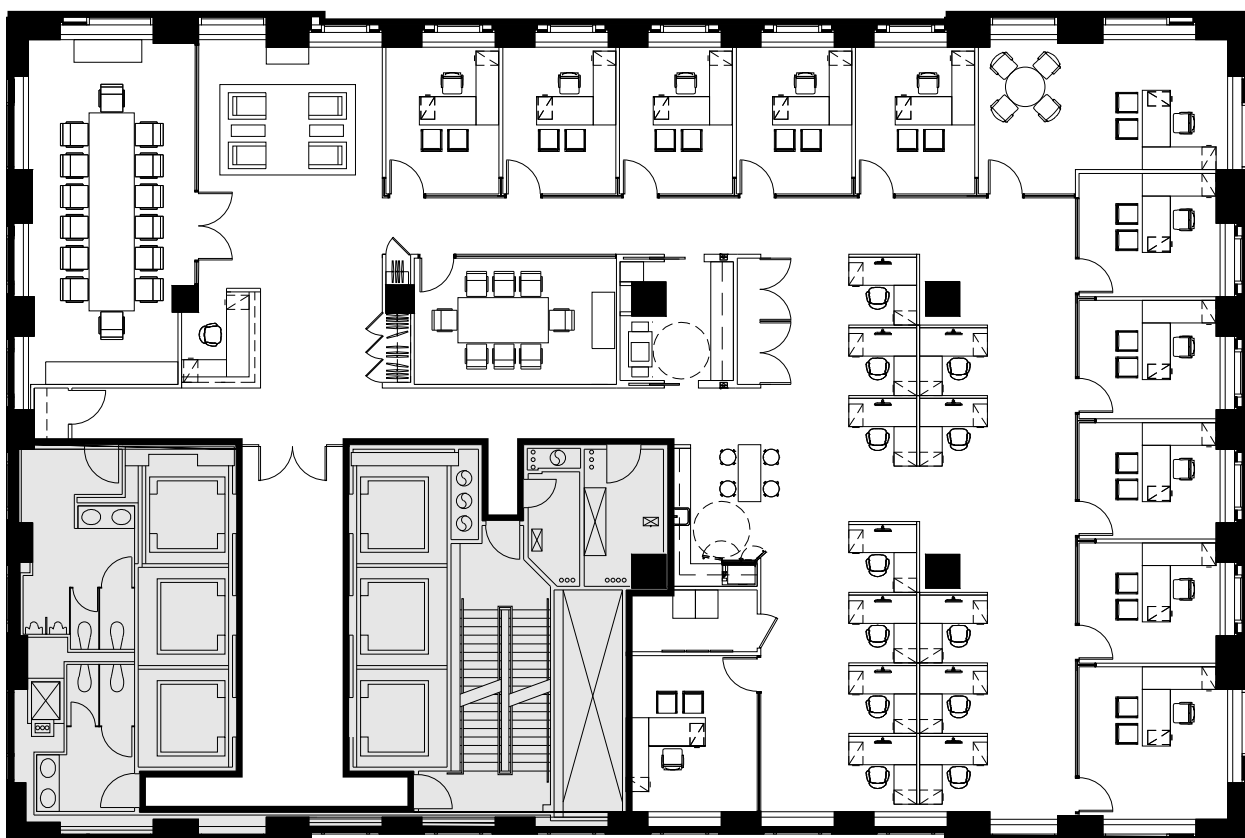
# Seven Twelve Fifth Avenue

## Office Plan

Representative Full Floor Plan

# +/- 9,800 RSF

Executive Office	1	Board Room	1	Open Pantry	1
Private Offices	11	Conference Room	1	Copy Area	1
Workstations	12	Cafe	1	Coat Rooms	3
Reception	1	IT Room	1		



712 5<sup>th</sup> Avenue  
New York, NY 10019

[SevenTwelveFifth.com](http://SevenTwelveFifth.com)

**Peter Brindley**  
Executive Vice President,  
Head of Real Estate  
212 237 3156  
[pbrindley@pgre.com](mailto:pbrindley@pgre.com)

**Douglas Neye**  
Senior Vice President  
212 237 2976  
[dneye@pgre.com](mailto:dneye@pgre.com)

**Sean Kirk**  
Vice President  
212 237 3168  
[skirk@pgre.com](mailto:skirk@pgre.com)

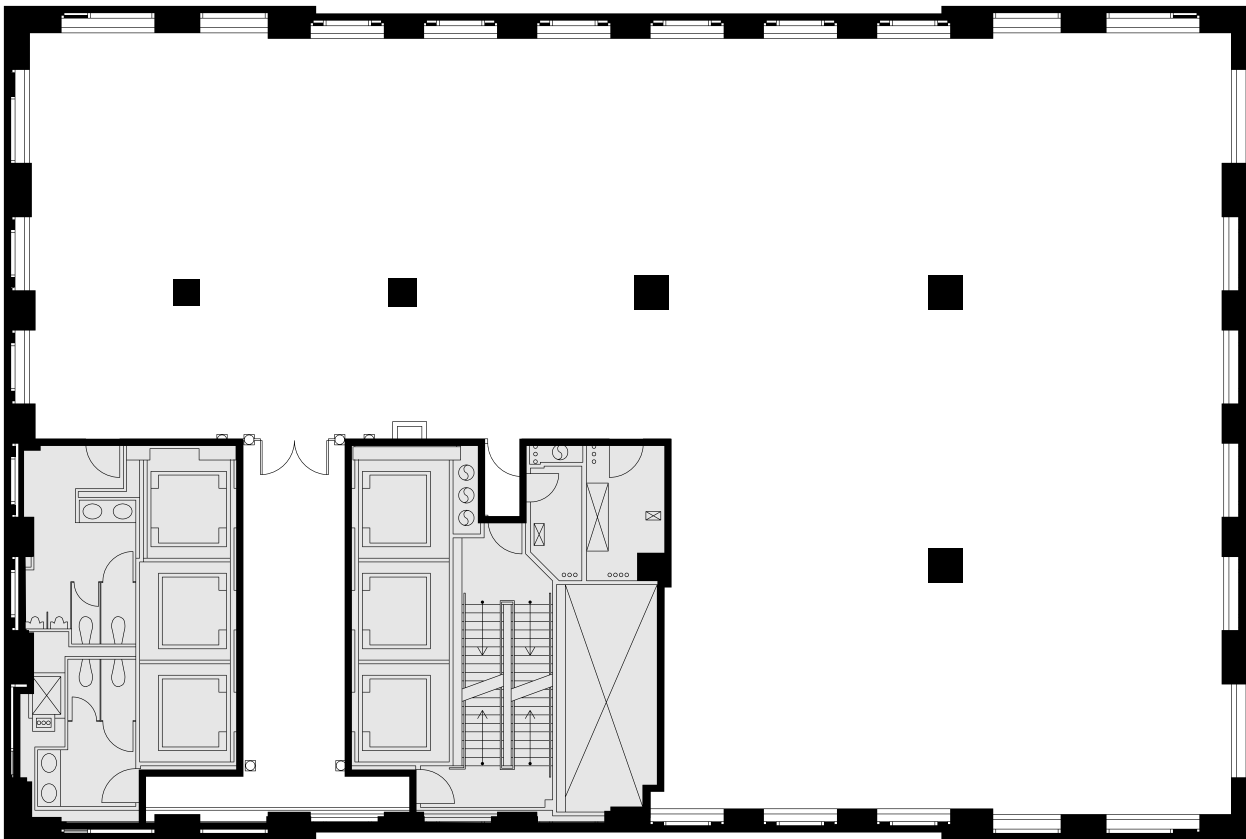
  
**PARAMOUNT**  
GROUP

# Seven Twelve Fifth Avenue

48th  
Floor

Full Floor Core Plan

9,833 RSF



712 5<sup>th</sup> Avenue  
New York, NY 10019  
[SevenTwelveFifth.com](http://SevenTwelveFifth.com)

**Peter Brindley**  
Executive Vice President,  
Head of Real Estate  
212 237 3156  
[pbrindley@pgre.com](mailto:pbrindley@pgre.com)

**Douglas Neye**  
Senior Vice President  
212 237 2976  
[dneye@pgre.com](mailto:dneye@pgre.com)

**Sean Kirk**  
Vice President  
212 237 3168  
[skirk@pgre.com](mailto:skirk@pgre.com)

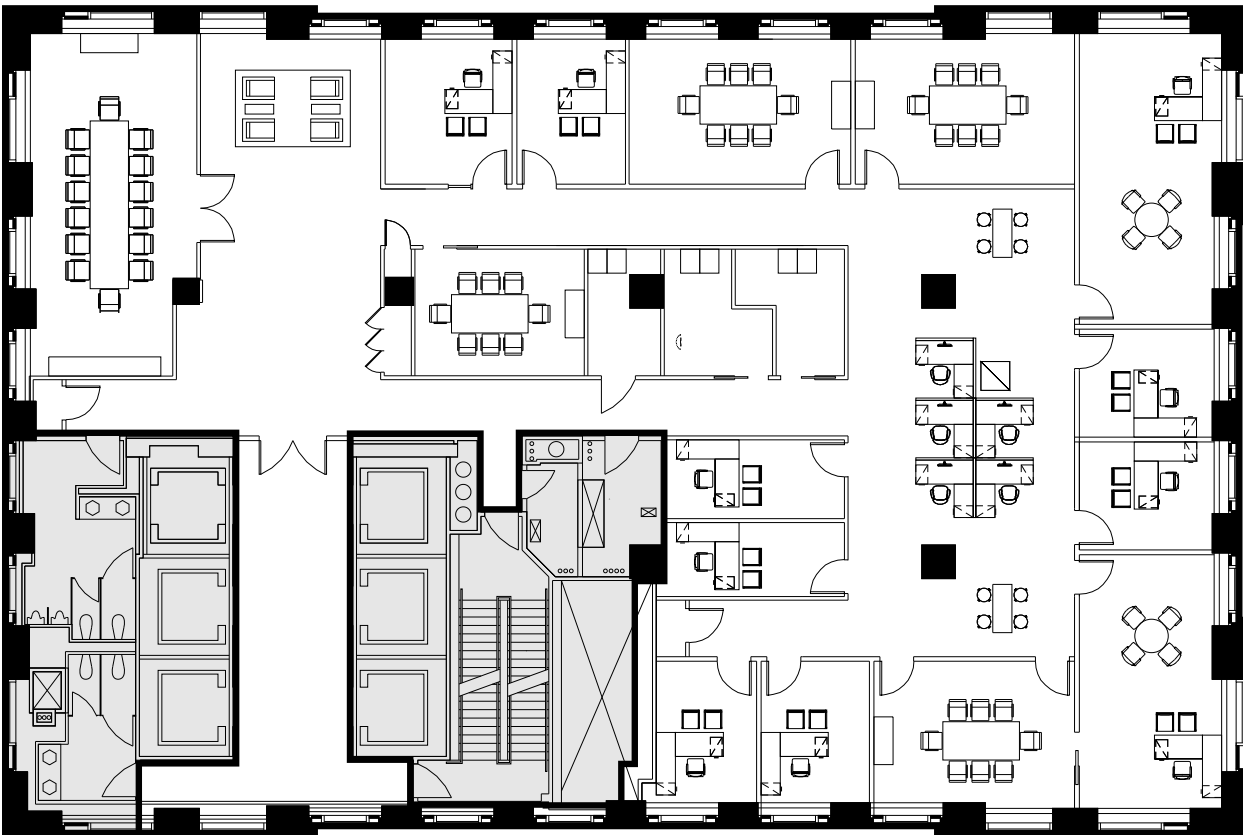
  
**PARAMOUNT**  
GROUP

# Seven Twelve Fifth Avenue

## 46th Floor

Full Floor Plan Existing Conditions

# 9,866 RSF



712 5<sup>th</sup> Avenue  
New York, NY 10019  
[SevenTwelveFifth.com](http://SevenTwelveFifth.com)

**Peter Brindley**  
Executive Vice President,  
Head of Real Estate  
212 237 3156  
[pbrindley@pgre.com](mailto:pbrindley@pgre.com)

**Douglas Neye**  
Senior Vice President  
212 237 2976  
[dneye@pgre.com](mailto:dneye@pgre.com)

**Sean Kirk**  
Vice President  
212 237 3168  
[skirk@pgre.com](mailto:skirk@pgre.com)

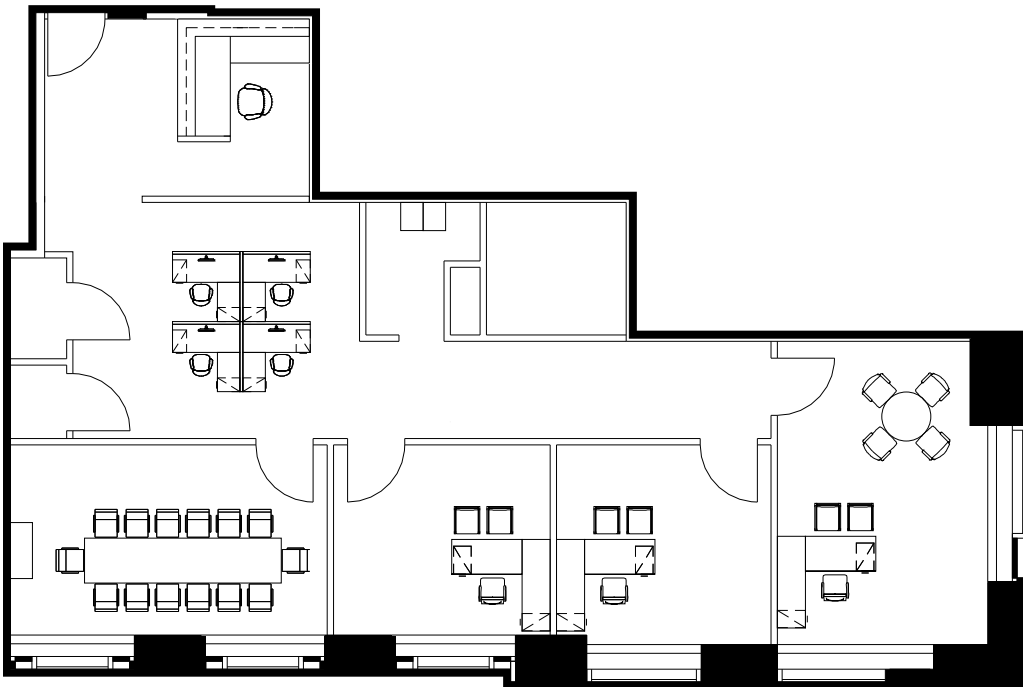
  
**PARAMOUNT**  
GROUP

# Seven Twelve Fifth Avenue

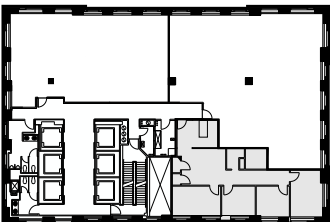
## 45th Floor

Partial Floor Plan (As Built)

# 2,306 RSF



Key Plan



712 5<sup>th</sup> Avenue  
New York, NY 10019  
[SevenTwelveFifth.com](http://SevenTwelveFifth.com)

**Peter Brindley**  
Executive Vice President,  
Head of Real Estate  
212 237 3156  
[pbrindley@pgre.com](mailto:pbrindley@pgre.com)

**Douglas Neye**  
Senior Vice President  
212 237 2976  
[dneye@pgre.com](mailto:dneye@pgre.com)

**Sean Kirk**  
Vice President  
212 237 3168  
[skirk@pgre.com](mailto:skirk@pgre.com)

  
**PARAMOUNT**  
GROUP

# Seven Twelve Fifth Avenue

## 38th Floor

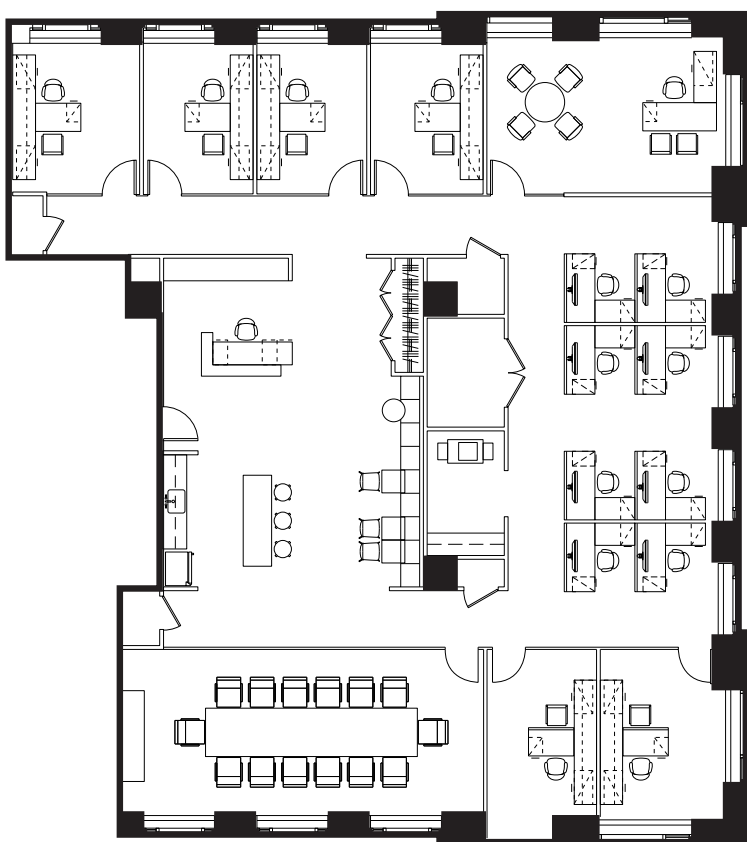
Partial Floor Plans (Test Fit)

# 7,102 RSF

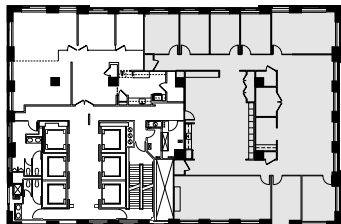
Executive Office	1
Private Offices	6
Workstations	8
Reception	1

Conference Room	1
Pantry	1
Enclosed Collab Seats	14
Open Collab Seats	9

Copy Area	1
Storage Room	4
Computer Room	1



Key Plan



712 5<sup>th</sup> Avenue  
New York, NY 10019  
[SevenTwelveFifth.com](http://SevenTwelveFifth.com)

**Peter Brindley**  
Executive Vice President,  
Head of Real Estate  
212 237 3156  
[pbrindley@pgre.com](mailto:pbrindley@pgre.com)

**Douglas Neye**  
Senior Vice President  
212 237 2976  
[dneye@pgre.com](mailto:dneye@pgre.com)

**Sean Kirk**  
Vice President  
212 237 3168  
[skirk@pgre.com](mailto:skirk@pgre.com)

  
**PARAMOUNT**  
GROUP

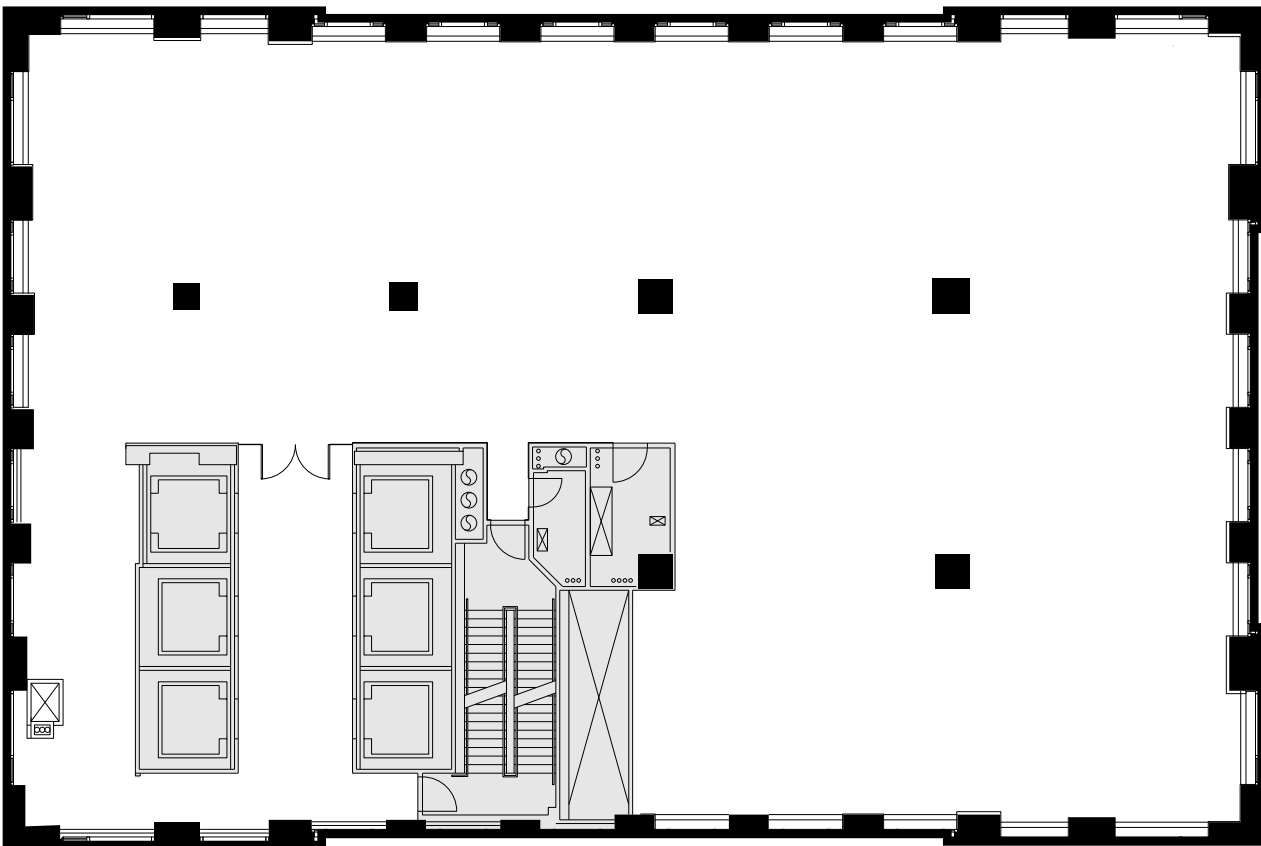


# Seven Twelve Fifth Avenue

34th  
Floor

Full Floor Core Plan

9,697 RSF



712 5<sup>th</sup> Avenue  
New York, NY 10019  
[SevenTwelveFifth.com](http://SevenTwelveFifth.com)

**Peter Brindley**  
Executive Vice President,  
Head of Real Estate  
212 237 3156  
[pbrindley@pgre.com](mailto:pbrindley@pgre.com)

**Douglas Neye**  
Senior Vice President  
212 237 2976  
[dneye@pgre.com](mailto:dneye@pgre.com)

**Sean Kirk**  
Vice President  
212 237 3168  
[skirk@pgre.com](mailto:skirk@pgre.com)

  
**PARAMOUNT**  
GROUP

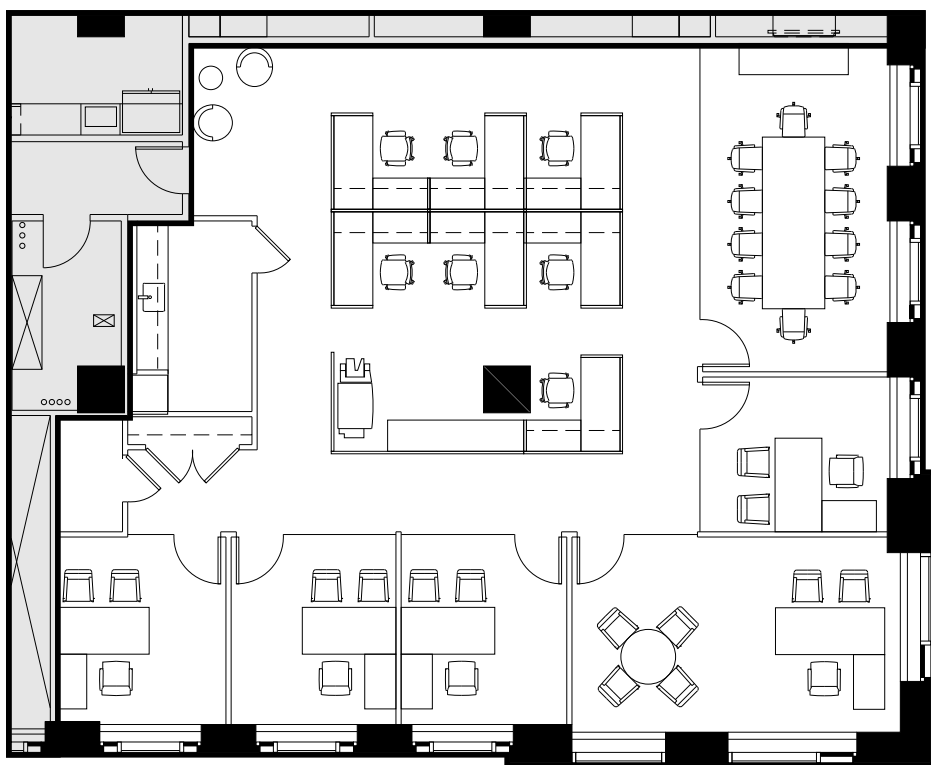
# Seven Twelve Fifth Avenue

## 33rd Floor

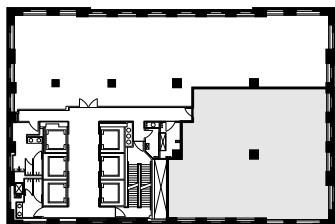
Partial Floor Plan (New Prebuilt)

# 4,133 RSF

Executive Office	1	Conference Room	1	Copy Area	1
Private Offices	4	IT Room	1	Storage Room	1
Workstations	7	Open Pantry	1		



Key Plan



712 5<sup>th</sup> Avenue  
New York, NY 10019  
[SevenTwelveFifth.com](http://SevenTwelveFifth.com)

**Peter Brindley**  
Executive Vice President,  
Head of Real Estate  
212 237 3156  
[pbrindley@pgre.com](mailto:pbrindley@pgre.com)

**Douglas Neye**  
Senior Vice President  
212 237 2976  
[dneye@pgre.com](mailto:dneye@pgre.com)

**Sean Kirk**  
Vice President  
212 237 3168  
[skirk@pgre.com](mailto:skirk@pgre.com)

  
**PARAMOUNT**  
GROUP

# Seven Twelve Fifth Avenue

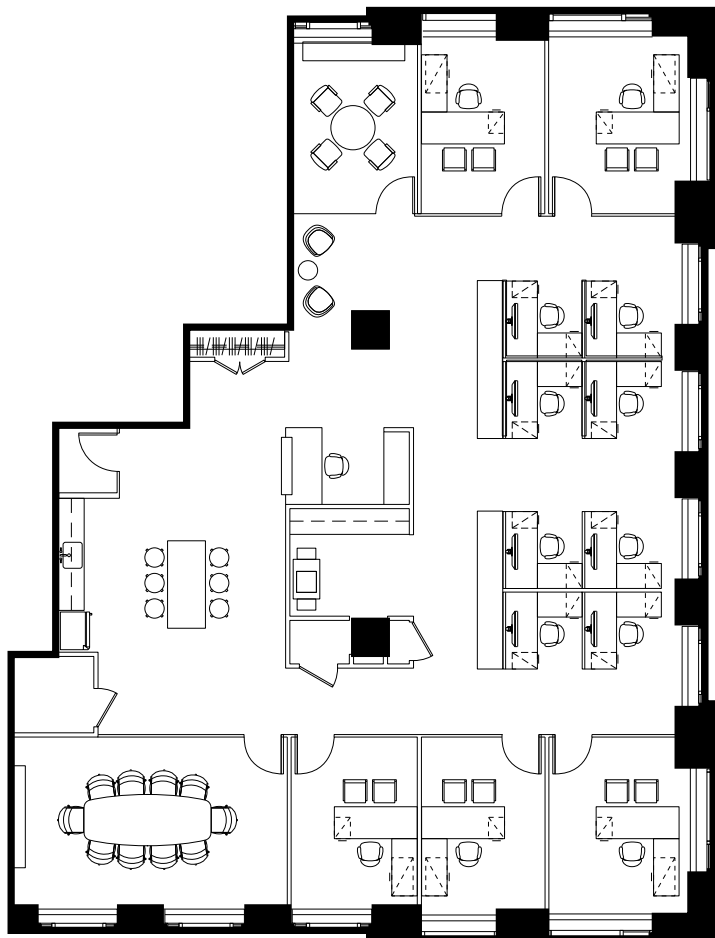
## 32nd Floor

Private Offices	5
Workstations	8
Reception	1
Conference Room	1

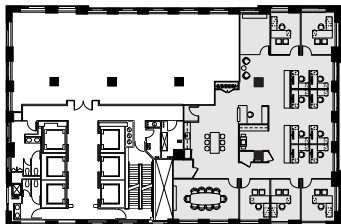
### Partial Floor Plans (Test Fit)

# 5,593 RSF

Pantry	1	Copy Area	1
Enclosed Collab Seats	14	Storage Room	1
Open Collab Seats	2		



Key Plan



712 5<sup>th</sup> Avenue  
New York, NY 10019  
[SevenTwelveFifth.com](http://SevenTwelveFifth.com)

**Peter Brindley**  
Executive Vice President,  
Head of Real Estate  
212 237 3156  
[pbrindley@pgre.com](mailto:pbrindley@pgre.com)

**Douglas Neye**  
Senior Vice President  
212 237 2976  
[dneye@pgre.com](mailto:dneye@pgre.com)

**Sean Kirk**  
Vice President  
212 237 3168  
[skirk@pgre.com](mailto:skirk@pgre.com)

  
**PARAMOUNT**  
GROUP

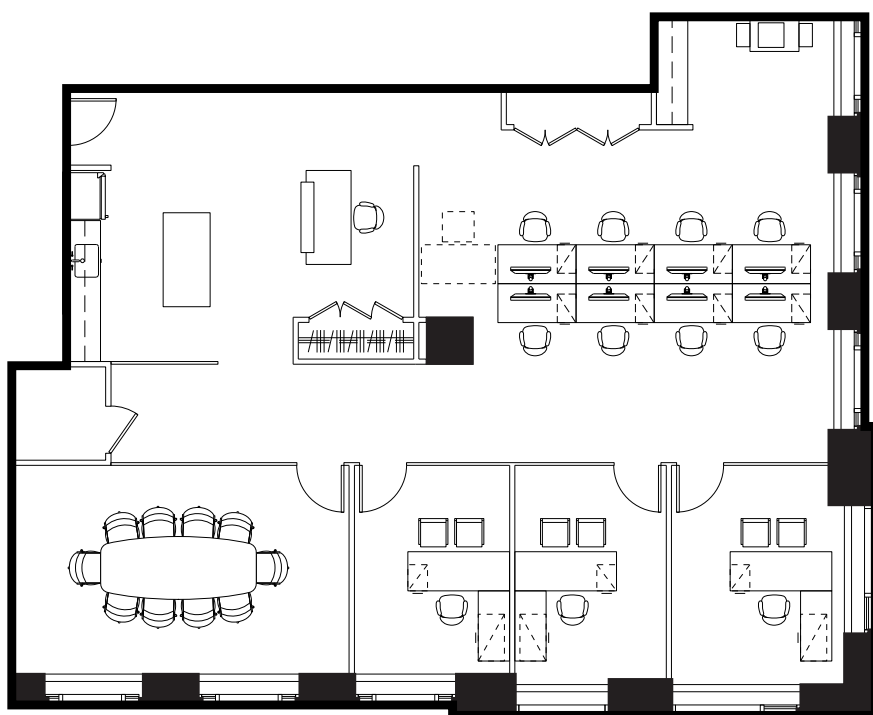
# Seven Twelve Fifth Avenue

## 30th Floor

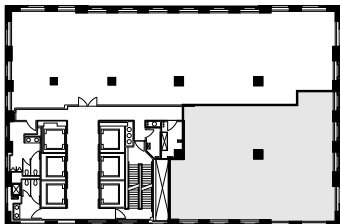
Partial Floor Plan (New Prebuilt)

# 3,797 RSF

Private Offices	3	Open Pantry	1
Workstations	8	Copy Area	1
Reception	1	Storage Room	1
Conference Room	1		



Key Plan



712 5<sup>th</sup> Avenue  
New York, NY 10019  
[SevenTwelveFifth.com](http://SevenTwelveFifth.com)

**Peter Brindley**  
Executive Vice President,  
Head of Real Estate  
212 237 3156  
[pbrindley@pgre.com](mailto:pbrindley@pgre.com)

**Douglas Neye**  
Senior Vice President  
212 237 2976  
[dneye@pgre.com](mailto:dneye@pgre.com)

**Sean Kirk**  
Vice President  
212 237 3168  
[skirk@pgre.com](mailto:skirk@pgre.com)

  
**PARAMOUNT**  
GROUP

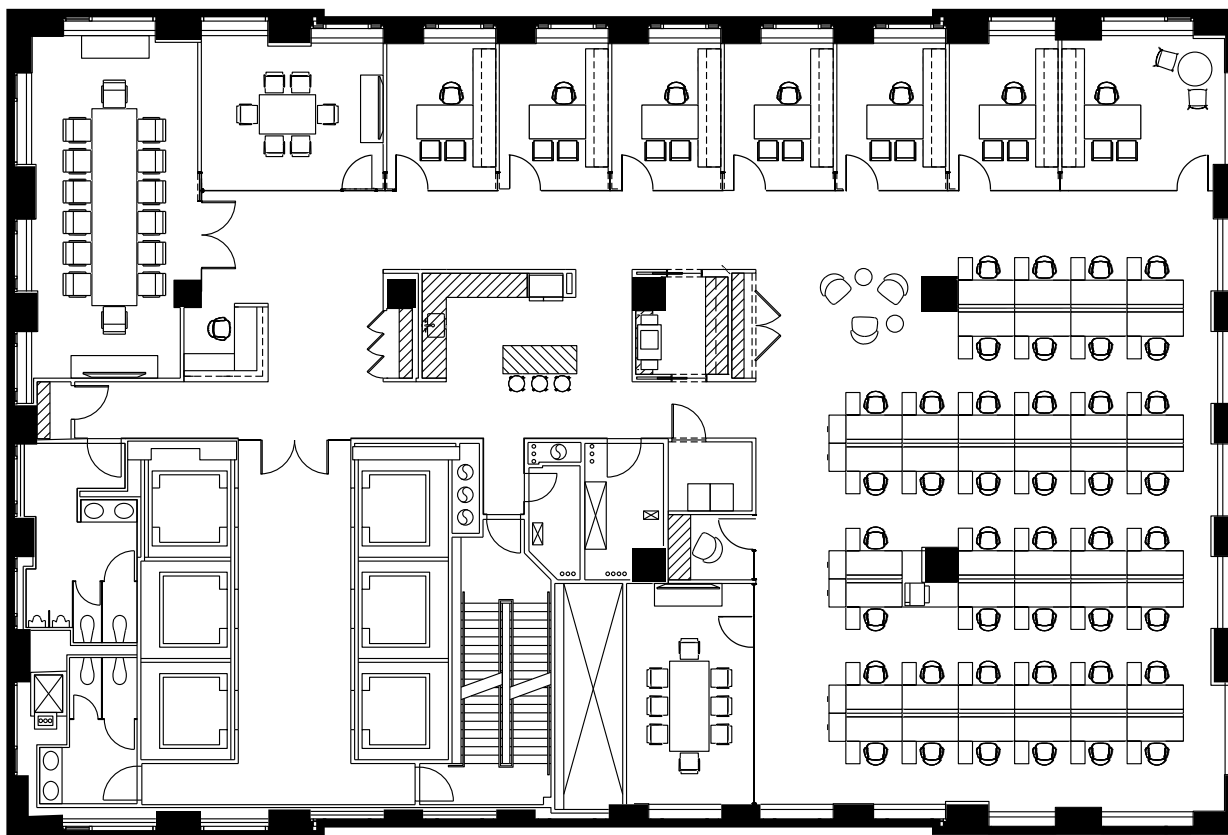
# Seven Twelve Fifth Avenue

## 24th Floor

Full Floor Plan (New Prebuilt)

# 9,734 RSF

Executive Office	1	Meeting Room	1
Private Offices	6	Pantry	1
Reception	1	Phone Room	1
Conference Rooms	2	Copy Room	1



712 5<sup>th</sup> Avenue  
New York, NY 10019

[SevenTwelveFifth.com](http://SevenTwelveFifth.com)

**Peter Brindley**  
Executive Vice President,  
Head of Real Estate  
212 237 3156  
[pbrindley@pgre.com](mailto:pbrindley@pgre.com)

**Douglas Neye**  
Senior Vice President  
212 237 2976  
[dneye@pgre.com](mailto:dneye@pgre.com)

**Sean Kirk**  
Vice President  
212 237 3168  
[skirk@pgre.com](mailto:skirk@pgre.com)

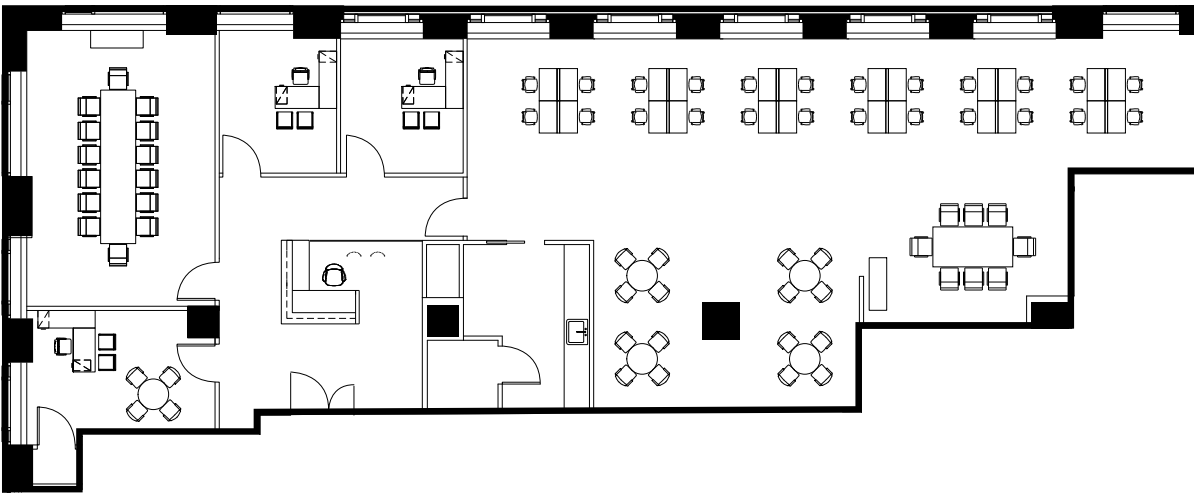
  
**PARAMOUNT**  
GROUP

# Seven Twelve Fifth Avenue

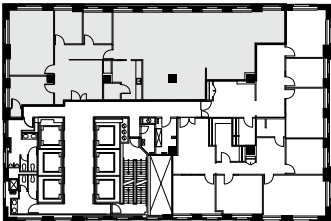
## 22nd Floor

Partial Floor Plan (New Prebuilt)

# 4,845 RSF



Key Plan



712 5<sup>th</sup> Avenue  
New York, NY 10019  
[SevenTwelveFifth.com](http://SevenTwelveFifth.com)

**Peter Brindley**  
Executive Vice President,  
Head of Real Estate  
212 237 3156  
[pbrindley@pgre.com](mailto:pbrindley@pgre.com)

**Douglas Neye**  
Senior Vice President  
212 237 2976  
[dneye@pgre.com](mailto:dneye@pgre.com)

**Sean Kirk**  
Vice President  
212 237 3168  
[skirk@pgre.com](mailto:skirk@pgre.com)

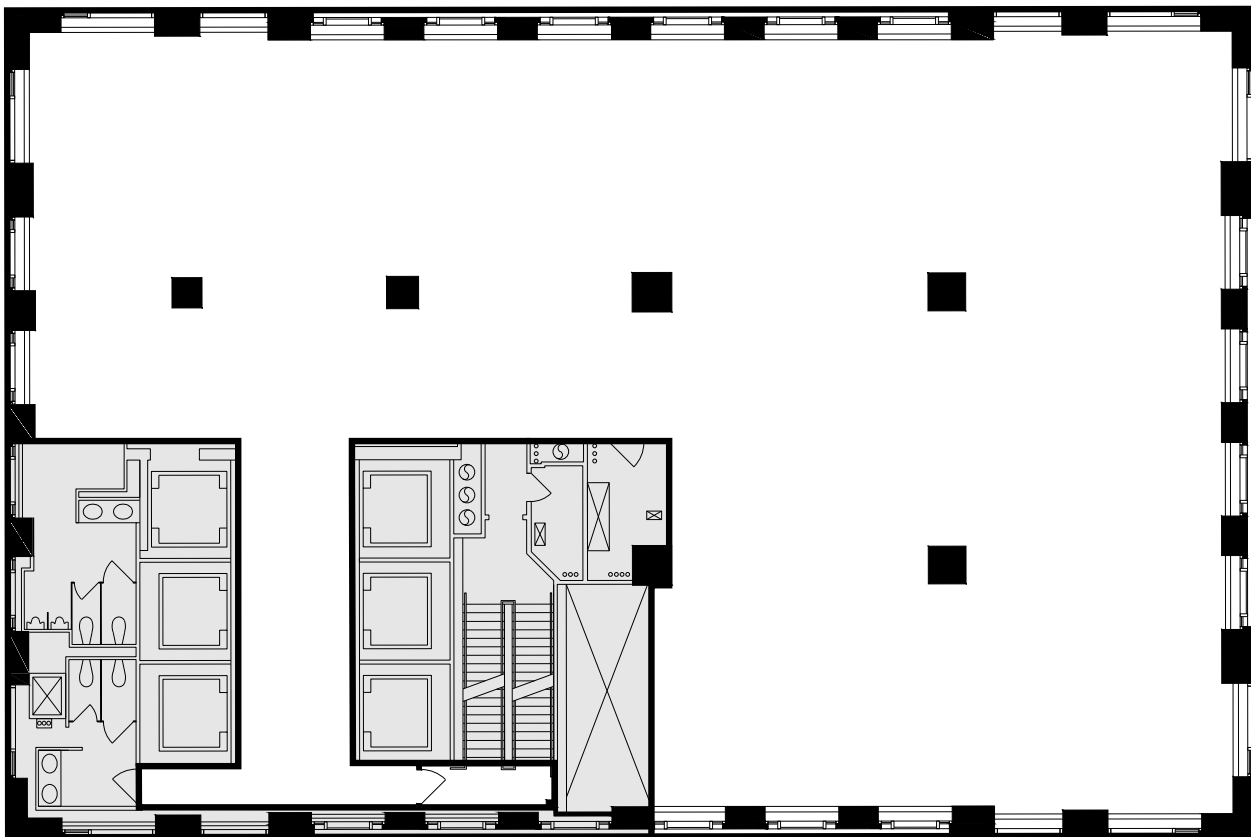
  
**PARAMOUNT**  
GROUP

# Seven Twelve Fifth Avenue

20th  
Floor

Full Floor Core Plan

9,697 RSF



712 5<sup>th</sup> Avenue  
New York, NY 10019  
[SevenTwelveFifth.com](http://SevenTwelveFifth.com)

**Peter Brindley**  
Executive Vice President,  
Head of Real Estate  
212 237 3156  
[pbrindley@pgre.com](mailto:pbrindley@pgre.com)

**Douglas Neye**  
Senior Vice President  
212 237 2976  
[dneye@pgre.com](mailto:dneye@pgre.com)

**Sean Kirk**  
Vice President  
212 237 3168  
[skirk@pgre.com](mailto:skirk@pgre.com)

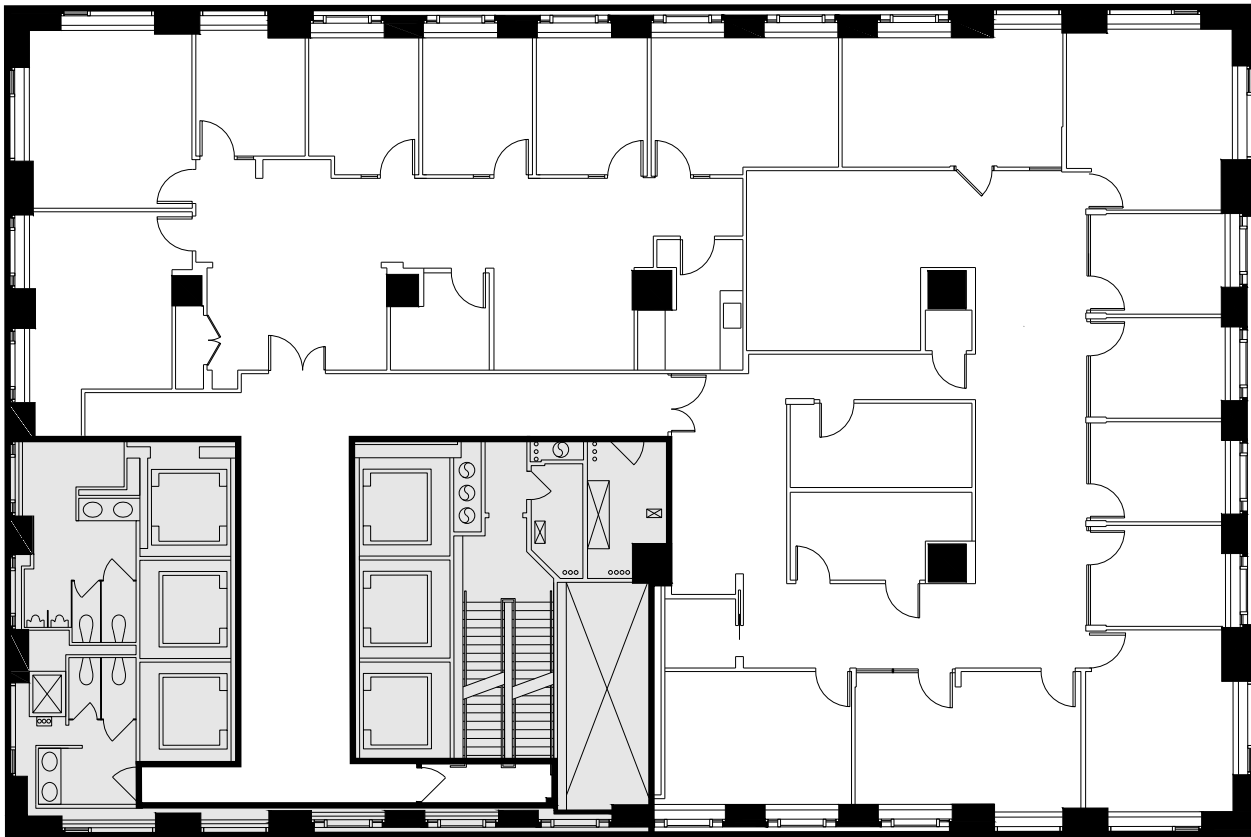
  
**PARAMOUNT**  
GROUP

# Seven Twelve Fifth Avenue

19th  
Floor

Entire Floor Plan

9,697 RSF



712 5<sup>th</sup> Avenue  
New York, NY 10019  
[SevenTwelveFifth.com](http://SevenTwelveFifth.com)

**Peter Brindley**  
Executive Vice President,  
Head of Real Estate  
212 237 3156  
[pbrindley@pgre.com](mailto:pbrindley@pgre.com)

**Douglas Neye**  
Senior Vice President  
212 237 2976  
[dneye@pgre.com](mailto:dneye@pgre.com)

**Sean Kirk**  
Vice President  
212 237 3168  
[skirk@pgre.com](mailto:skirk@pgre.com)

  
**PARAMOUNT**  
GROUP

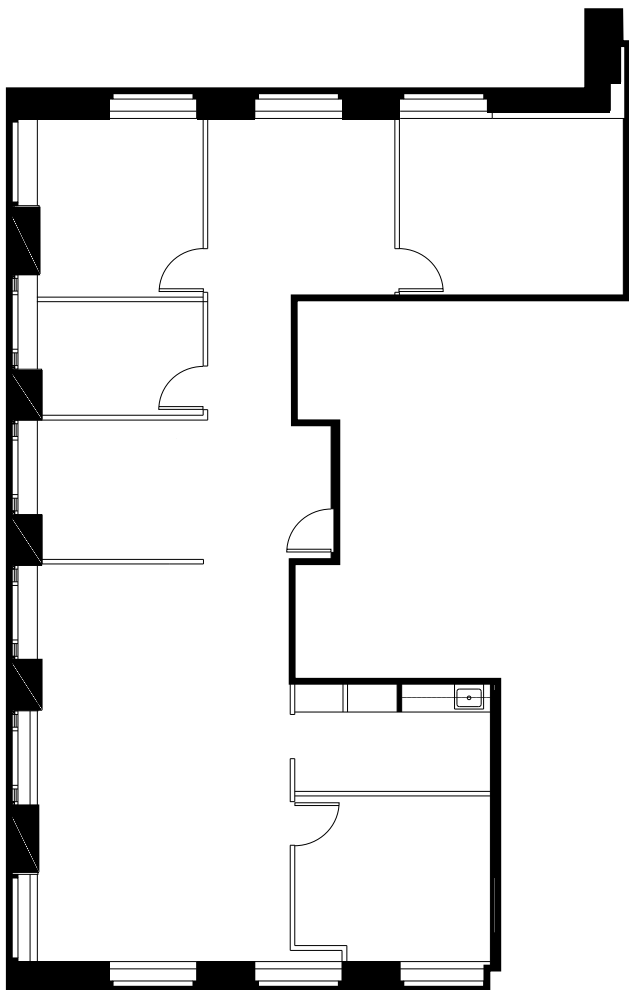


# Seven Twelve Fifth Avenue

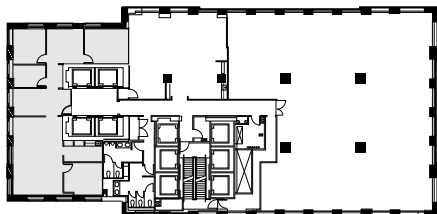
## 8th Floor

Partial Floor Plan

# 3,205 RSF



Key Plan



712 5<sup>th</sup> Avenue  
New York, NY 10019  
[SevenTwelveFifth.com](http://SevenTwelveFifth.com)

**Peter Brindley**  
Executive Vice President,  
Head of Real Estate  
212 237 3156  
[pbrindley@pgre.com](mailto:pbrindley@pgre.com)

**Douglas Neye**  
Senior Vice President  
212 237 2976  
[dneye@pgre.com](mailto:dneye@pgre.com)

**Sean Kirk**  
Vice President  
212 237 3168  
[skirk@pgre.com](mailto:skirk@pgre.com)

  
**PARAMOUNT**  
GROUP