

Floor Availability

As of May 2023

All units are available immediately unless dated below.

Seven Twelve Fifth Avenue

Boutique Floor Plates
Each full floor comprises +/- 9,800 RSF
with partial to full floors available.

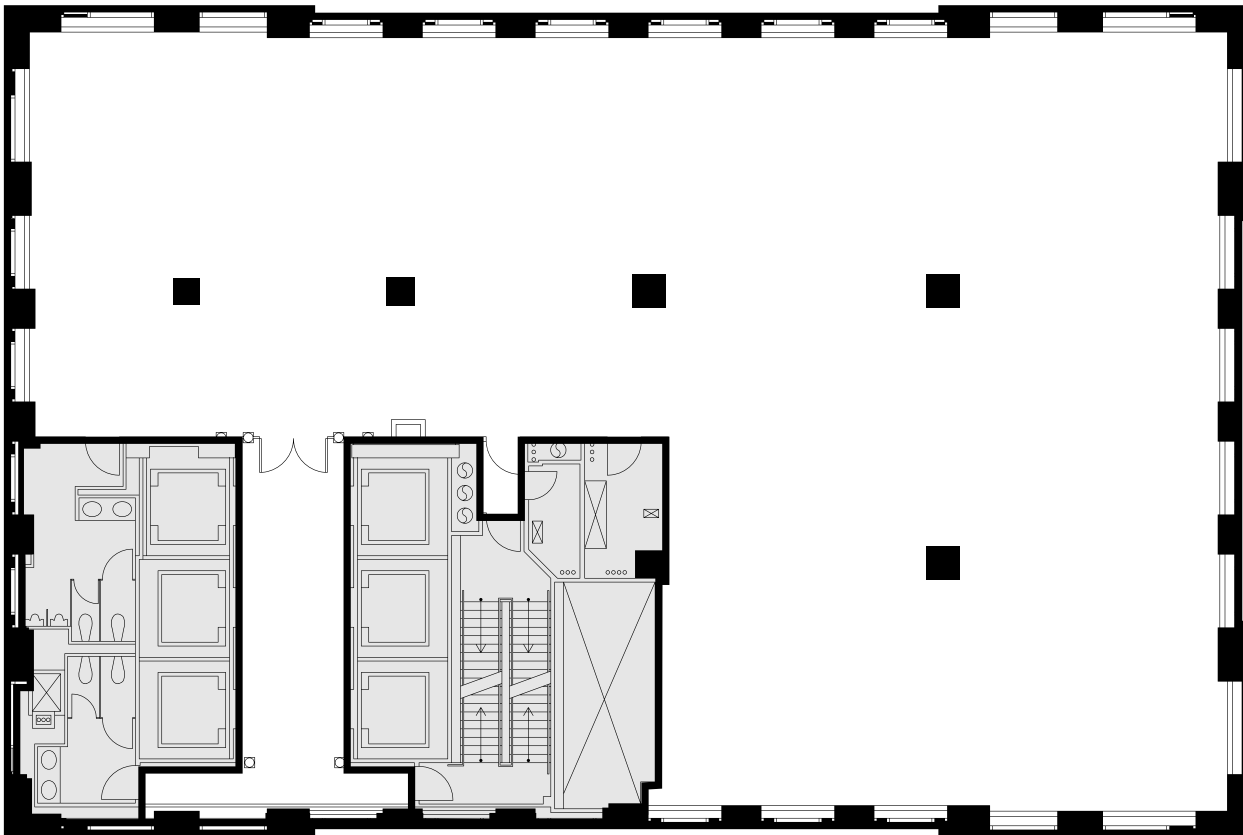
| | |
|----|------------------------------|
| 48 | 9,866 RSF |
| 46 | 9,866 RSF |
| 45 | 2,306 RSF |
| 38 | 7,102 RSF |
| 33 | 4,133 RSF |
| 32 | 5,593 RSF |
| 28 | 3,028 RSF |
| 24 | 9,734 RSF |
| 22 | 4,845 RSF |
| 20 | 9,697 RSF |
| 19 | Available 9/1/2023 9,697 RSF |
| 8 | Available 2/1/2024 3,205 RSF |

Seven Twelve Fifth Avenue

Full Floor Core Plan

Representative Full Floor Plan

+/- 9,800 RSF



712 5th Avenue
New York, NY 10019

SevenTwelveFifth.com

Peter Brindley
Executive Vice President,
Head of Real Estate
212 237 3156
pbrindley@pgre.com

Douglas Neye
Senior Vice President
212 237 2976
dneye@pgre.com

Sean Kirk
Vice President
212 237 3168
skirk@pgre.com


PARAMOUNT
GROUP

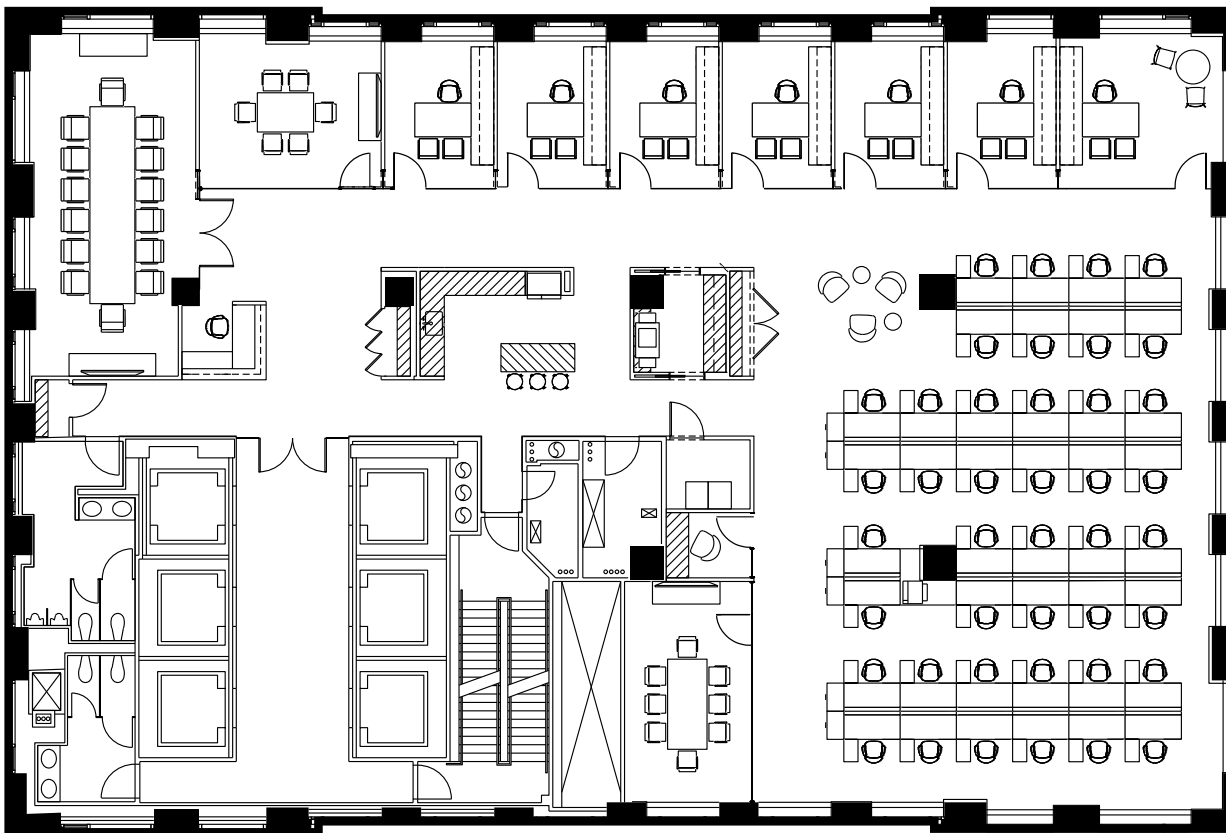
Seven Twelve Fifth Avenue

Open Plan

Representative Full Floor Plan

+/- 9,800 RSF

| | | | |
|------------------|---|--------------|---|
| Executive Office | 1 | Meeting Room | 1 |
| Private Offices | 6 | Pantry | 1 |
| Reception | 1 | Phone Room | 1 |
| Conference Rooms | 2 | Copy Room | 1 |



712 5th Avenue
New York, NY 10019

SevenTwelveFifth.com

Peter Brindley
Executive Vice President,
Head of Real Estate
212 237 3156
pbrindley@pgre.com

Douglas Neye
Senior Vice President
212 237 2976
dneye@pgre.com

Sean Kirk
Vice President
212 237 3168
skirk@pgre.com


PARAMOUNT
GROUP

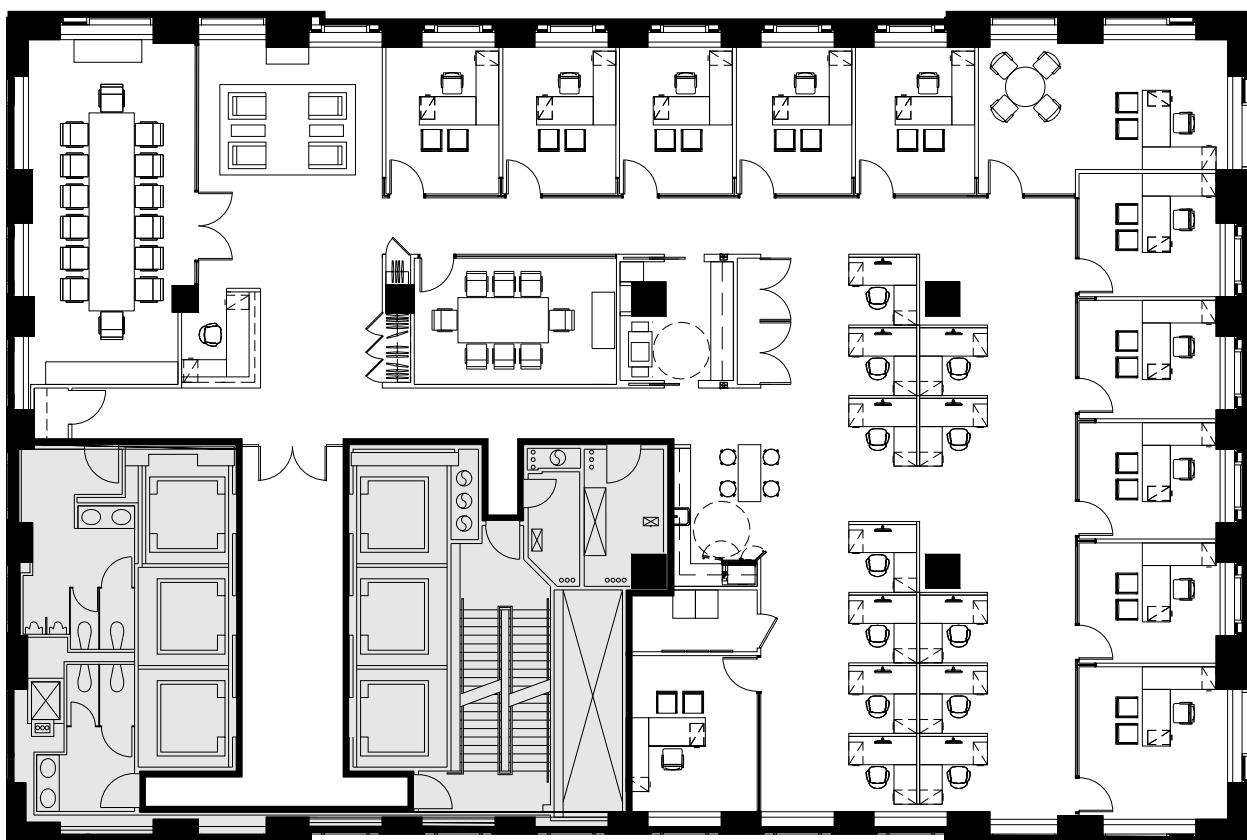
Seven Twelve Fifth Avenue

Office Plan

Representative Full Floor Plan

+/- 9,800 RSF

| | | | | | |
|------------------|----|-----------------|---|-------------|---|
| Executive Office | 1 | Board Room | 1 | Open Pantry | 1 |
| Private Offices | 11 | Conference Room | 1 | Copy Area | 1 |
| Workstations | 12 | Cafe | 1 | Coat Rooms | 3 |
| Reception | 1 | IT Room | 1 | | |



712 5th Avenue
New York, NY 10019
SevenTwelveFifth.com

Peter Brindley
Executive Vice President,
Head of Real Estate
212 237 3156
pbrindley@pgre.com

Douglas Neye
Senior Vice President
212 237 2976
dneye@pgre.com

Sean Kirk
Vice President
212 237 3168
skirk@pgre.com

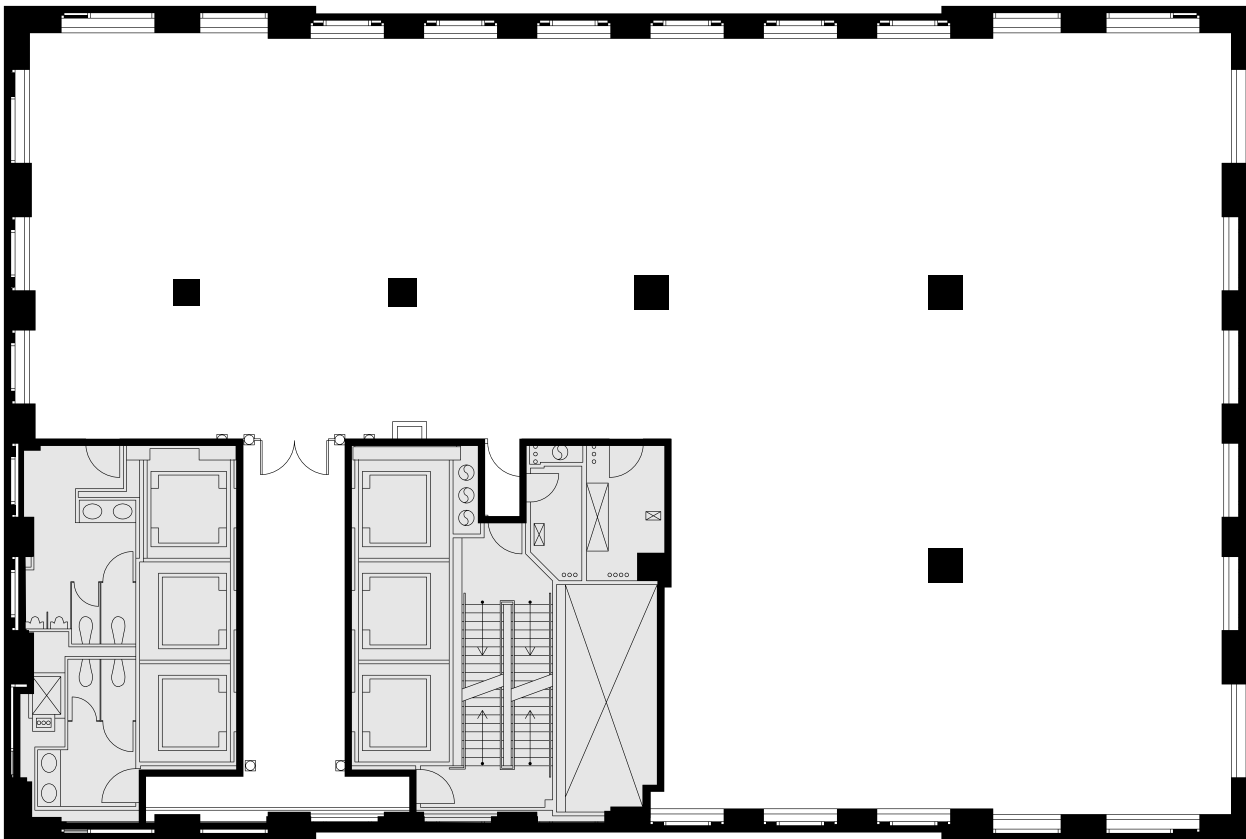

PARAMOUNT
GROUP

Seven Twelve Fifth Avenue

48th
Floor

Full Floor Core Plan

9,833 RSF



712 5th Avenue
New York, NY 10019
SevenTwelveFifth.com

Peter Brindley
Executive Vice President,
Head of Real Estate
212 237 3156
pbrindley@pgre.com

Douglas Neye
Senior Vice President
212 237 2976
dneye@pgre.com

Sean Kirk
Vice President
212 237 3168
skirk@pgre.com

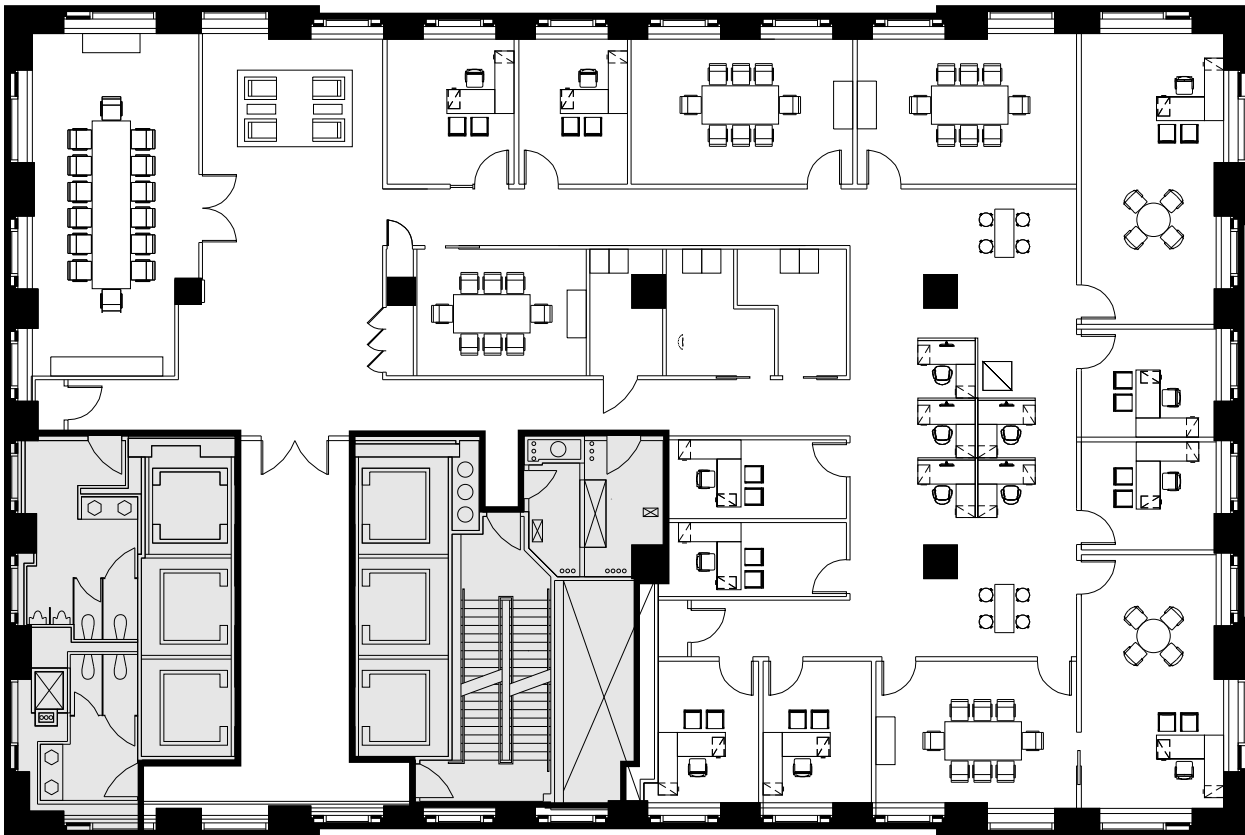

PARAMOUNT
GROUP

Seven Twelve Fifth Avenue

46th Floor

Full Floor Plan Existing Conditions

9,866 RSF



712 5th Avenue
New York, NY 10019

SevenTwelveFifth.com

Peter Brindley
Executive Vice President,
Head of Real Estate
212 237 3156
pbrindley@pgre.com

Douglas Neye
Senior Vice President
212 237 2976
dneye@pgre.com

Sean Kirk
Vice President
212 237 3168
skirk@pgre.com

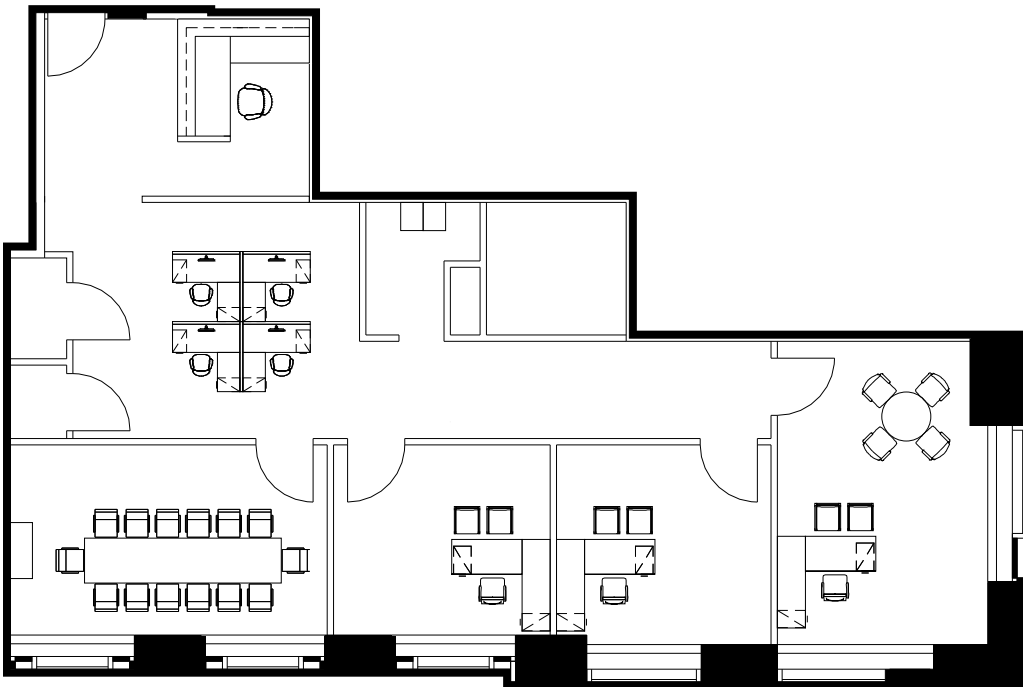

PARAMOUNT
GROUP

Seven Twelve Fifth Avenue

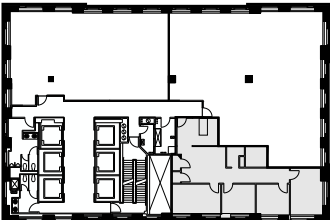
45th Floor

Partial Floor Plan (As Built)

2,306 RSF



Key Plan



712 5th Avenue
New York, NY 10019
SevenTwelveFifth.com

Peter Brindley
Executive Vice President,
Head of Real Estate
212 237 3156
pbrindley@pgre.com

Douglas Neye
Senior Vice President
212 237 2976
dneye@pgre.com

Sean Kirk
Vice President
212 237 3168
skirk@pgre.com


PARAMOUNT
GROUP

Seven Twelve Fifth Avenue

38th Floor

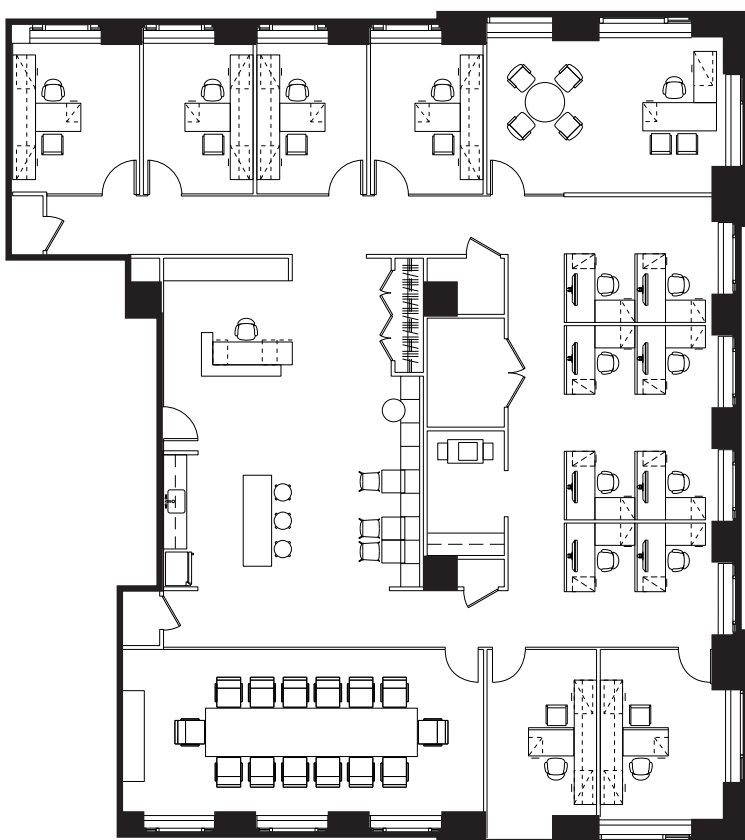
Partial Floor Plans (Test Fit)

7,102 RSF

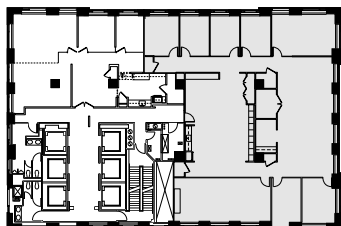
| | |
|------------------|---|
| Executive Office | 1 |
| Private Offices | 6 |
| Workstations | 8 |
| Reception | 1 |

| | |
|-----------------------|----|
| Conference Room | 1 |
| Pantry | 1 |
| Enclosed Collab Seats | 14 |
| Open Collab Seats | 9 |

| | |
|---------------|---|
| Copy Area | 1 |
| Storage Room | 4 |
| Computer Room | 1 |



Key Plan



712 5th Avenue
New York, NY 10019

SevenTwelveFifth.com

Peter Brindley
Executive Vice President,
Head of Real Estate
212 237 3156
pbrindley@pgre.com

Douglas Neye
Senior Vice President
212 237 2976
dneye@pgre.com

Sean Kirk
Vice President
212 237 3168
skirk@pgre.com


PARAMOUNT
GROUP

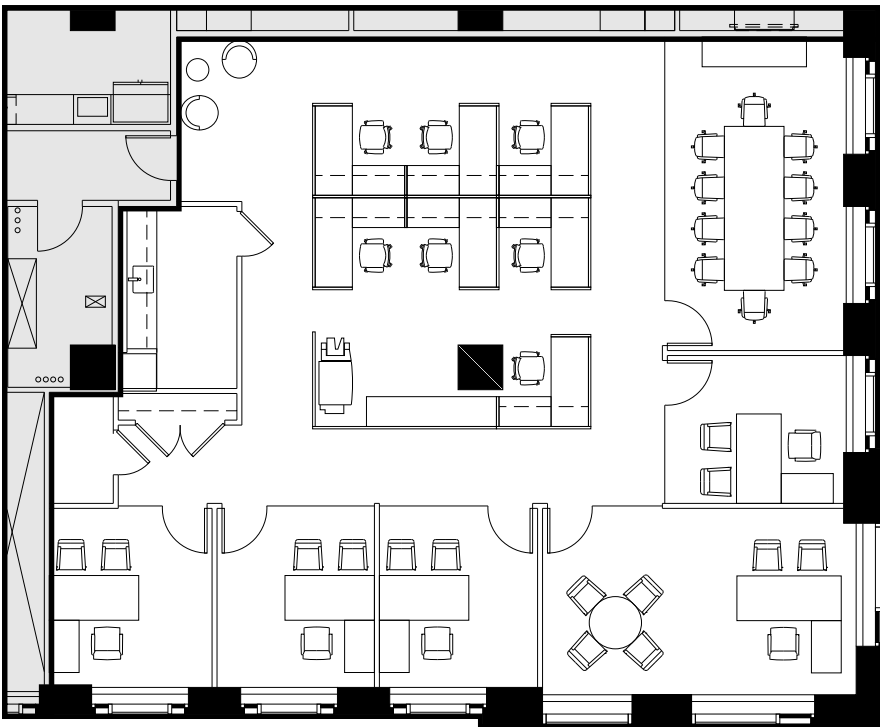
Seven Twelve Fifth Avenue

33rd Floor

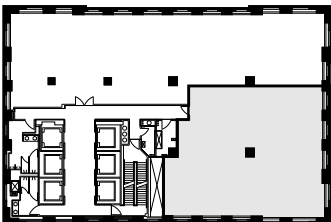
Partial Floor Plan (New Prebuilt)

4,133 RSF

| | | | | | |
|------------------|---|-----------------|---|--------------|---|
| Executive Office | 1 | Conference Room | 1 | Copy Area | 1 |
| Private Offices | 4 | IT Room | 1 | Storage Room | 1 |
| Workstations | 7 | Open Pantry | 1 | | |



Key Plan



712 5th Avenue
New York, NY 10019
SevenTwelveFifth.com

Peter Brindley
Executive Vice President,
Head of Real Estate
212 237 3156
pbrindley@pgre.com

Douglas Neye
Senior Vice President
212 237 2976
dneye@pgre.com

Sean Kirk
Vice President
212 237 3168
skirk@pgre.com


PARAMOUNT
GROUP

Seven Twelve Fifth Avenue

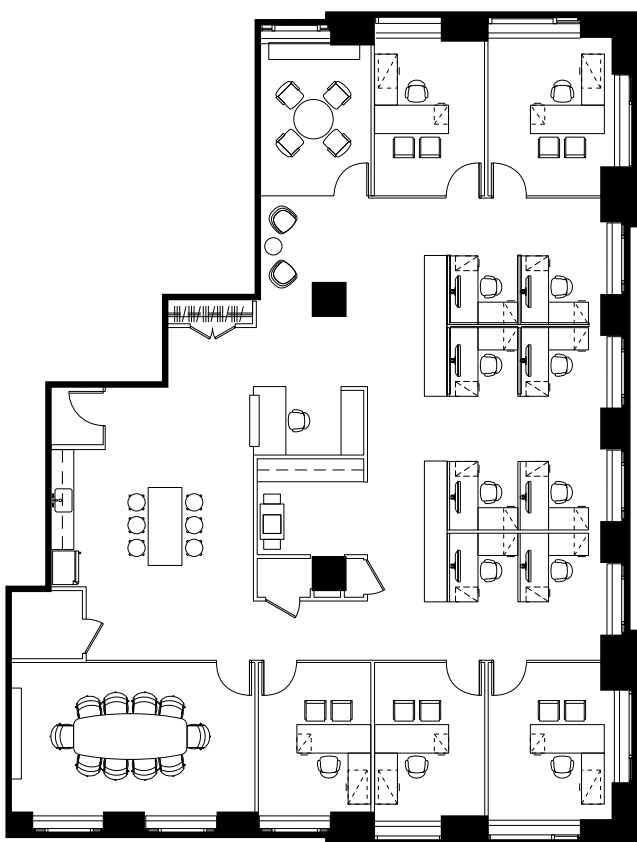
32nd Floor

| | |
|-----------------|---|
| Private Offices | 5 |
| Workstations | 8 |
| Reception | 1 |
| Conference Room | 1 |

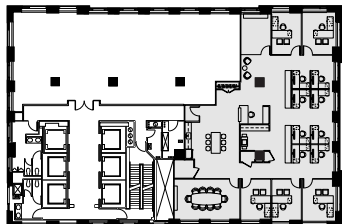
Partial Floor Plans (Test Fit)

5,593 RSF

| | | | |
|-----------------------|----|--------------|---|
| Pantry | 1 | Copy Area | 1 |
| Enclosed Collab Seats | 14 | Storage Room | 1 |
| Open Collab Seats | 2 | | |



Key Plan



712 5th Avenue
New York, NY 10019
SevenTwelveFifth.com

Peter Brindley
Executive Vice President,
Head of Real Estate
212 237 3156
pbrindley@pgre.com

Douglas Neye
Senior Vice President
212 237 2976
dneye@pgre.com

Sean Kirk
Vice President
212 237 3168
skirk@pgre.com


PARAMOUNT
GROUP

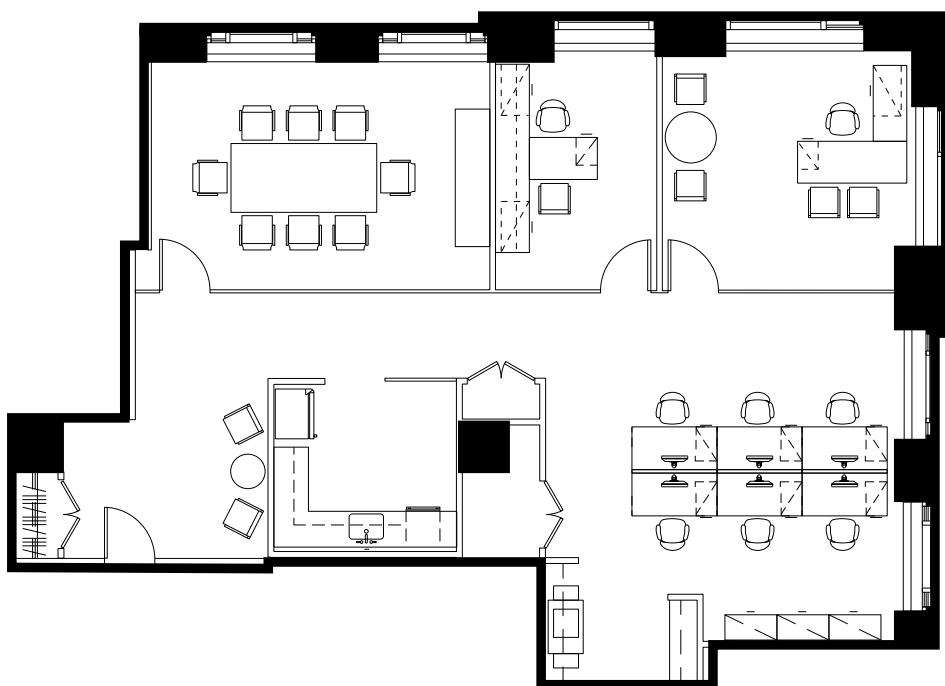
Seven Twelve Fifth Avenue

28th Floor

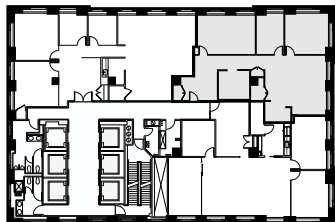
Partial Floor Plan (New Prebuilt)

3,028 RSF

| | | | |
|------------------|---|-------------|---|
| Executive Office | 1 | Open Pantry | 1 |
| Private Office | 1 | Copy Area | 1 |
| Conference Room | 1 | Coat Closet | 1 |
| Workstations | 6 | | |



Key Plan



712 5th Avenue
New York, NY 10019
SevenTwelveFifth.com

Peter Brindley
Executive Vice President,
Head of Real Estate
212 237 3156
pbrindley@pgre.com

Douglas Neye
Senior Vice President
212 237 2976
dneye@pgre.com

Sean Kirk
Vice President
212 237 3168
skirk@pgre.com


PARAMOUNT
GROUP

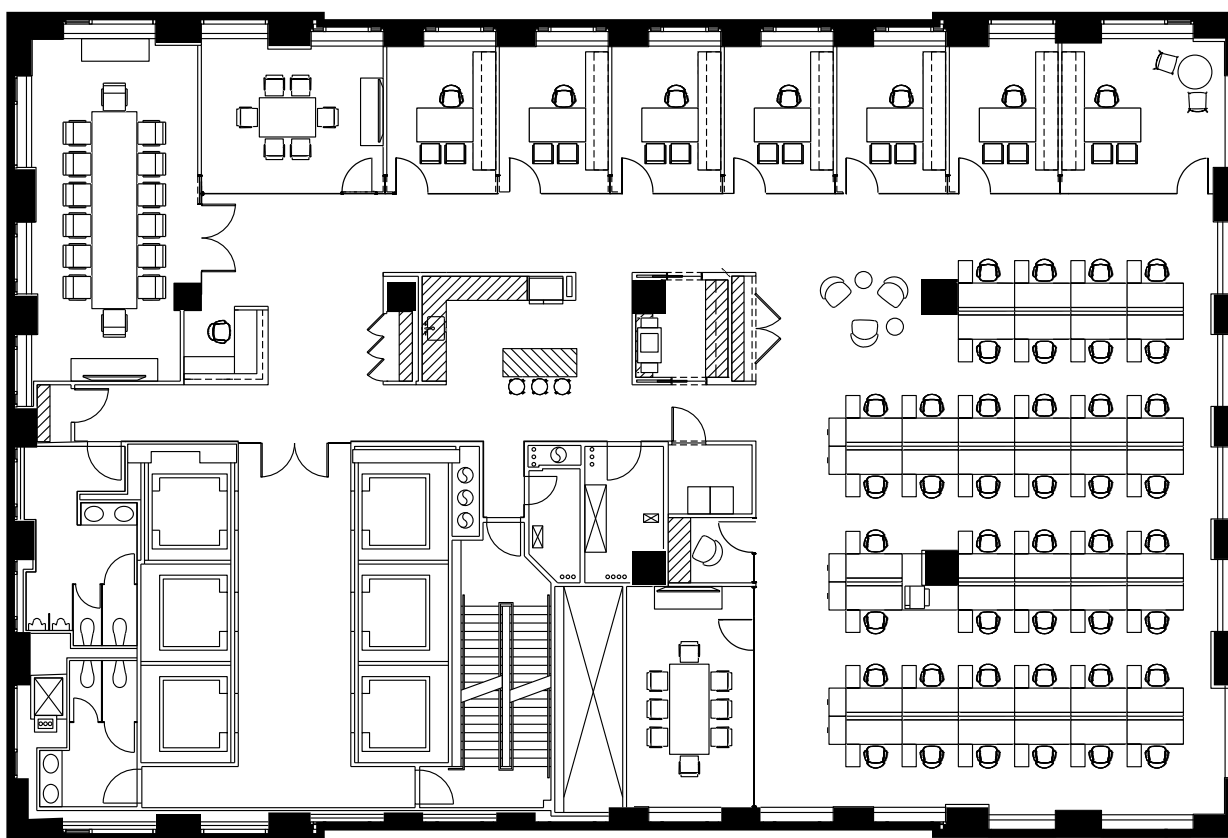
Seven Twelve Fifth Avenue

24th Floor

Full Floor Plan (New Prebuilt)

9,734 RSF

| | | | |
|------------------|---|--------------|---|
| Executive Office | 1 | Meeting Room | 1 |
| Private Offices | 6 | Pantry | 1 |
| Reception | 1 | Phone Room | 1 |
| Conference Rooms | 2 | Copy Room | 1 |

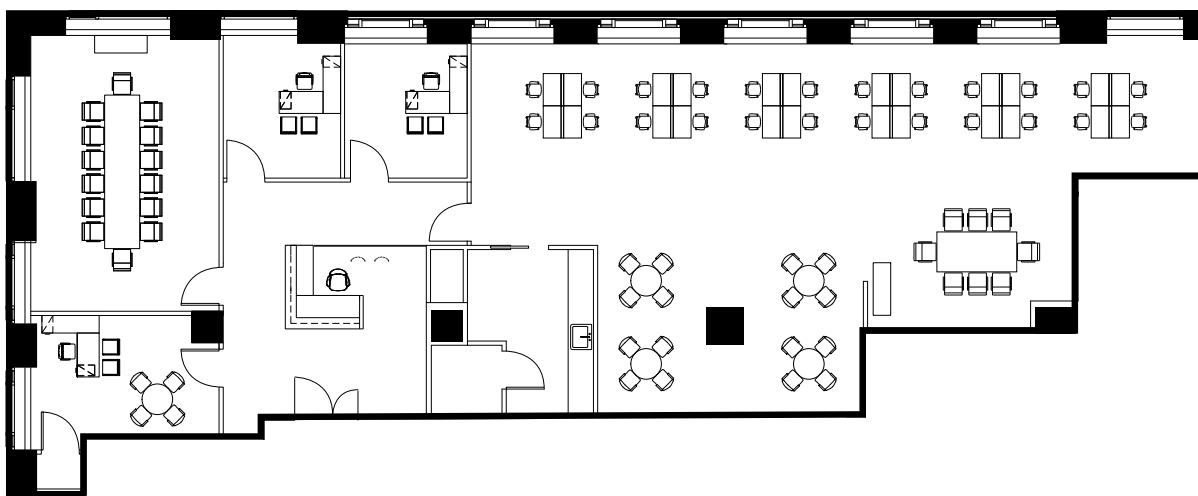


Seven Twelve Fifth Avenue

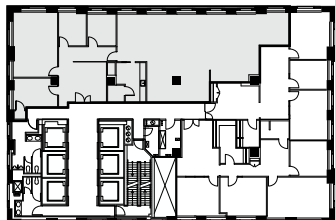
22nd Floor

Partial Floor Plan (New Prebuilt)

4,845 RSF



Key Plan



712 5th Avenue
New York, NY 10019
SevenTwelveFifth.com

Peter Brindley
Executive Vice President,
Head of Real Estate
212 237 3156
pbrindley@pgre.com

Douglas Neye
Senior Vice President
212 237 2976
dneye@pgre.com

Sean Kirk
Vice President
212 237 3168
skirk@pgre.com

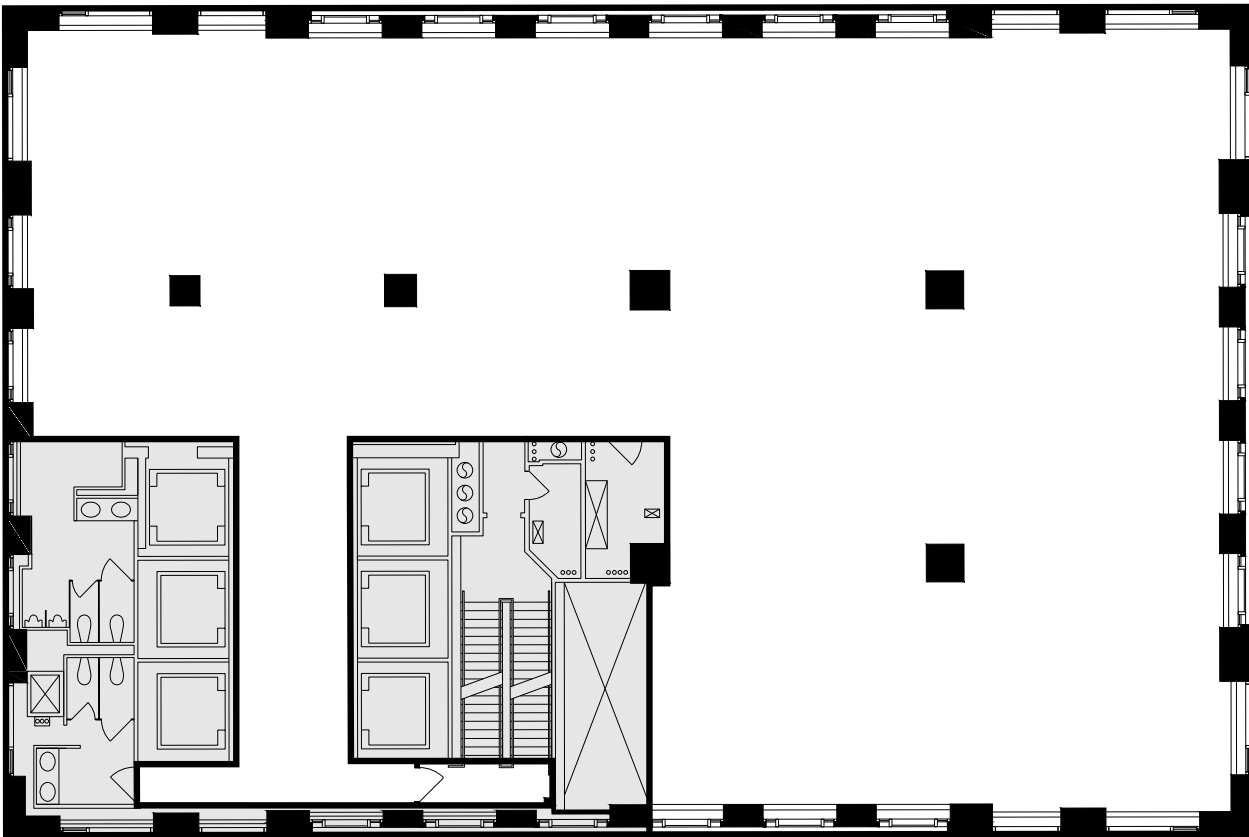

PARAMOUNT
GROUP

Seven Twelve Fifth Avenue

20th
Floor

Full Floor Core Plan

9,697 RSF



712 5th Avenue
New York, NY 10019
SevenTwelveFifth.com

Peter Brindley
Executive Vice President,
Head of Real Estate
212 237 3156
pbrindley@pgre.com

Douglas Neye
Senior Vice President
212 237 2976
dneye@pgre.com

Sean Kirk
Vice President
212 237 3168
skirk@pgre.com

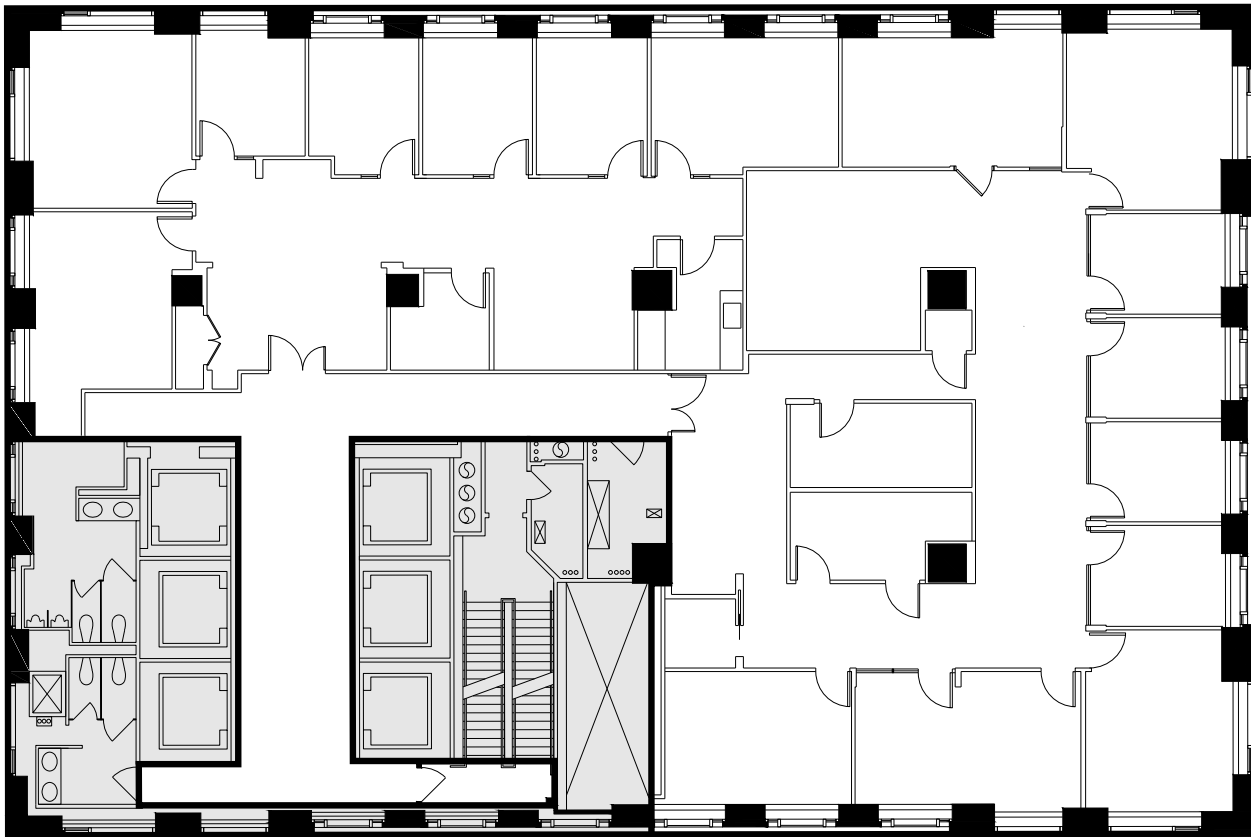

PARAMOUNT
GROUP

Seven Twelve Fifth Avenue

19th
Floor

Entire Floor Plan

9,697 RSF



712 5th Avenue
New York, NY 10019
SevenTwelveFifth.com

Peter Brindley
Executive Vice President,
Head of Real Estate
212 237 3156
pbrindley@pgre.com

Douglas Neye
Senior Vice President
212 237 2976
dneye@pgre.com

Sean Kirk
Vice President
212 237 3168
skirk@pgre.com

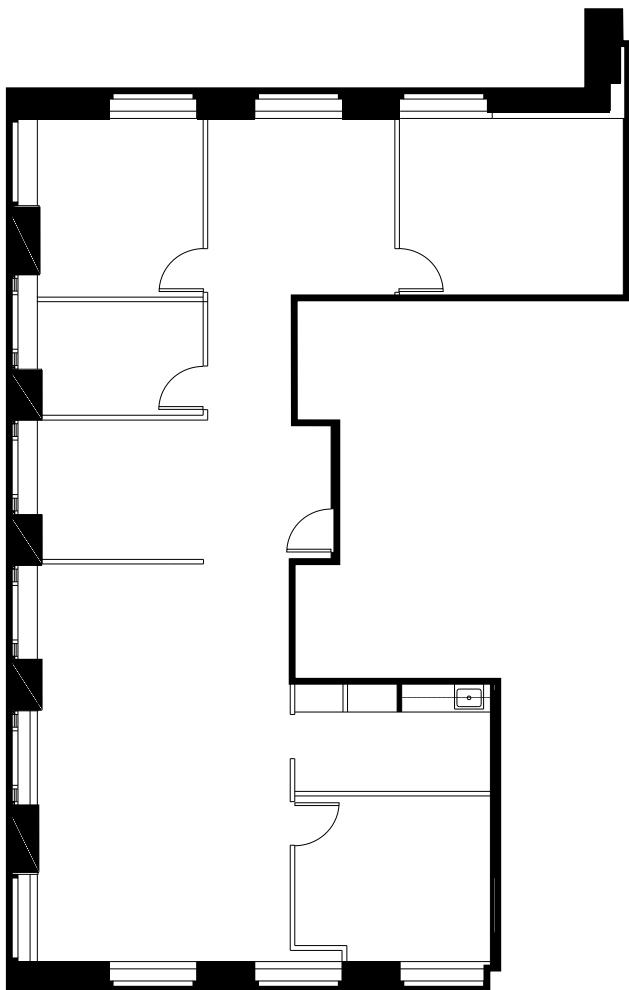

PARAMOUNT
GROUP

Seven Twelve Fifth Avenue

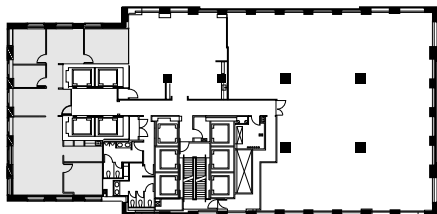
8th Floor

Partial Floor Plan

3,205 RSF



Key Plan



712 5th Avenue
New York, NY 10019

SevenTwelveFifth.com

Peter Brindley
Executive Vice President,
Head of Real Estate
212 237 3156
pbrindley@pgre.com

Douglas Neye
Senior Vice President
212 237 2976
dneye@pgre.com

Sean Kirk
Vice President
212 237 3168
skirk@pgre.com


PARAMOUNT
GROUP