

# Floor Availability

As of October 2022

All units are available immediately unless dated below.

# Seven Twelve Fifth Avenue

## Boutique Floor Plates

Each full floor comprises +/- 9,800 RSF  
with partial to full floors available.

48 9,866 RSF

46 9,866 RSF

45 2,306 RSF

33 Available 7/1/2023 4,133 RSF

32 4,220 RSF

30 9,813 RSF

28 3,028 RSF

24 9,734 RSF

22 Available 3/1/2023 4,845 RSF

21 3,153 RSF

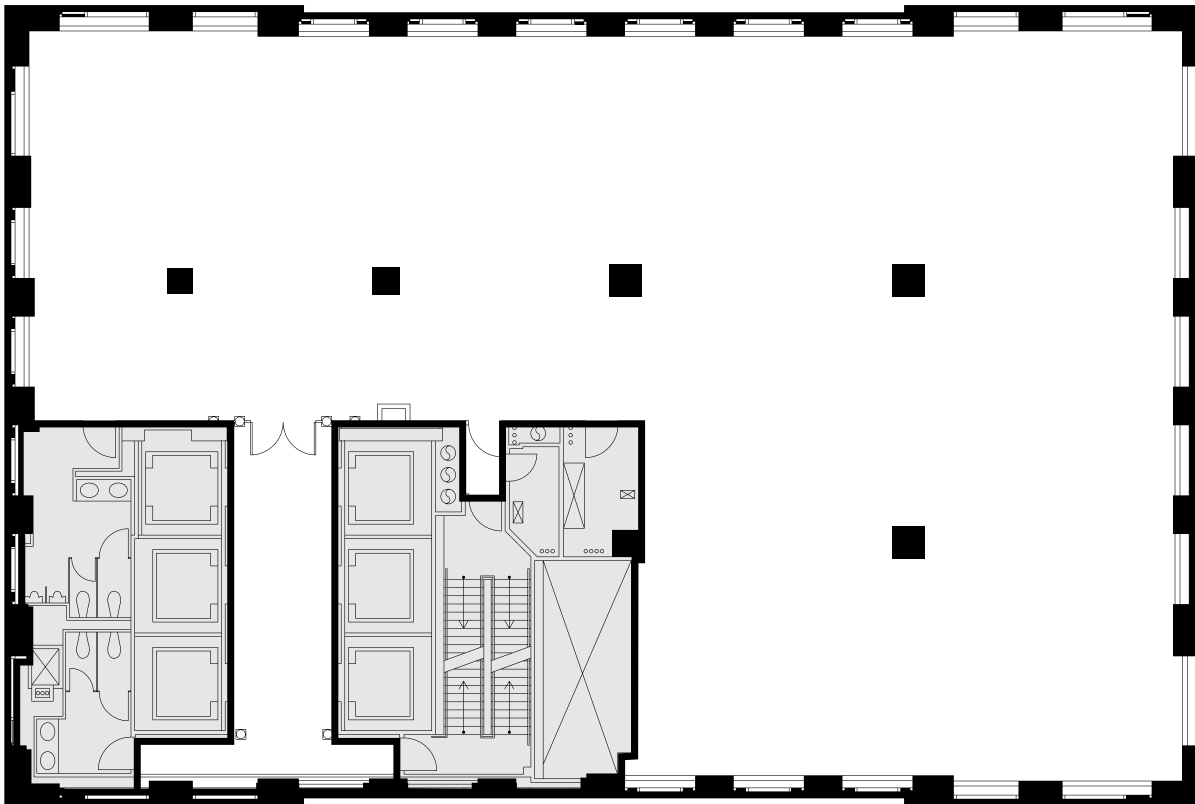
20 Available 12/1/2022 9,697 RSF

# Seven Twelve Fifth Avenue

## Full Floor Core Plan

Representative Full Floor Plan

# +/- 9,800 RSF



712 5<sup>th</sup> Avenue  
New York, NY 10019

[SevenTwelveFifth.com](http://SevenTwelveFifth.com)

**Peter Brindley**  
Executive Vice President,  
Head of Real Estate  
212 237 3156  
[pbrindley@pgre.com](mailto:pbrindley@pgre.com)

**Douglas Neye**  
Senior Vice President  
212 237 2976  
[dneye@pgre.com](mailto:dneye@pgre.com)

**Sean Kirk**  
Assistant Vice President – Leasing  
212 237 3168  
[skirk@pgre.com](mailto:skirk@pgre.com)

  
**PARAMOUNT**  
GROUP

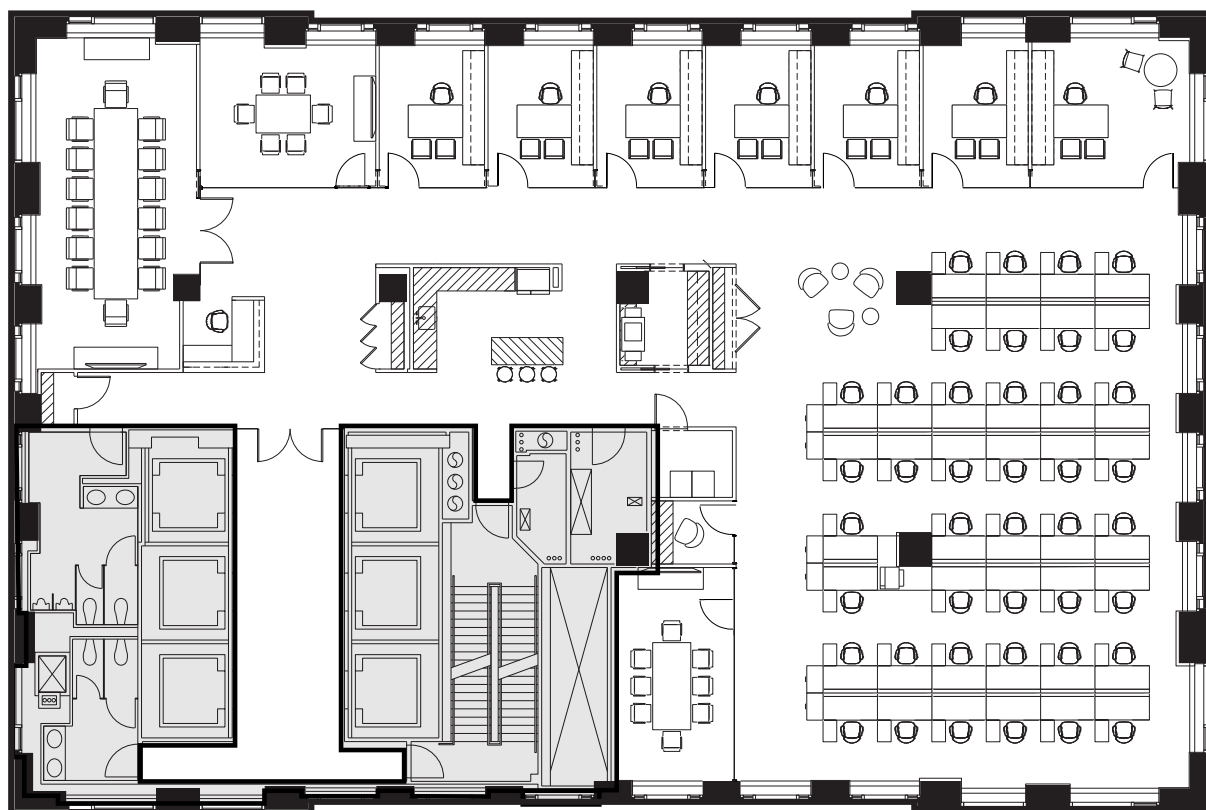
# Seven Twelve Fifth Avenue

## Open Plan

### Representative Full Floor Plan

# +/- 9,800 RSF

Executive Office	1	Meeting Room	1
Private Offices	6	Pantry	1
Reception	1	Phone Room	1
Conference Rooms	2	Copy Room	1



712 5<sup>th</sup> Avenue  
New York, NY 10019  
[SevenTwelveFifth.com](http://SevenTwelveFifth.com)

**Peter Brindley**  
Executive Vice President,  
Head of Real Estate  
212 237 3156  
[pbrindley@pgre.com](mailto:pbrindley@pgre.com)

**Douglas Neye**  
Senior Vice President  
212 237 2976  
[dneye@pgre.com](mailto:dneye@pgre.com)

**Sean Kirk**  
Assistant Vice President – Leasing  
212 237 3168  
[skirk@pgre.com](mailto:skirk@pgre.com)

  
**PARAMOUNT**  
GROUP

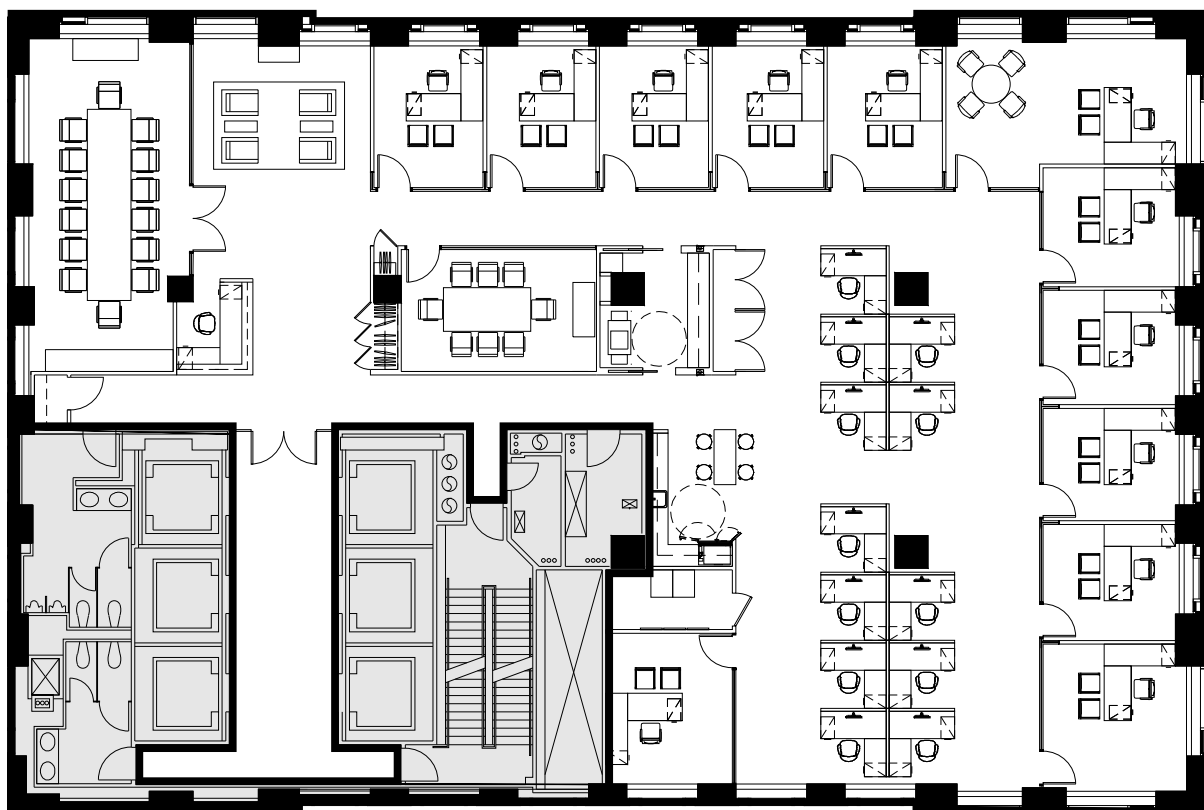
# Seven Twelve Fifth Avenue

## Office Plan

Representative Full Floor Plan

# +/- 9,800 RSF

Executive Office	1	Board Room	1	Open Pantry	1
Private Offices	11	Conference Room	1	Copy Area	1
Workstations	12	Cafe	1	Coat Rooms	3
Reception	1	IT Room	1		



712 5<sup>th</sup> Avenue  
New York, NY 10019  
[SevenTwelveFifth.com](http://SevenTwelveFifth.com)

**Peter Brindley**  
Executive Vice President,  
Head of Real Estate  
212 237 3156  
[pbrindley@pgre.com](mailto:pbrindley@pgre.com)

**Douglas Neye**  
Senior Vice President  
212 237 2976  
[dneye@pgre.com](mailto:dneye@pgre.com)

**Sean Kirk**  
Assistant Vice President – Leasing  
212 237 3168  
[skirk@pgre.com](mailto:skirk@pgre.com)

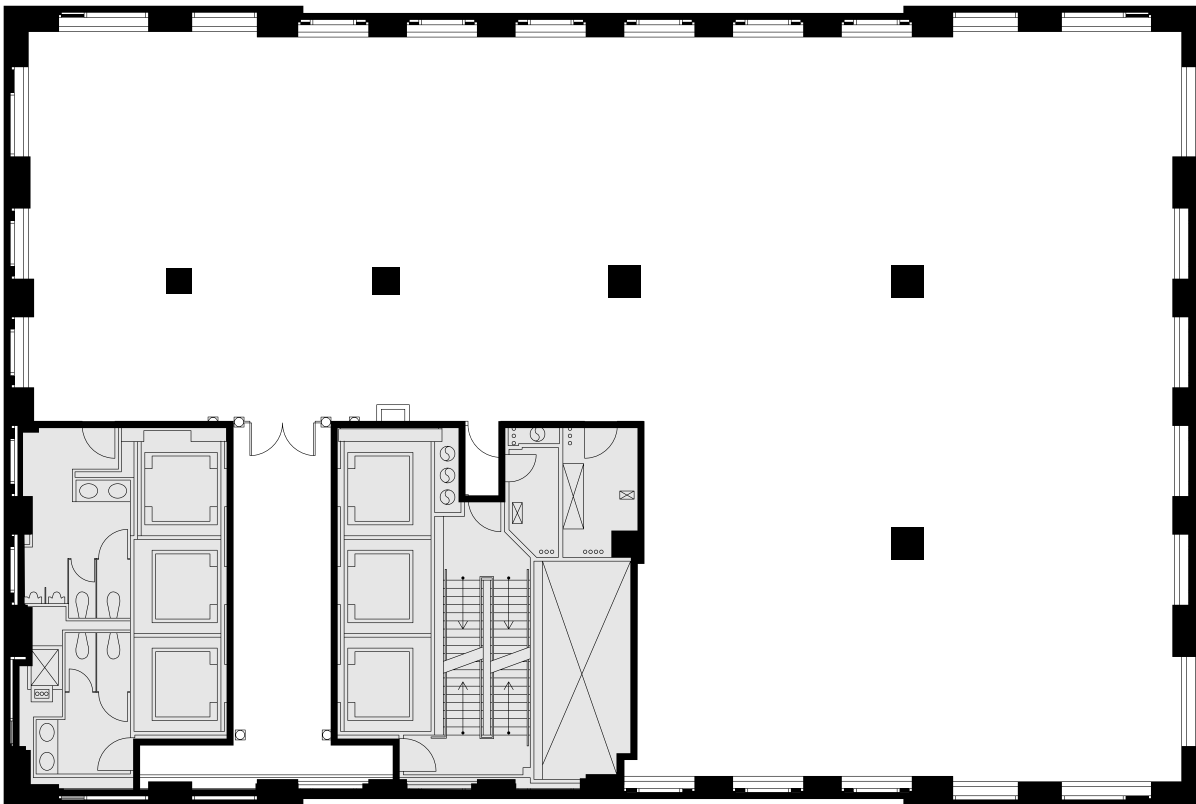
  
**PARAMOUNT**  
GROUP

# Seven Twelve Fifth Avenue

48th  
Floor

Full Floor Core Plan

9,833 RSF



712 5<sup>th</sup> Avenue  
New York, NY 10019  
[SevenTwelveFifth.com](http://SevenTwelveFifth.com)

**Peter Brindley**  
Executive Vice President,  
Head of Real Estate  
212 237 3156  
[pbrindley@pgre.com](mailto:pbrindley@pgre.com)

**Douglas Neye**  
Senior Vice President  
212 237 2976  
[dneye@pgre.com](mailto:dneye@pgre.com)

**Sean Kirk**  
Assistant Vice President – Leasing  
212 237 3168  
[skirk@pgre.com](mailto:skirk@pgre.com)

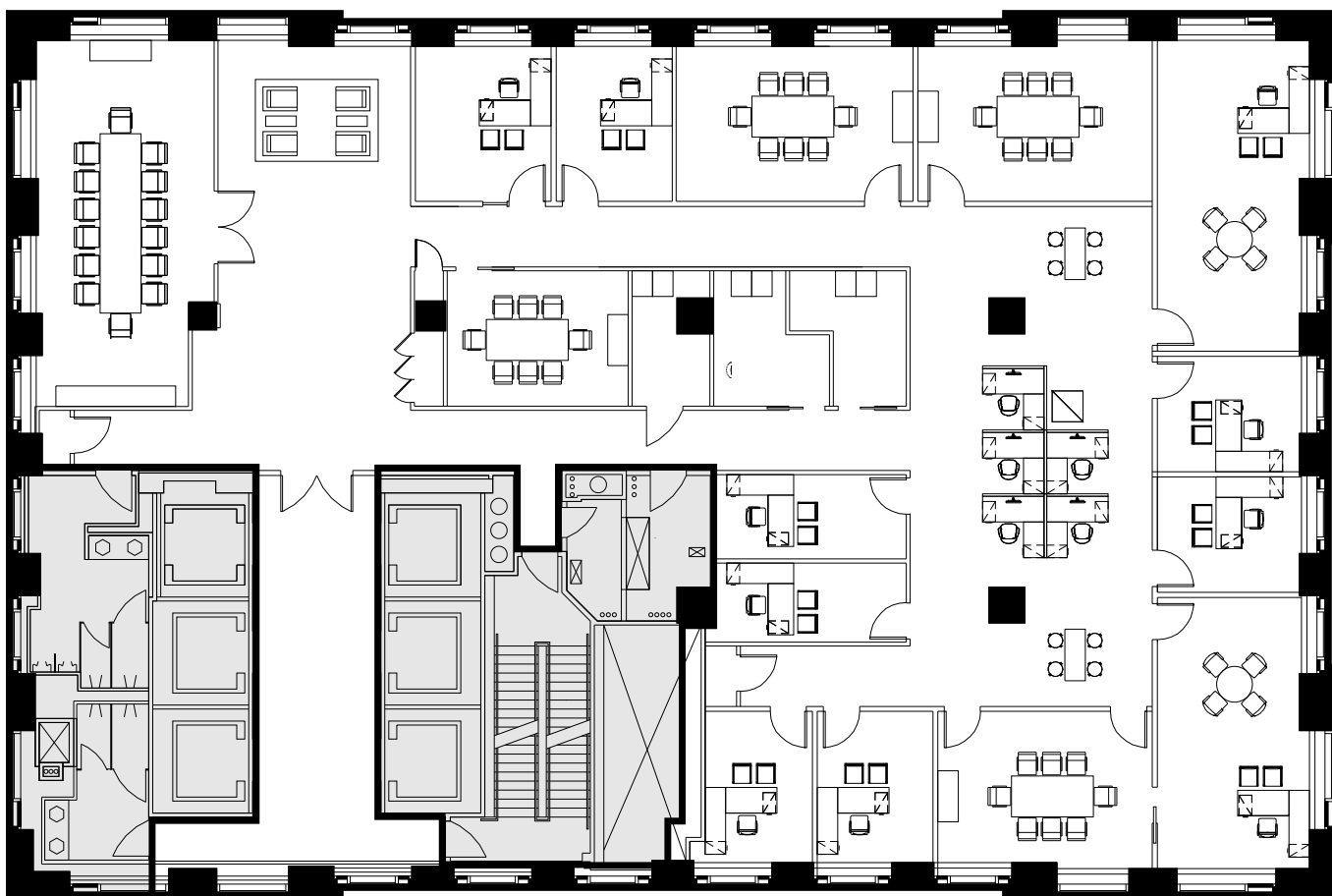
  
**PARAMOUNT**  
GROUP

# Seven Twelve Fifth Avenue

## 46th Floor

Full Floor Plan Existing Conditions

# 9,866 RSF



712 5<sup>th</sup> Avenue  
New York, NY 10019

[SevenTwelveFifth.com](http://SevenTwelveFifth.com)

**Peter Brindley**  
Executive Vice President,  
Head of Real Estate  
212 237 3156  
[pbrindley@pgre.com](mailto:pbrindley@pgre.com)

**Douglas Neye**  
Senior Vice President  
212 237 2976  
[dneye@pgre.com](mailto:dneye@pgre.com)

**Sean Kirk**  
Assistant Vice President – Leasing  
212 237 3168  
[skirk@pgre.com](mailto:skirk@pgre.com)

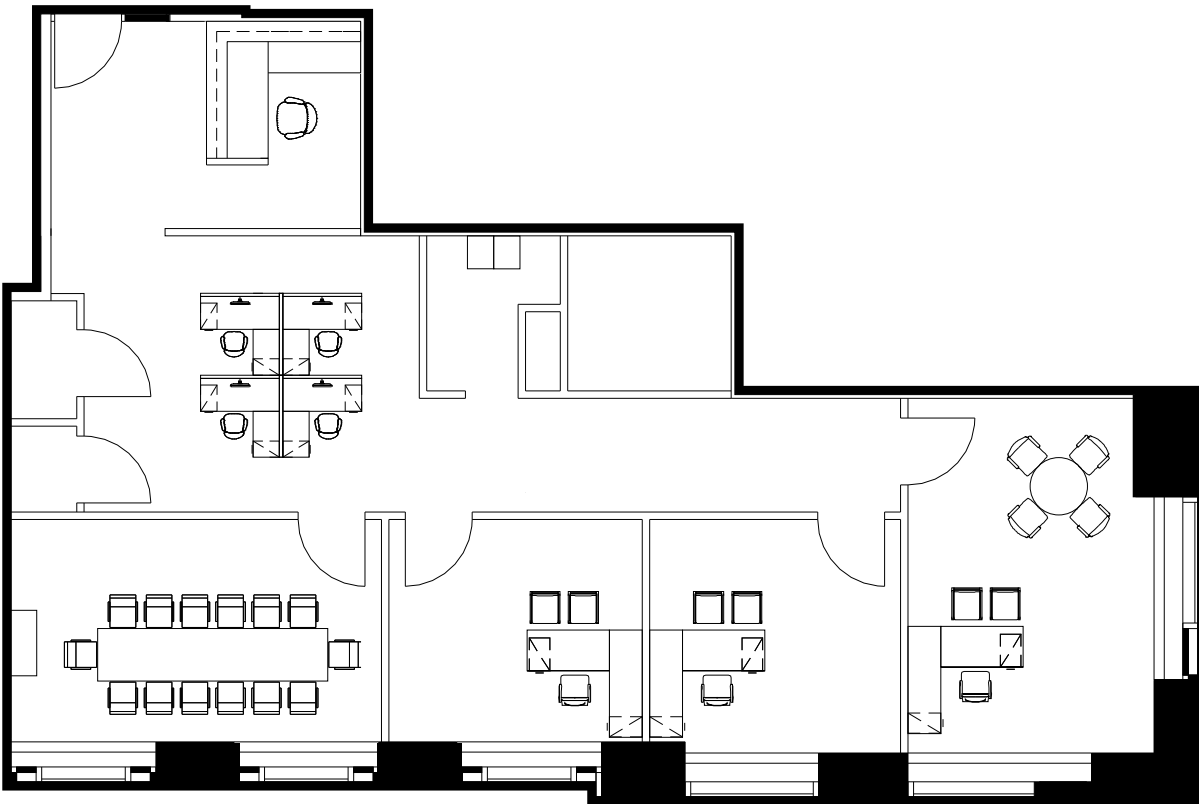
  
**PARAMOUNT**  
GROUP

# Seven Twelve Fifth Avenue

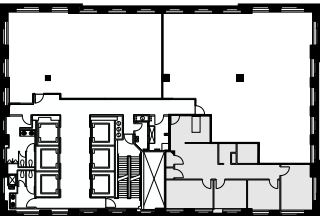
## 45th Floor

Partial Floor Plan (As Built)

# 2,306 RSF



Key Plan



712 5<sup>th</sup> Avenue  
New York, NY 10019  
[SevenTwelveFifth.com](http://SevenTwelveFifth.com)

**Peter Brindley**  
Executive Vice President,  
Head of Real Estate  
212 237 3156  
[pbrindley@pgre.com](mailto:pbrindley@pgre.com)

**Douglas Neye**  
Senior Vice President  
212 237 2976  
[dneye@pgre.com](mailto:dneye@pgre.com)

**Sean Kirk**  
Assistant Vice President – Leasing  
212 237 3168  
[skirk@pgre.com](mailto:skirk@pgre.com)

  
**PARAMOUNT**  
GROUP

# Seven Twelve Fifth Avenue

## 33rd Floor

Partial Floor Plan (New Prebuilt)

# 4,133 RSF

Executive Office

1

Private Offices

4

Workstations

7

Conference Room

1

IT Room

1

Open Pantry

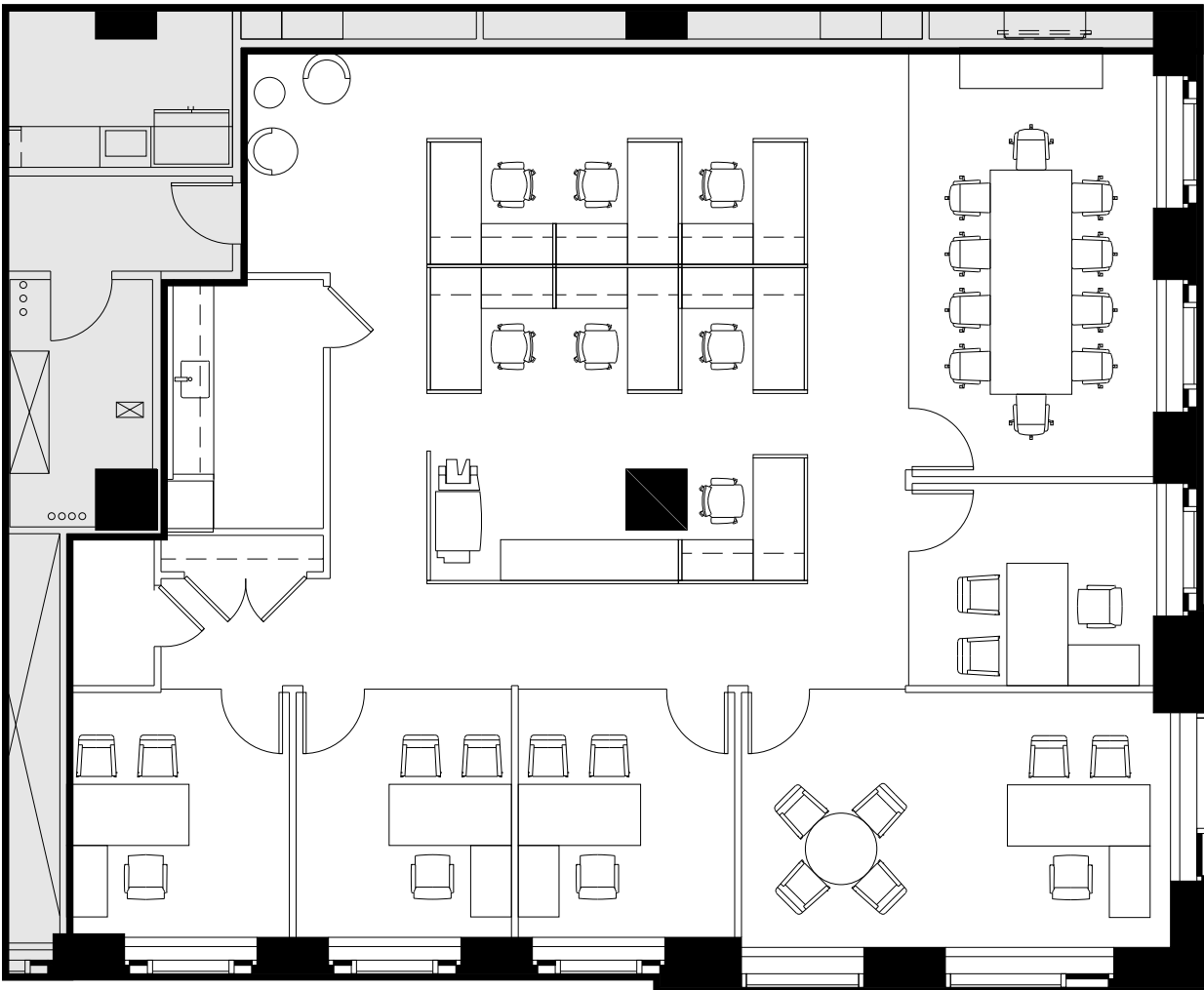
1

Copy Area

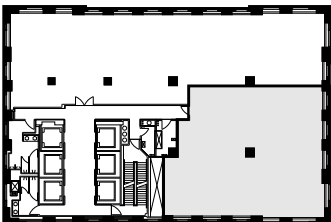
1

Storage Room

1



Key Plan



\*Available July 1, 2023

712 5<sup>th</sup> Avenue  
New York, NY 10019

[SevenTwelveFifth.com](http://SevenTwelveFifth.com)

**Peter Brindley**  
Executive Vice President,  
Head of Real Estate  
212 237 3156  
[pbrindley@pgre.com](mailto:pbrindley@pgre.com)

**Douglas Neye**  
Senior Vice President  
212 237 2976  
[dneye@pgre.com](mailto:dneye@pgre.com)

**Sean Kirk**  
Assistant Vice President – Leasing  
212 237 3168  
[skirk@pgre.com](mailto:skirk@pgre.com)

  
**PARAMOUNT**  
GROUP

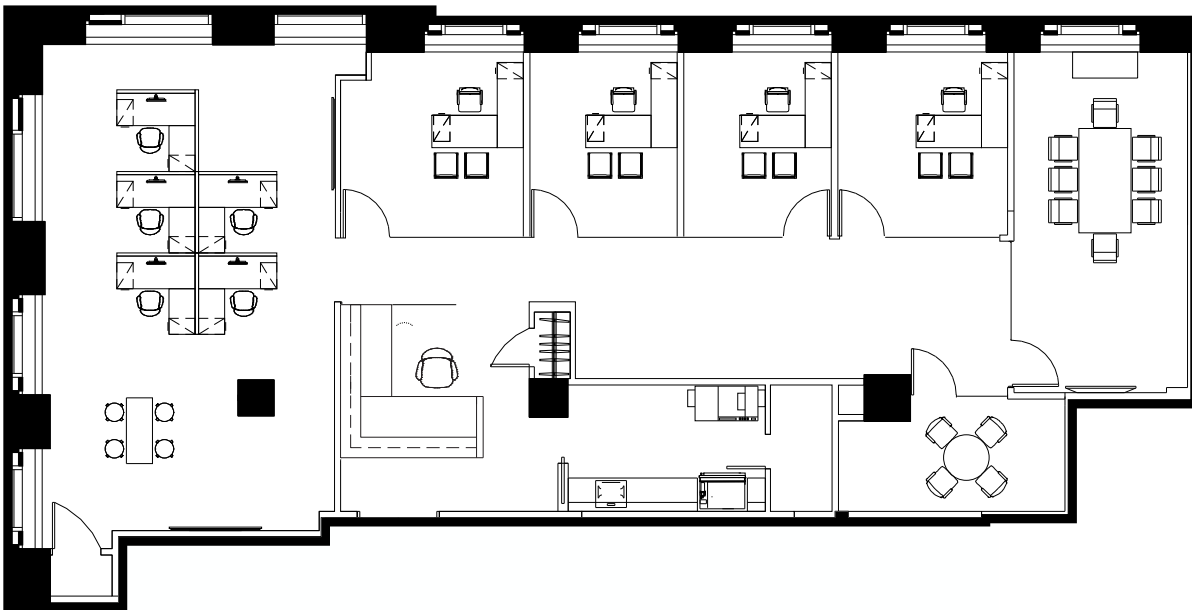


# Seven Twelve Fifth Avenue

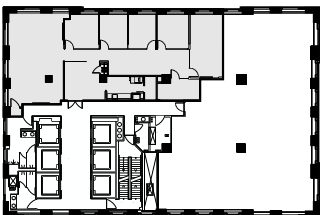
## 32nd Floor

Partial Floor Plans (New Prebuilt)

# 4,220 RSF



Key Plan



712 5<sup>th</sup> Avenue  
New York, NY 10019  
[SevenTwelveFifth.com](http://SevenTwelveFifth.com)

**Peter Brindley**  
Executive Vice President,  
Head of Real Estate  
212 237 3156  
[pbrindley@pgre.com](mailto:pbrindley@pgre.com)

**Douglas Neye**  
Senior Vice President  
212 237 2976  
[dneye@pgre.com](mailto:dneye@pgre.com)

**Sean Kirk**  
Assistant Vice President – Leasing  
212 237 3168  
[skirk@pgre.com](mailto:skirk@pgre.com)



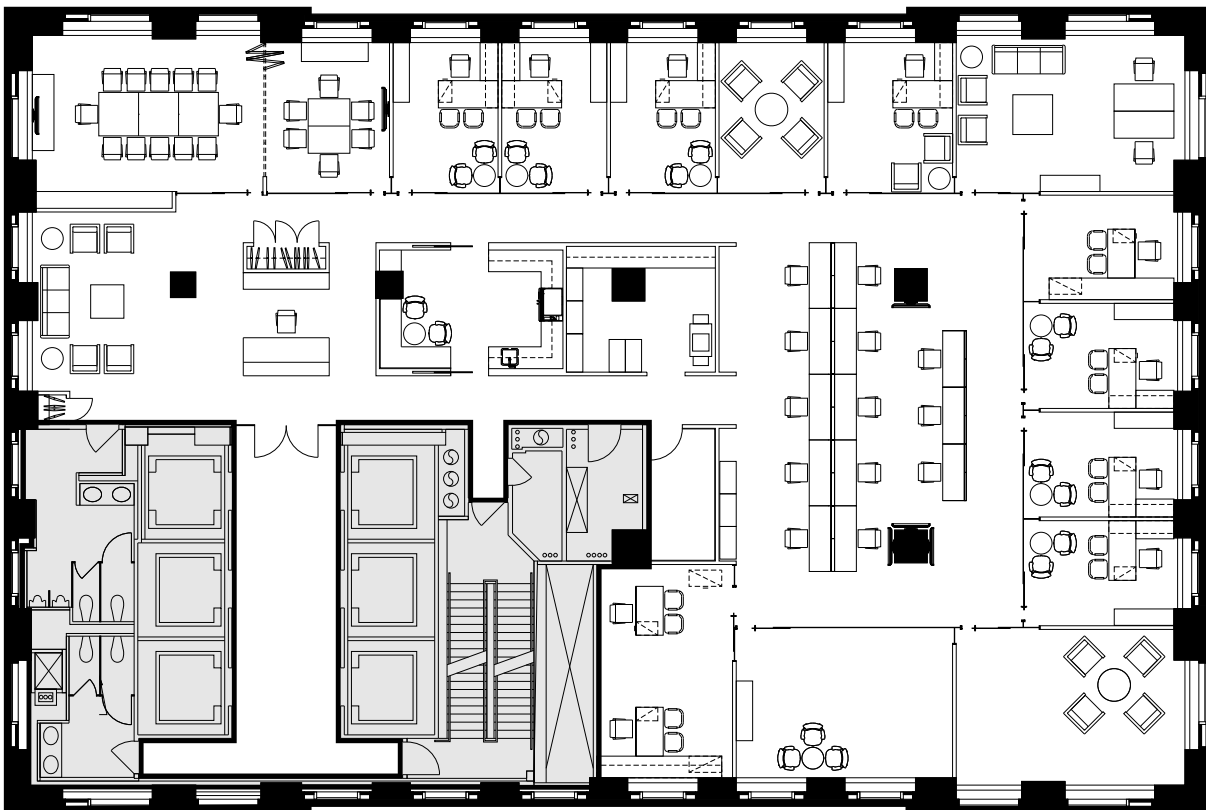
# Seven Twelve Fifth Avenue

## 30th Floor

Full Floor Plan Existing Conditions

# 9,813 RSF

Executive Offices	3	Conference Rooms	4	Copy Area	1
Private Offices	8	Cafe	1	Coat Closets	2
Workstations	13	IT Room	1		
Reception	1	Open Pantry	1		



712 5<sup>th</sup> Avenue  
New York, NY 10019

[SevenTwelveFifth.com](http://SevenTwelveFifth.com)

**Peter Brindley**  
Executive Vice President,  
Head of Real Estate  
212 237 3156  
[pbrindley@pgre.com](mailto:pbrindley@pgre.com)

**Douglas Neye**  
Senior Vice President  
212 237 2976  
[dneye@pgre.com](mailto:dneye@pgre.com)

**Sean Kirk**  
Assistant Vice President – Leasing  
212 237 3168  
[skirk@pgre.com](mailto:skirk@pgre.com)

  
**PARAMOUNT**  
GROUP

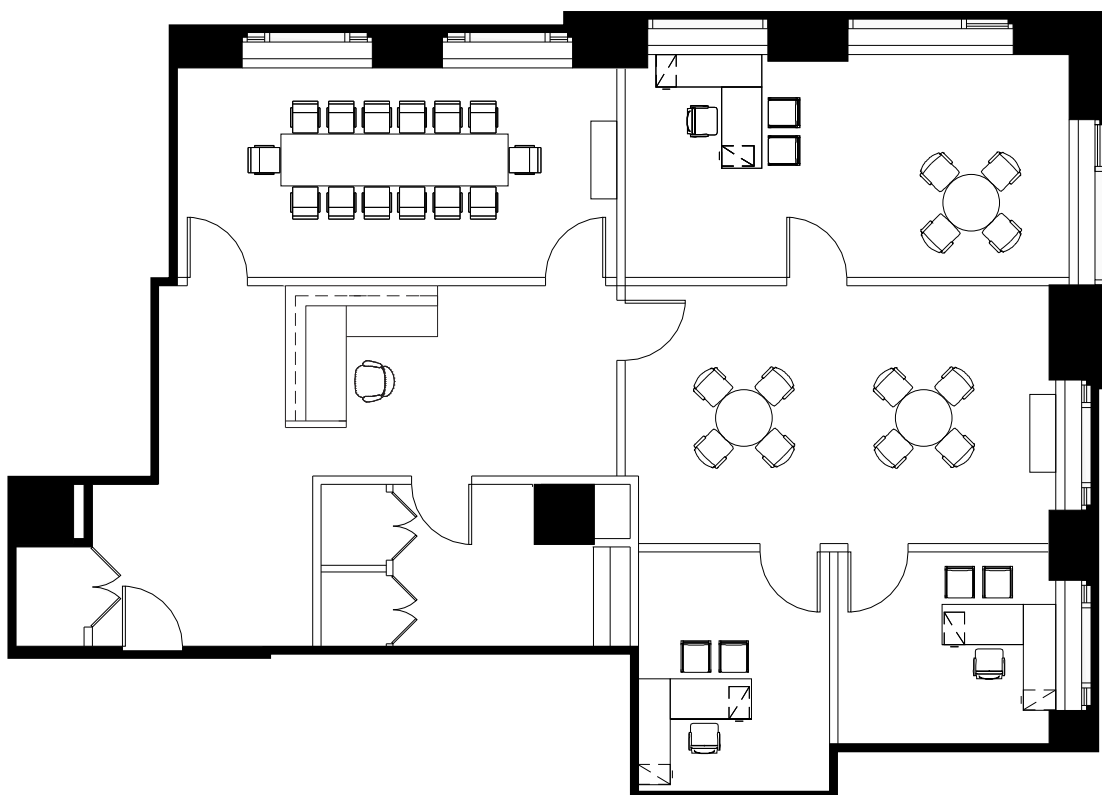
# Seven Twelve Fifth Avenue

## 28th Floor

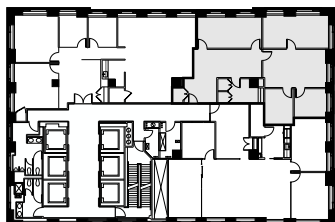
Partial Floor Plan (New Prebuilt)

# 3,028 RSF

Executive Office	1	IT Room	1
Private Offices	3	Open Pantry	1
Reception	1	Copy Area	1
Conference Room	1	Coat Closet	2



Key Plan



712 5<sup>th</sup> Avenue  
New York, NY 10019  
[SevenTwelveFifth.com](http://SevenTwelveFifth.com)

**Peter Brindley**  
Executive Vice President,  
Head of Real Estate  
212 237 3156  
[pbrindley@pgre.com](mailto:pbrindley@pgre.com)

**Douglas Neye**  
Senior Vice President  
212 237 2976  
[dneye@pgre.com](mailto:dneye@pgre.com)

**Sean Kirk**  
Assistant Vice President – Leasing  
212 237 3168  
[skirk@pgre.com](mailto:skirk@pgre.com)



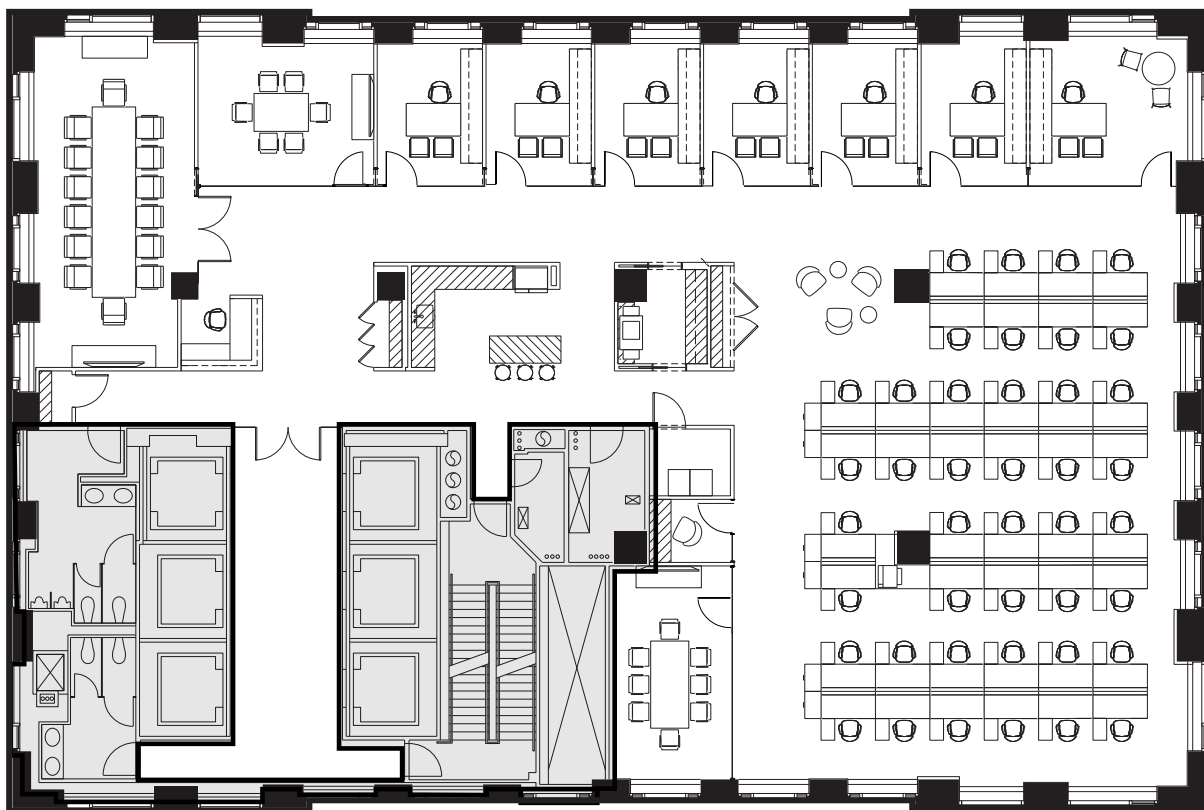
# Seven Twelve Fifth Avenue

## 24th Floor

Full Floor Plan (New Prebuilt)

# 9,734 RSF

Executive Office	1	Meeting Room	1
Private Offices	6	Pantry	1
Reception	1	Phone Room	1
Conference Rooms	2	Copy Room	1



712 5<sup>th</sup> Avenue  
New York, NY 10019  
[SevenTwelveFifth.com](http://SevenTwelveFifth.com)

**Peter Brindley**  
Executive Vice President,  
Head of Real Estate  
212 237 3156  
[pbrindley@pgre.com](mailto:pbrindley@pgre.com)

**Douglas Neye**  
Senior Vice President  
212 237 2976  
[dneye@pgre.com](mailto:dneye@pgre.com)

**Sean Kirk**  
Assistant Vice President – Leasing  
212 237 3168  
[skirk@pgre.com](mailto:skirk@pgre.com)

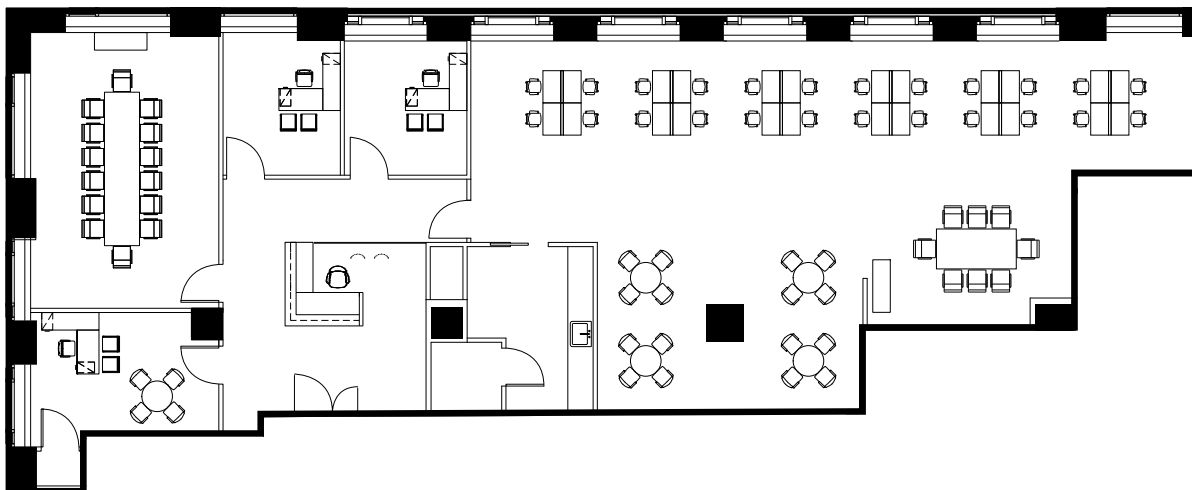
  
**PARAMOUNT**  
GROUP

# Seven Twelve Fifth Avenue

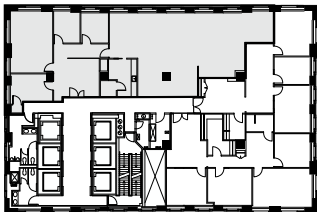
## 22nd Floor

Partial Floor Plan (New Prebuilt)

# 4,845 RSF



Key Plan



\*Available March 1, 2023

712 5<sup>th</sup> Avenue  
New York, NY 10019  
[SevenTwelveFifth.com](http://SevenTwelveFifth.com)

**Peter Brindley**  
Executive Vice President,  
Head of Real Estate  
212 237 3156  
[pbrindley@pgre.com](mailto:pbrindley@pgre.com)

**Douglas Neye**  
Senior Vice President  
212 237 2976  
[dneye@pgre.com](mailto:dneye@pgre.com)

**Sean Kirk**  
Assistant Vice President – Leasing  
212 237 3168  
[skirk@pgre.com](mailto:skirk@pgre.com)

  
**PARAMOUNT**  
GROUP

# Seven Twelve Fifth Avenue

## 21st Floor

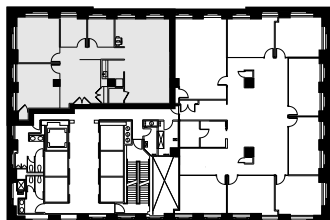
Partial Floor Plan (New Prebuilt)

# 3,153 RSF

Private Offices	3	IT Room	1
Workstations	10	Open Pantry	1
Reception	1	Copy Area	1
Conference Room	1	Coat Closet	1



Key Plan



712 5<sup>th</sup> Avenue  
New York, NY 10019  
[SevenTwelveFifth.com](http://SevenTwelveFifth.com)

**Peter Brindley**  
Executive Vice President,  
Head of Real Estate  
212 237 3156  
[pbrindley@pgre.com](mailto:pbrindley@pgre.com)

**Douglas Neye**  
Senior Vice President  
212 237 2976  
[dneye@pgre.com](mailto:dneye@pgre.com)

**Sean Kirk**  
Assistant Vice President – Leasing  
212 237 3168  
[skirk@pgre.com](mailto:skirk@pgre.com)

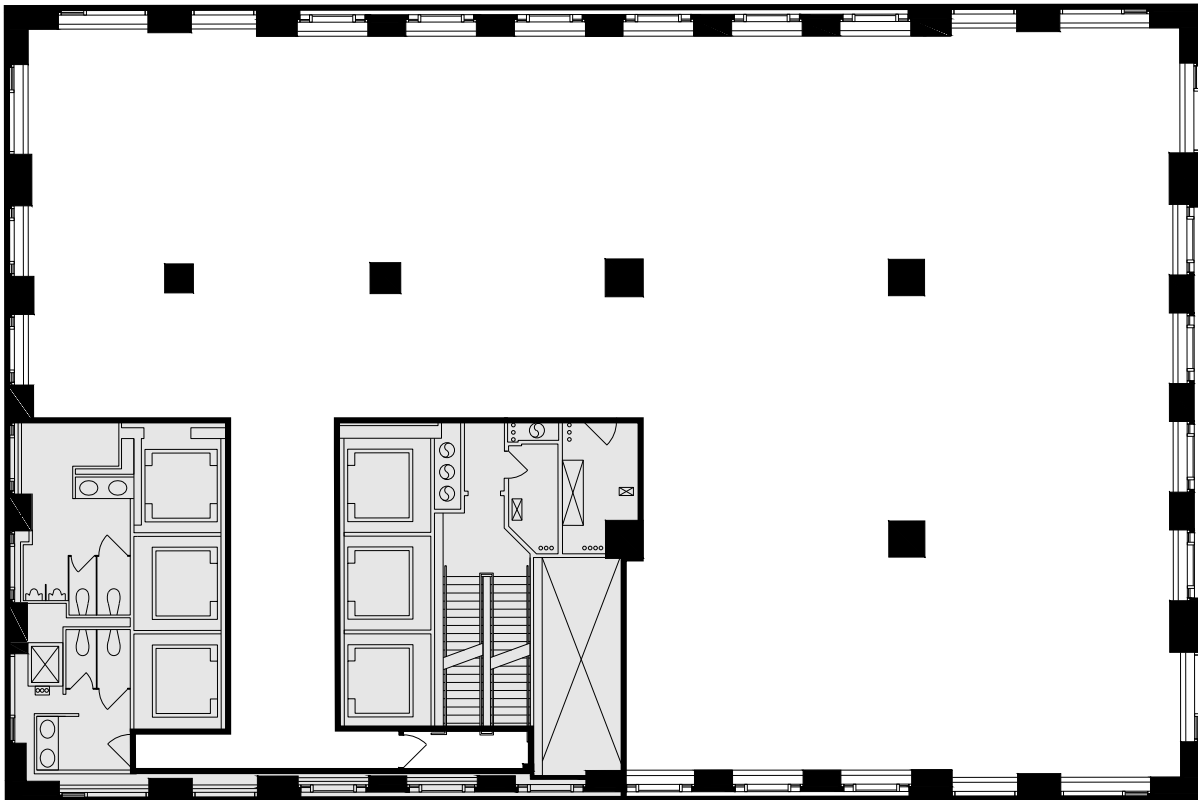


# Seven Twelve Fifth Avenue

## 20th Floor

Full Floor Core Plan

# 9,697 RSF



**\*Available December 1, 2022**

712 5<sup>th</sup> Avenue  
New York, NY 10019  
[SevenTwelveFifth.com](http://SevenTwelveFifth.com)

**Peter Brindley**  
Executive Vice President,  
Head of Real Estate  
212 237 3156  
[pbrindley@pgre.com](mailto:pbrindley@pgre.com)

**Douglas Neye**  
Senior Vice President  
212 237 2976  
[dneye@pgre.com](mailto:dneye@pgre.com)

**Sean Kirk**  
Assistant Vice President – Leasing  
212 237 3168  
[skirk@pgre.com](mailto:skirk@pgre.com)

  
**PARAMOUNT**  
GROUP