

Floor Availability

As of June 2022

All units are available immediately unless dated below.

Seven Twelve Fifth Avenue

Boutique Floor Plates

Each full floor comprises +/- 9,800 RSF
with partial to full floors available.

| | |
|----|-----------|
| 48 | 9,833 RSF |
| 47 | 9,866 RSF |
| 46 | 9,866 RSF |
| 45 | 2,306 RSF |

| | |
|----|-----------|
| 38 | 2,702 RSF |
|----|-----------|

| | |
|----|------------|
| 33 | 4,133 RSF |
| 32 | *4,220 RSF |
| 31 | 9,813 RSF |
| 30 | 9,813 RSF |

| | |
|----|-----------|
| 28 | 3,028 RSF |
|----|-----------|

| | |
|----|-----------|
| 24 | 9,734 RSF |
|----|-----------|

| | |
|----|-----------|
| 21 | 3,153 RSF |
| 20 | 9,697 RSF |

| | |
|----|------------|
| 12 | 12,930 RSF |
|----|------------|

| | |
|----|-----------|
| 09 | 6,660 RSF |
|----|-----------|

*Availability

*32 (4,220 RSF): 10/1/2022

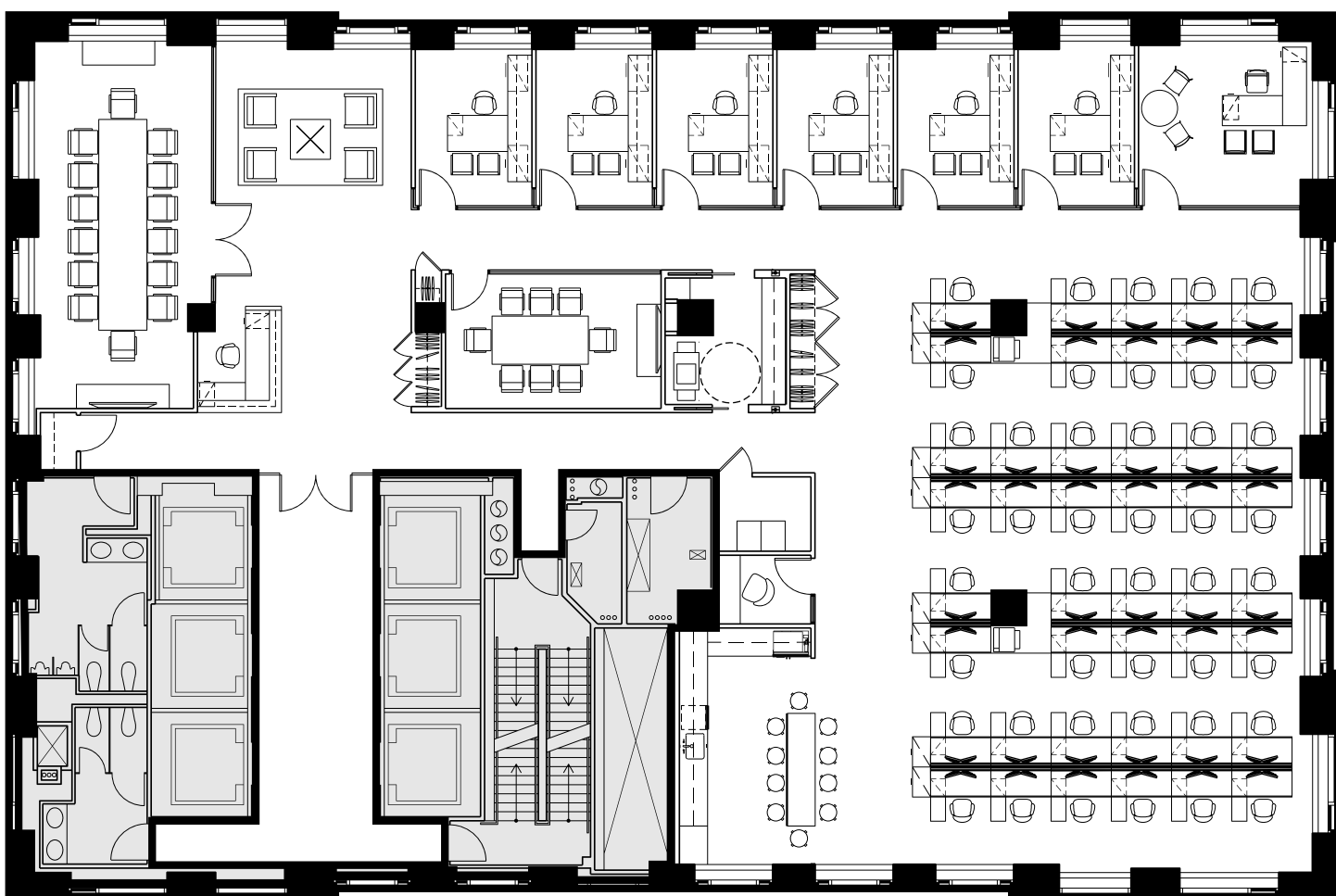
Seven Twelve Fifth Avenue

Open Plan

Representative Full Floor Plan

+/- 9,800 RSF

| | | | | | |
|------------------|----|-----------------|---|--------------|---|
| Executive Office | 1 | Board Room | 1 | Phone Room | 1 |
| Private Offices | 6 | Conference Room | 1 | Open Pantry | 1 |
| Workstations | 44 | Cafe | 1 | Copy Area | 1 |
| Reception | 1 | IT Room | 1 | Coat Closets | 2 |



712 5th Avenue
New York, NY 10019
SevenTwelveFifth.com

Peter Brindley
Executive Vice President,
Head of Real Estate
212 237 3156
pbrindley@pgre.com

Douglas Neye
Senior Vice President
212 237 2976
dneye@pgre.com

Sean Kirk
Assistant Vice President – Leasing
212 237 3168
skirk@pgre.com


PARAMOUNT
GROUP

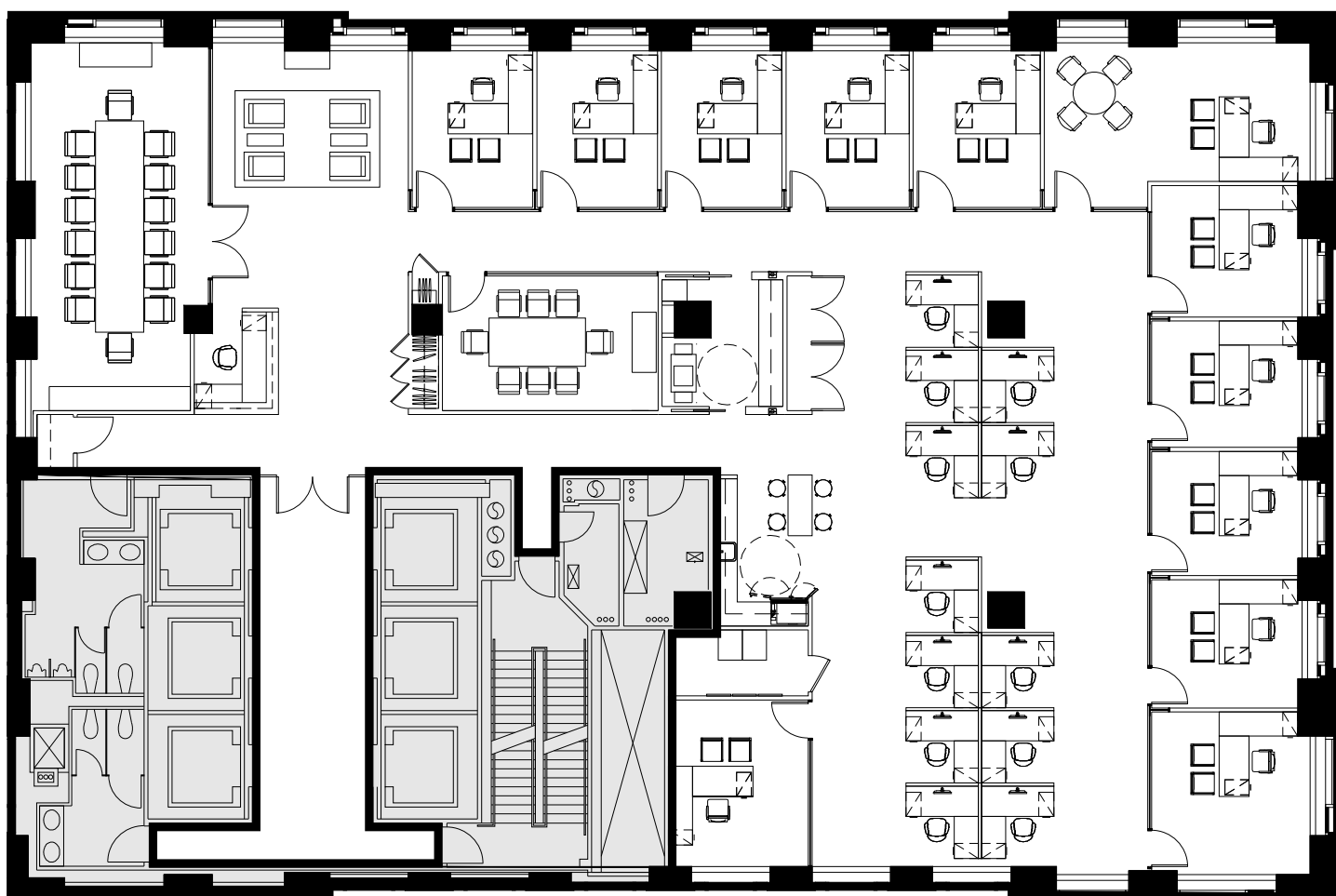
Seven Twelve Fifth Avenue

Office Plan

Representative Full Floor Plan

+/- 9,800 RSF

| | | | | | |
|------------------|----|-----------------|---|------------|---|
| Executive Office | 1 | Board Room | 1 | Pantry | 1 |
| Private Offices | 11 | Conference Room | 1 | Copy Area | 1 |
| Workstations | 12 | Cafe | 1 | Coat Rooms | 3 |
| Reception | 1 | IT Room | 1 | | |



712 5th Avenue
New York, NY 10019
SevenTwelveFifth.com

Peter Brindley
Executive Vice President,
Head of Real Estate
212 237 3156
pbrindley@pgre.com

Douglas Neye
Senior Vice President
212 237 2976
dneye@pgre.com

Sean Kirk
Assistant Vice President – Leasing
212 237 3168
skirk@pgre.com

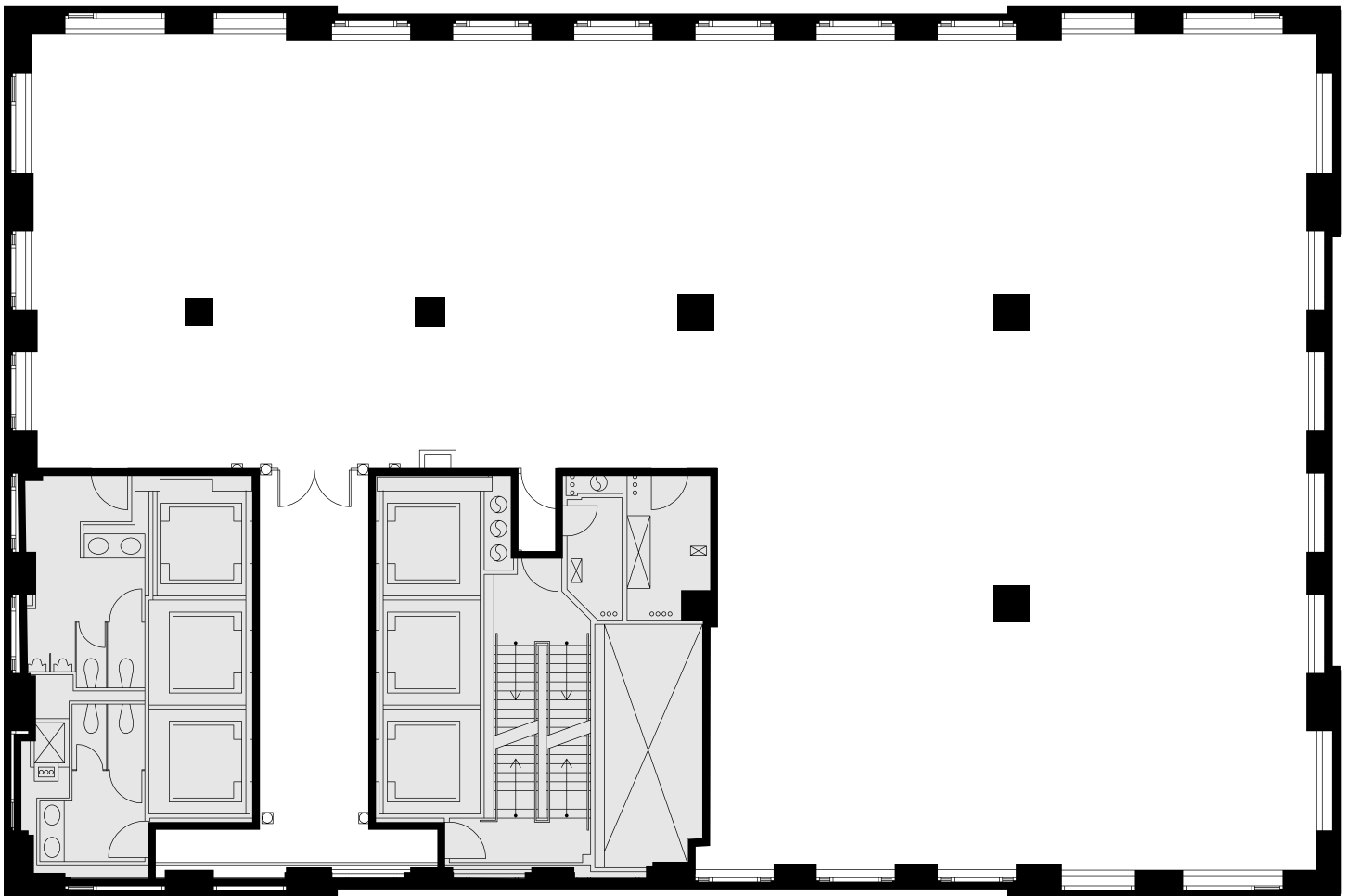

PARAMOUNT
GROUP

Seven Twelve Fifth Avenue

Full Floor Core Plan

Representative Full Floor Plan

+/- 9,800 RSF



712 5th Avenue
New York, NY 10019
SevenTwelveFifth.com

Peter Brindley
Executive Vice President,
Head of Real Estate
212 237 3156
pbrindley@pgre.com

Douglas Neye
Senior Vice President
212 237 2976
dneye@pgre.com

Sean Kirk
Assistant Vice President – Leasing
212 237 3168
skirk@pgre.com

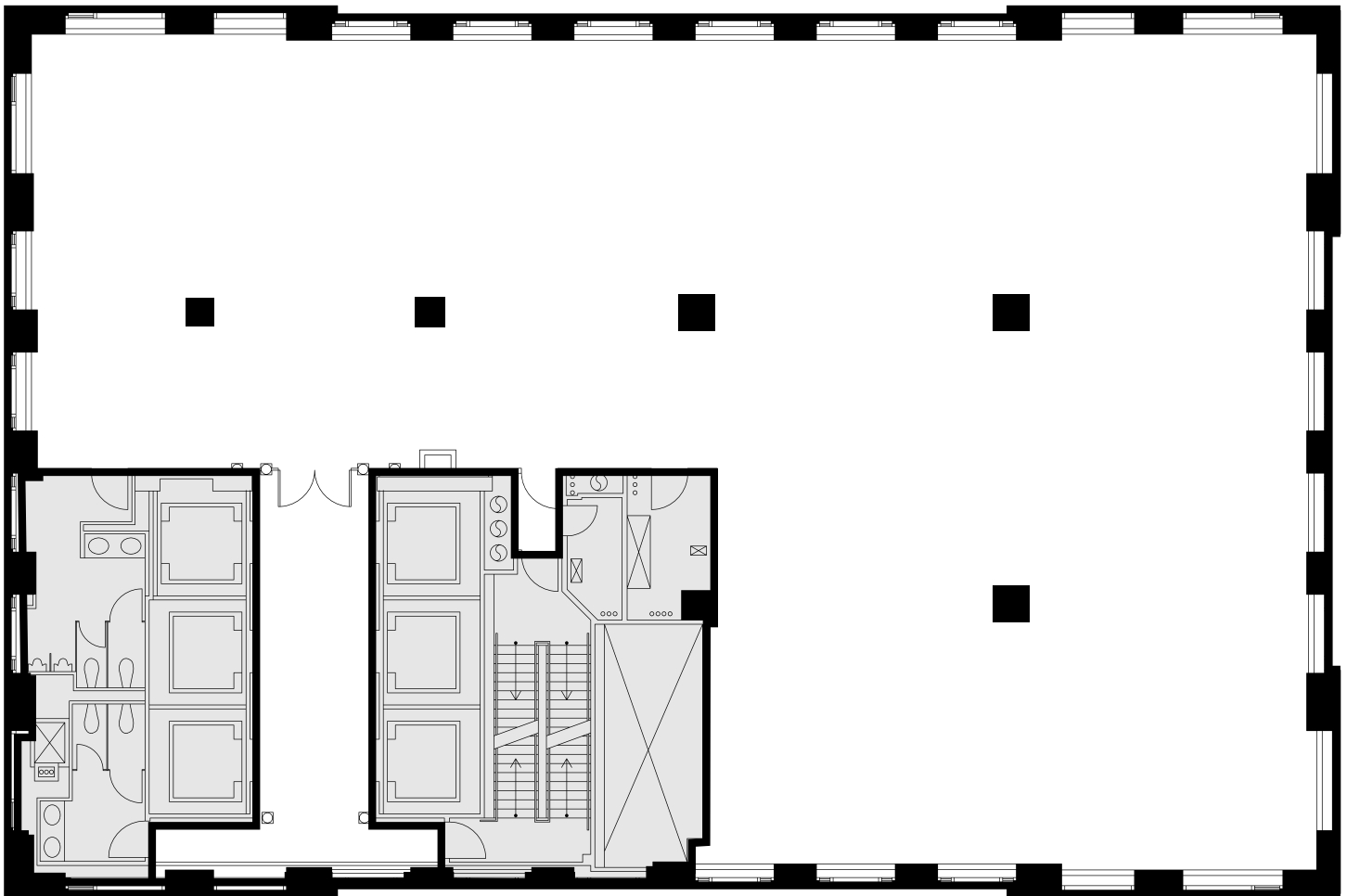

PARAMOUNT
GROUP

Seven Twelve Fifth Avenue

48th Floor

Full Floor Core Plan

9,833 RSF



712 5th Avenue
New York, NY 10019
SevenTwelveFifth.com

Peter Brindley
Executive Vice President,
Head of Real Estate
212 237 3156
pbrindley@pgre.com

Douglas Neye
Senior Vice President
212 237 2976
dneye@pgre.com

Sean Kirk
Assistant Vice President – Leasing
212 237 3168
skirk@pgre.com

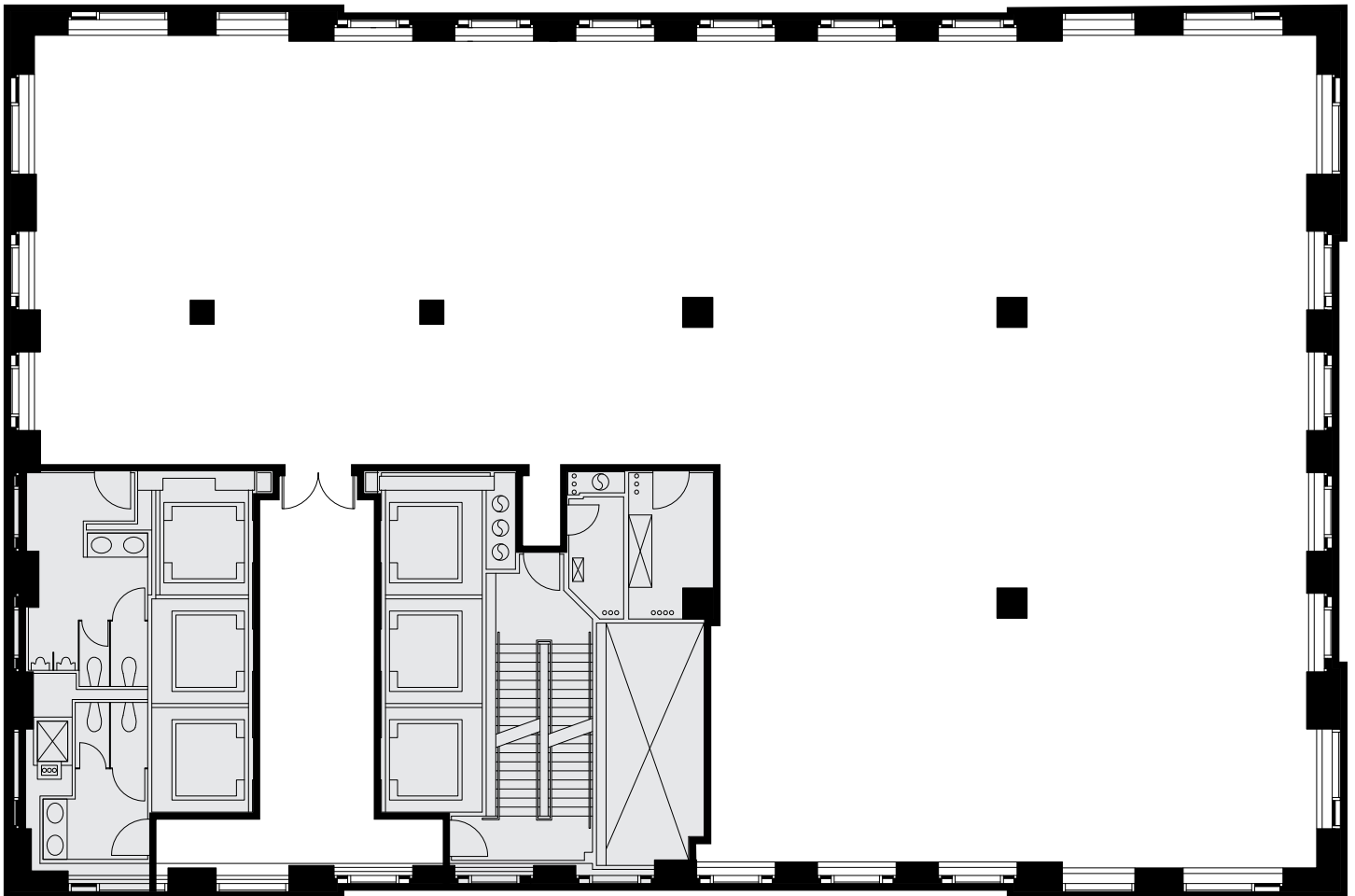

PARAMOUNT
GROUP

Seven Twelve Fifth Avenue

47th Floor

Full Floor Core Plan

9,866 RSF



712 5th Avenue
New York, NY 10019
SevenTwelveFifth.com

Peter Brindley
Executive Vice President,
Head of Real Estate
212 237 3156
pbrindley@pgre.com

Douglas Neye
Senior Vice President
212 237 2976
dneye@pgre.com

Sean Kirk
Assistant Vice President – Leasing
212 237 3168
skirk@pgre.com

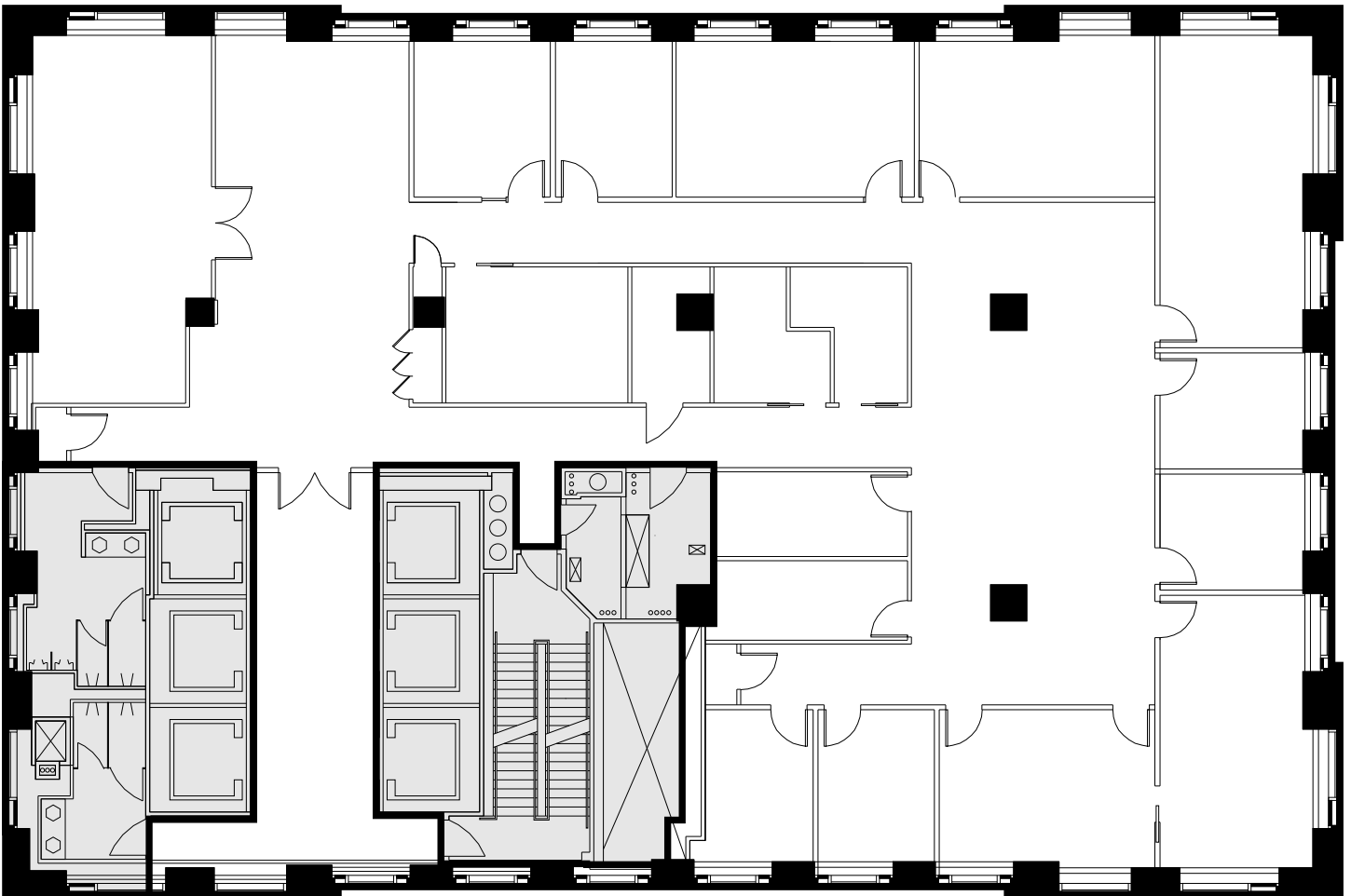

PARAMOUNT
GROUP

Seven Twelve Fifth Avenue

46th Floor

Full Floor Plan Existing Conditions

9,866 RSF



712 5th Avenue
New York, NY 10019
SevenTwelveFifth.com

Peter Brindley
Executive Vice President,
Head of Real Estate
212 237 3156
pbrindley@pgre.com

Douglas Neye
Senior Vice President
212 237 2976
dneye@pgre.com

Sean Kirk
Assistant Vice President – Leasing
212 237 3168
skirk@pgre.com

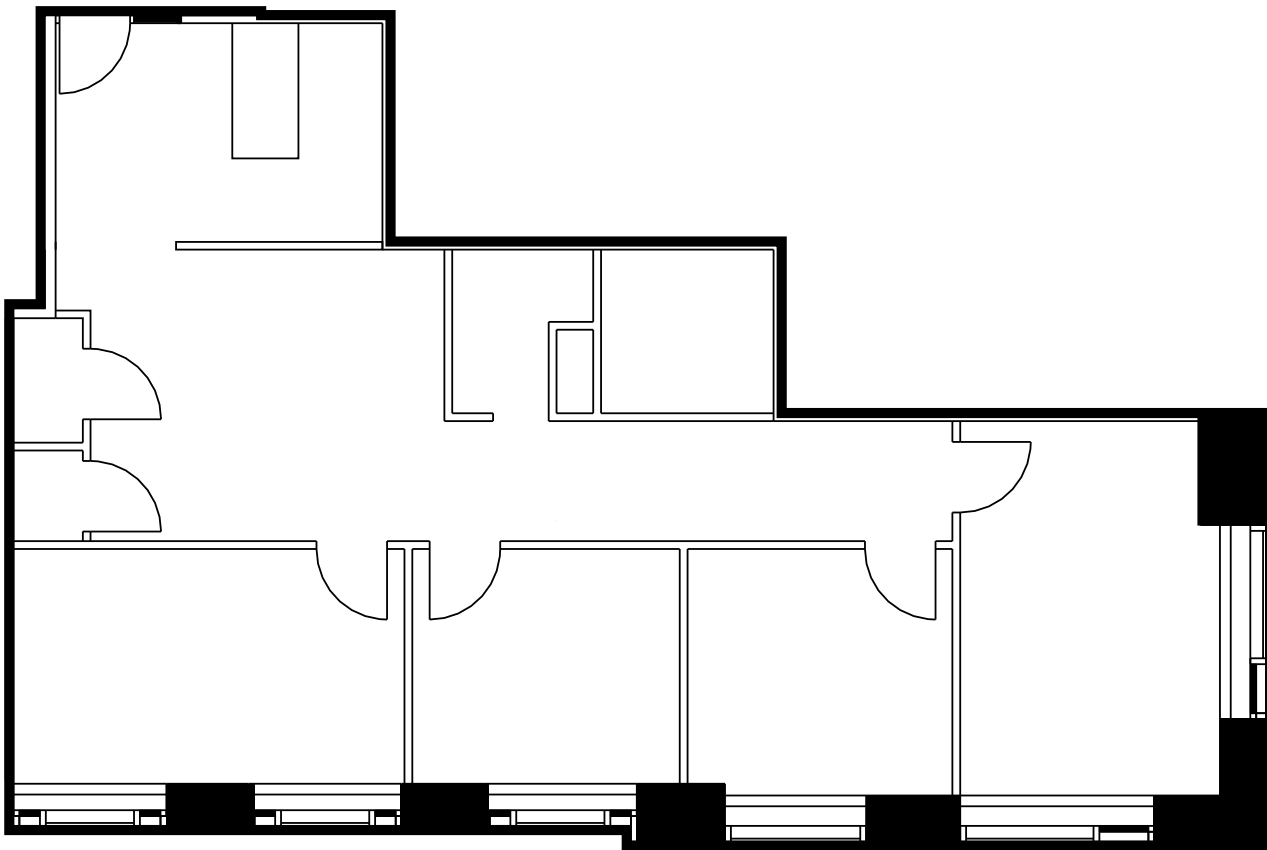

PARAMOUNT
GROUP

Seven Twelve Fifth Avenue

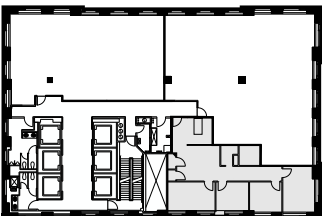
45th
Floor

Partial Floor Plan (As Built)

2,306 RSF



Key Plan



712 5th Avenue
New York, NY 10019
SevenTwelveFifth.com

Peter Brindley
Executive Vice President,
Head of Real Estate
212 237 3156
pbrindley@pgre.com

Douglas Neye
Senior Vice President
212 237 2976
dneye@pgre.com

Sean Kirk
Assistant Vice President – Leasing
212 237 3168
skirk@pgre.com

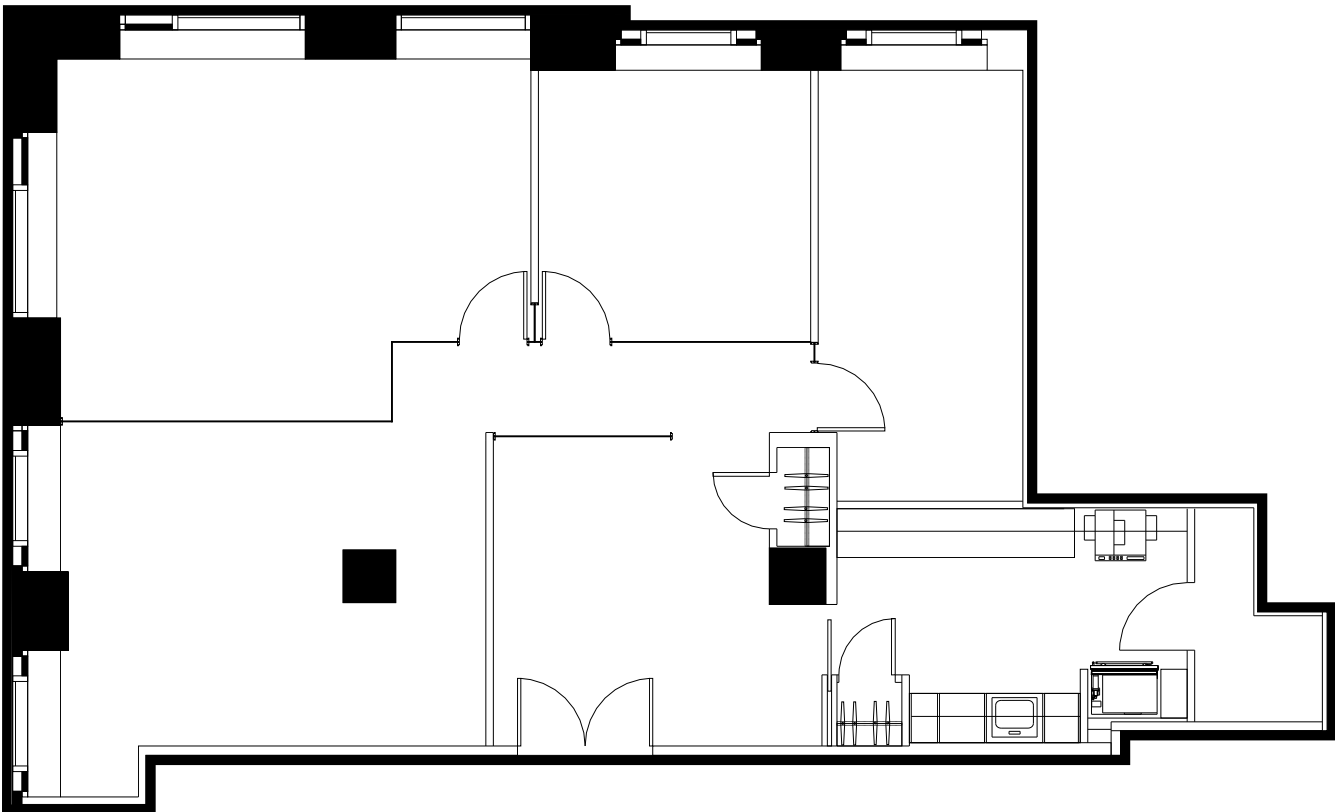

PARAMOUNT
GROUP

Seven Twelve Fifth Avenue

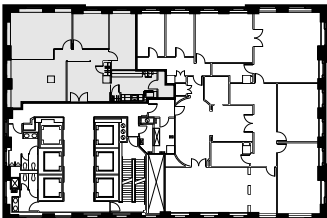
38th
Floor

Partial Floor Plan Existing Conditions

2,702 RSF



Key Plan



712 5th Avenue
New York, NY 10019
SevenTwelveFifth.com

Peter Brindley
Executive Vice President,
Head of Real Estate
212 237 3156
pbrindley@pgre.com

Douglas Neye
Senior Vice President
212 237 2976
dneye@pgre.com

Sean Kirk
Assistant Vice President – Leasing
212 237 3168
skirk@pgre.com


PARAMOUNT
GROUP

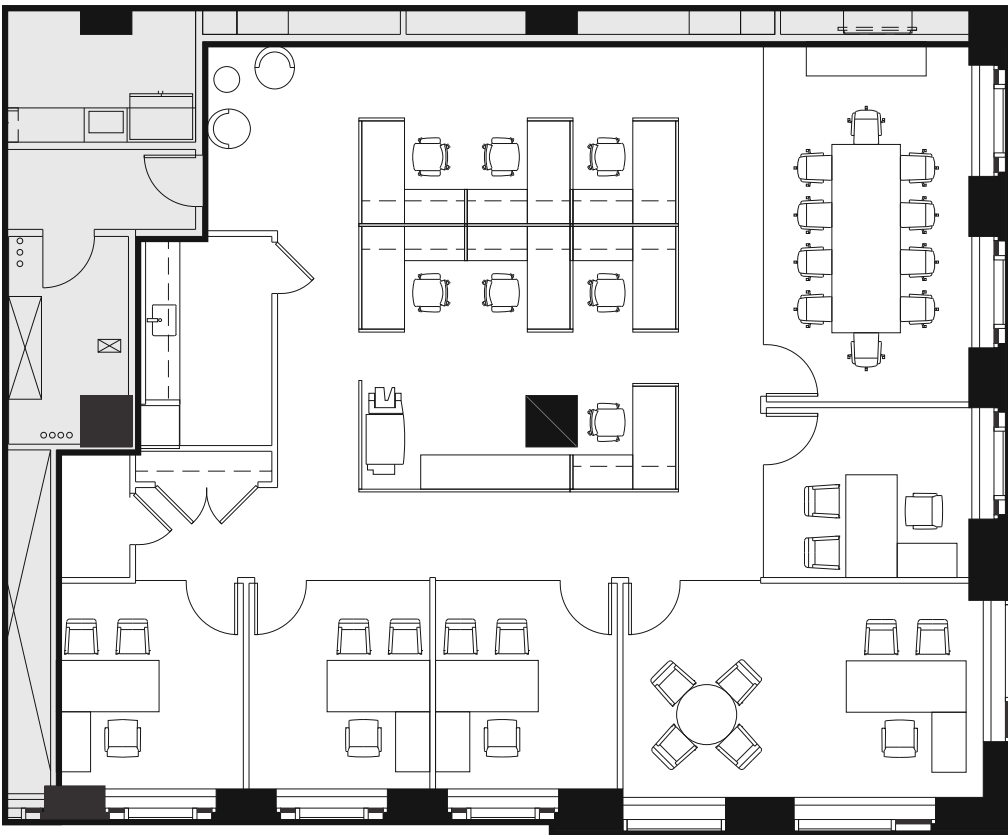
Seven Twelve Fifth Avenue

33rd Floor

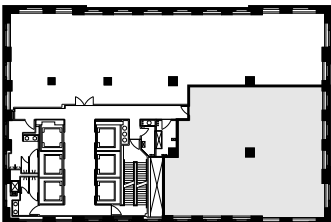
Partial Floor Plan (New Prebuilt)

4,133 RSF

| | | | | | |
|------------------|---|-----------------|---|--------------|---|
| Executive Office | 1 | Conference Room | 1 | Copy Area | 1 |
| Private Offices | 4 | IT Room | 1 | Storage Room | 1 |
| Workstations | 7 | Open Pantry | 1 | | |



Key Plan



712 5th Avenue
New York, NY 10019
SevenTwelveFifth.com

Peter Brindley
Executive Vice President,
Head of Real Estate
212 237 3156
pbrindley@pgre.com

Douglas Neye
Senior Vice President
212 237 2976
dneye@pgre.com

Sean Kirk
Assistant Vice President – Leasing
212 237 3168
skirk@pgre.com


PARAMOUNT
GROUP

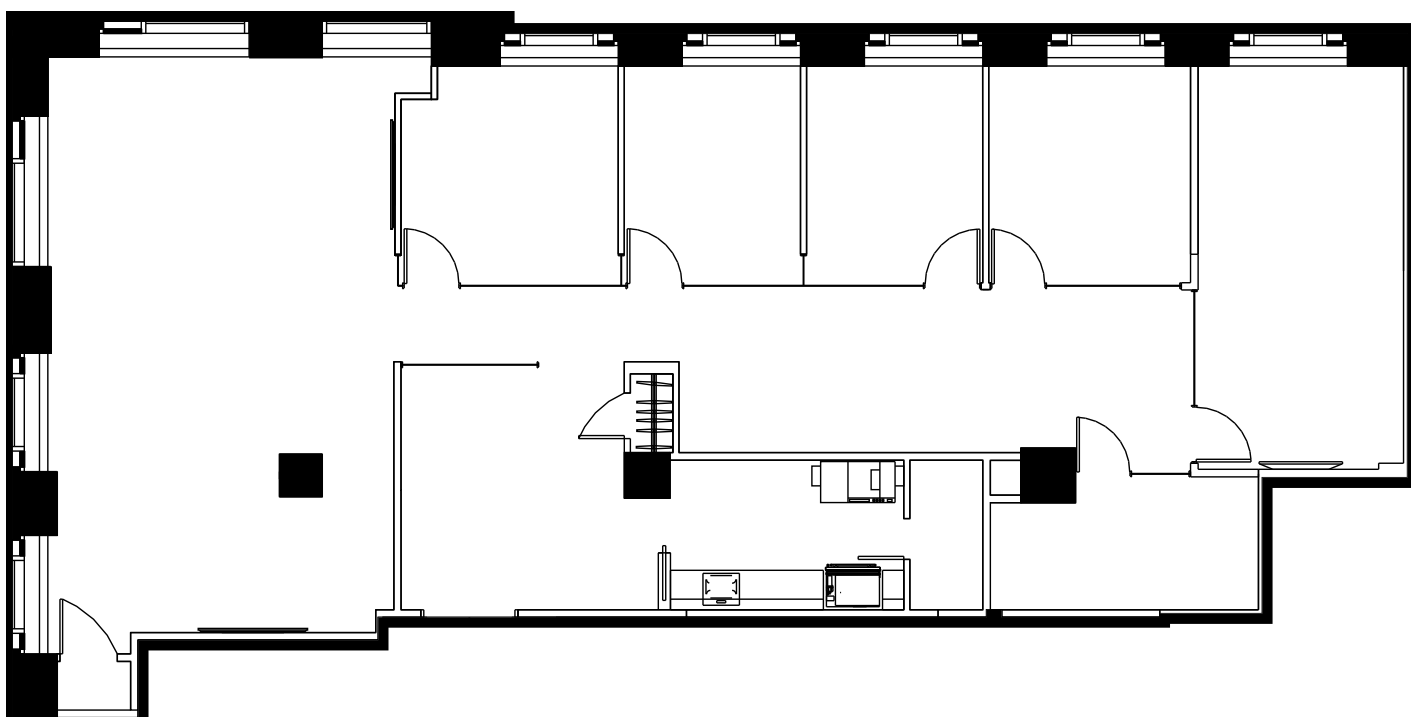
Seven Twelve Fifth Avenue

32nd Floor

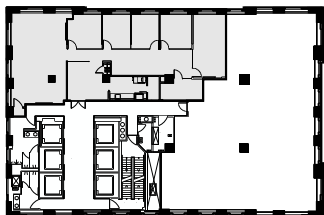
Partial Floor Plan (New Prebuilt)

4,220 RSF

| | | | | | |
|------------------|---|-----------------|---|--------------|---|
| Executive Office | 1 | Conference Room | 1 | Copy Area | 1 |
| Private Offices | 4 | IT Room | 1 | Storage Room | 1 |
| Workstations | 7 | Open Pantry | 1 | | |



Key Plan



712 5th Avenue
New York, NY 10019
SevenTwelveFifth.com

Peter Brindley
Executive Vice President,
Head of Real Estate
212 237 3156
pbrindley@pgre.com

Douglas Neye
Senior Vice President
212 237 2976
dneye@pgre.com

Sean Kirk
Assistant Vice President – Leasing
212 237 3168
skirk@pgre.com

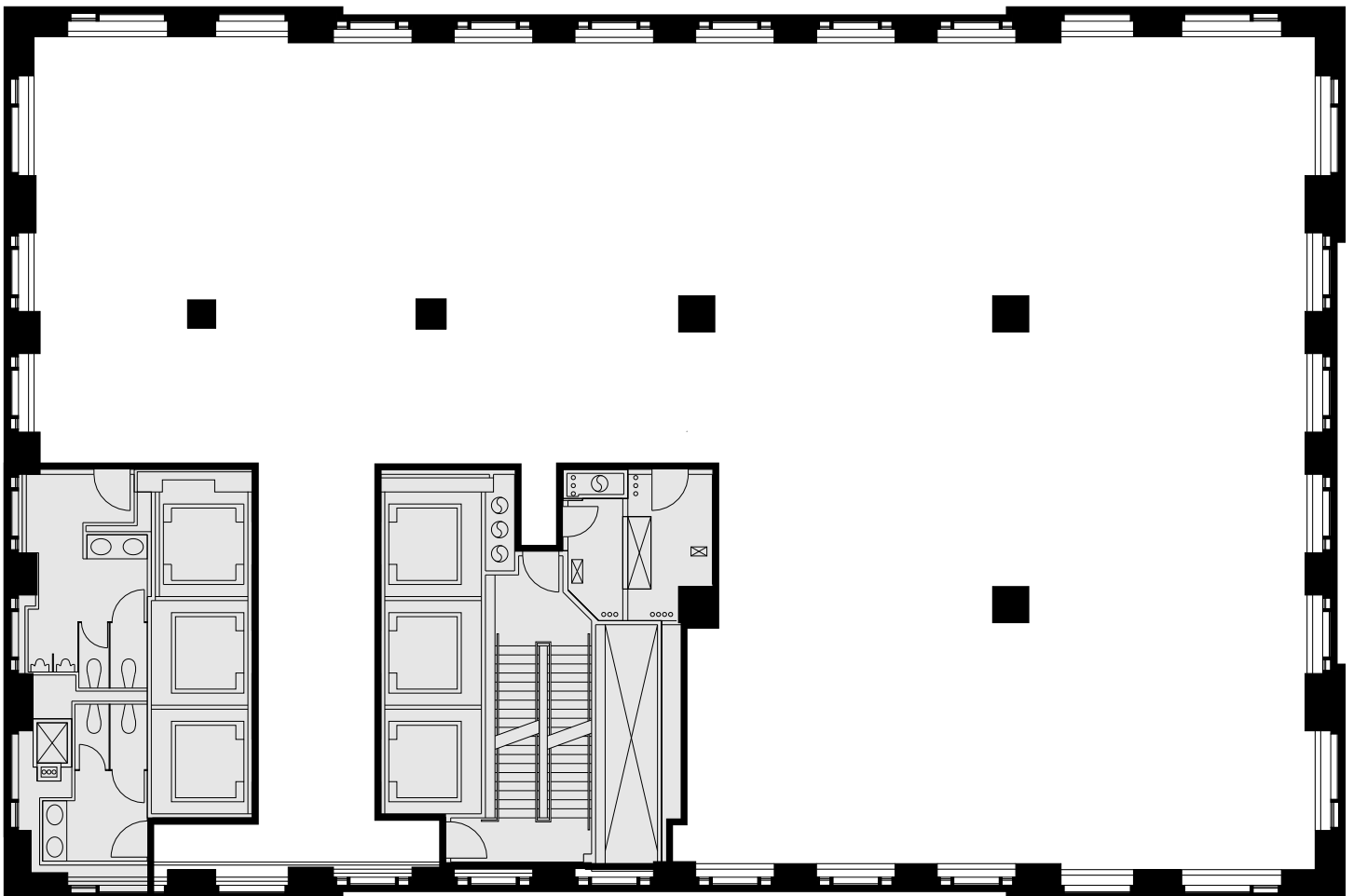

PARAMOUNT
GROUP

Seven Twelve Fifth Avenue

31st Floor

Full Floor Plan Existing Conditions

9,813 RSF



712 5th Avenue
New York, NY 10019
SevenTwelveFifth.com

Peter Brindley
Executive Vice President,
Head of Real Estate
212 237 3156
pbrindley@pgre.com

Douglas Neye
Senior Vice President
212 237 2976
dneye@pgre.com

Sean Kirk
Assistant Vice President – Leasing
212 237 3168
skirk@pgre.com


PARAMOUNT
GROUP

Seven Twelve Fifth Avenue

30th Floor

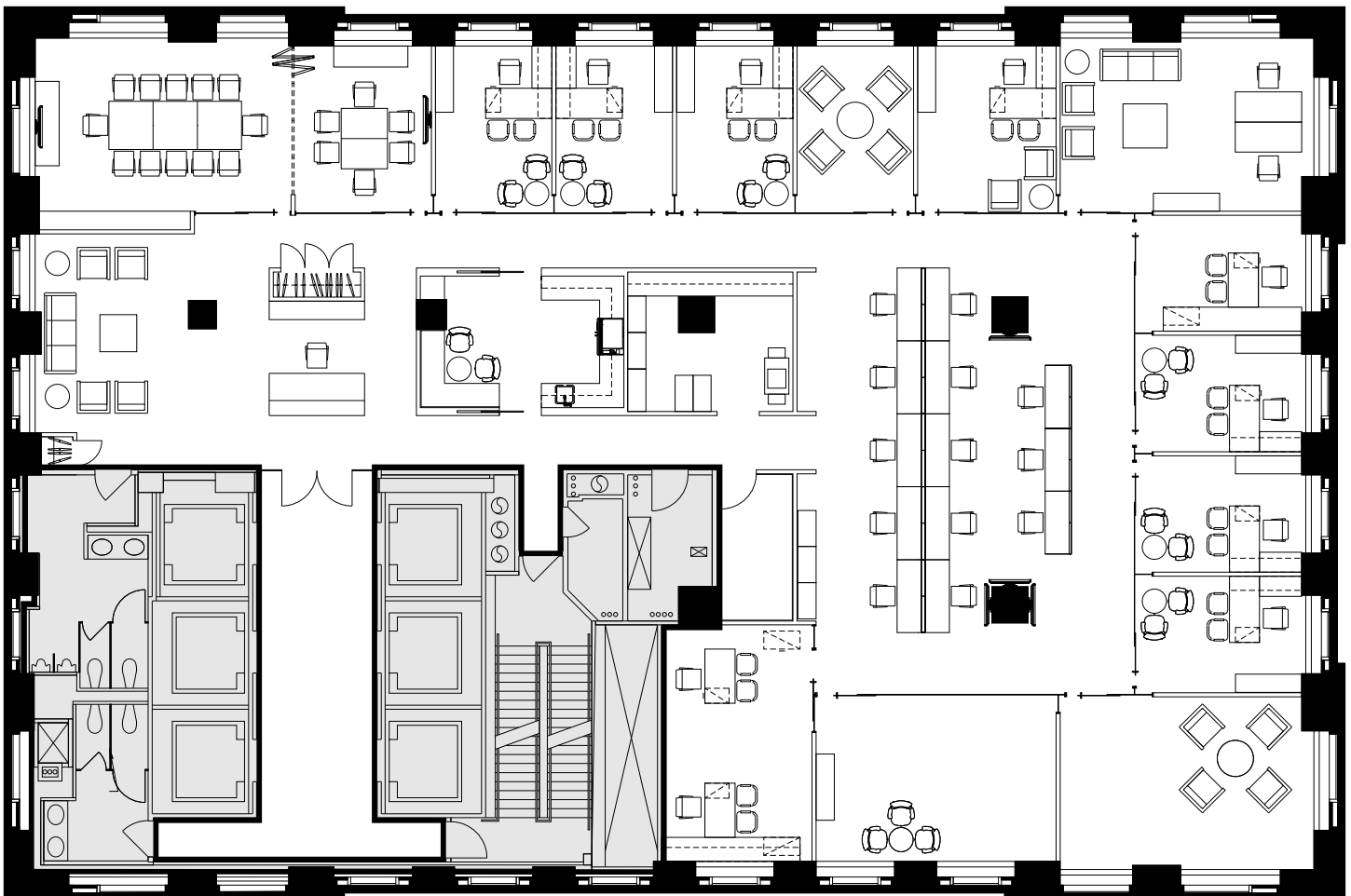
Full Floor Plan Existing Conditions

9,813 RSF

| | |
|-------------------|----|
| Executive Offices | 3 |
| Private Offices | 8 |
| Workstations | 13 |
| Reception | 1 |

| | |
|------------------|---|
| Conference Rooms | 4 |
| Cafe | 1 |
| IT Room | 1 |
| Open Pantry | 1 |

| | |
|--------------|---|
| Copy Area | 1 |
| Coat Closets | 2 |



712 5th Avenue
New York, NY 10019
SevenTwelveFifth.com

Peter Brindley
Executive Vice President,
Head of Real Estate
212 237 3156
pbrindley@pgre.com

Douglas Neye
Senior Vice President
212 237 2976
dneye@pgre.com

Sean Kirk
Assistant Vice President – Leasing
212 237 3168
skirk@pgre.com



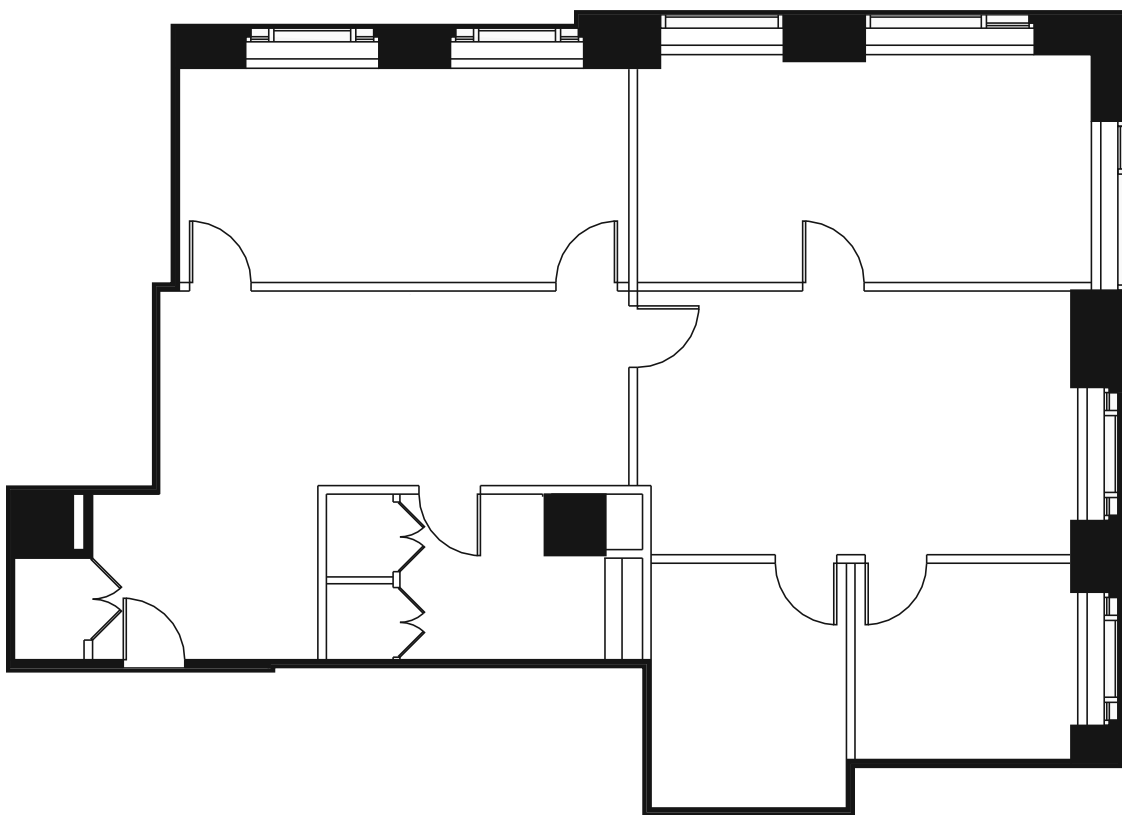
Seven Twelve Fifth Avenue

28th Floor

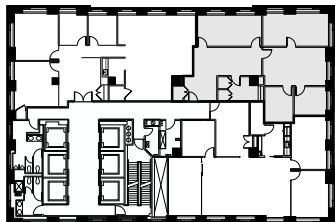
Partial Floor Plan (New Prebuilt)

3,028 RSF

| | | | | | |
|------------------|----|-----------------|---|-------------|---|
| Executive Office | 1 | Conference Room | 1 | Coat Closet | 1 |
| Private Offices | 3 | IT Room | 1 | | |
| Workstations | 10 | Open Pantry | 1 | | |
| Reception | 1 | Copy Area | 1 | | |



Key Plan

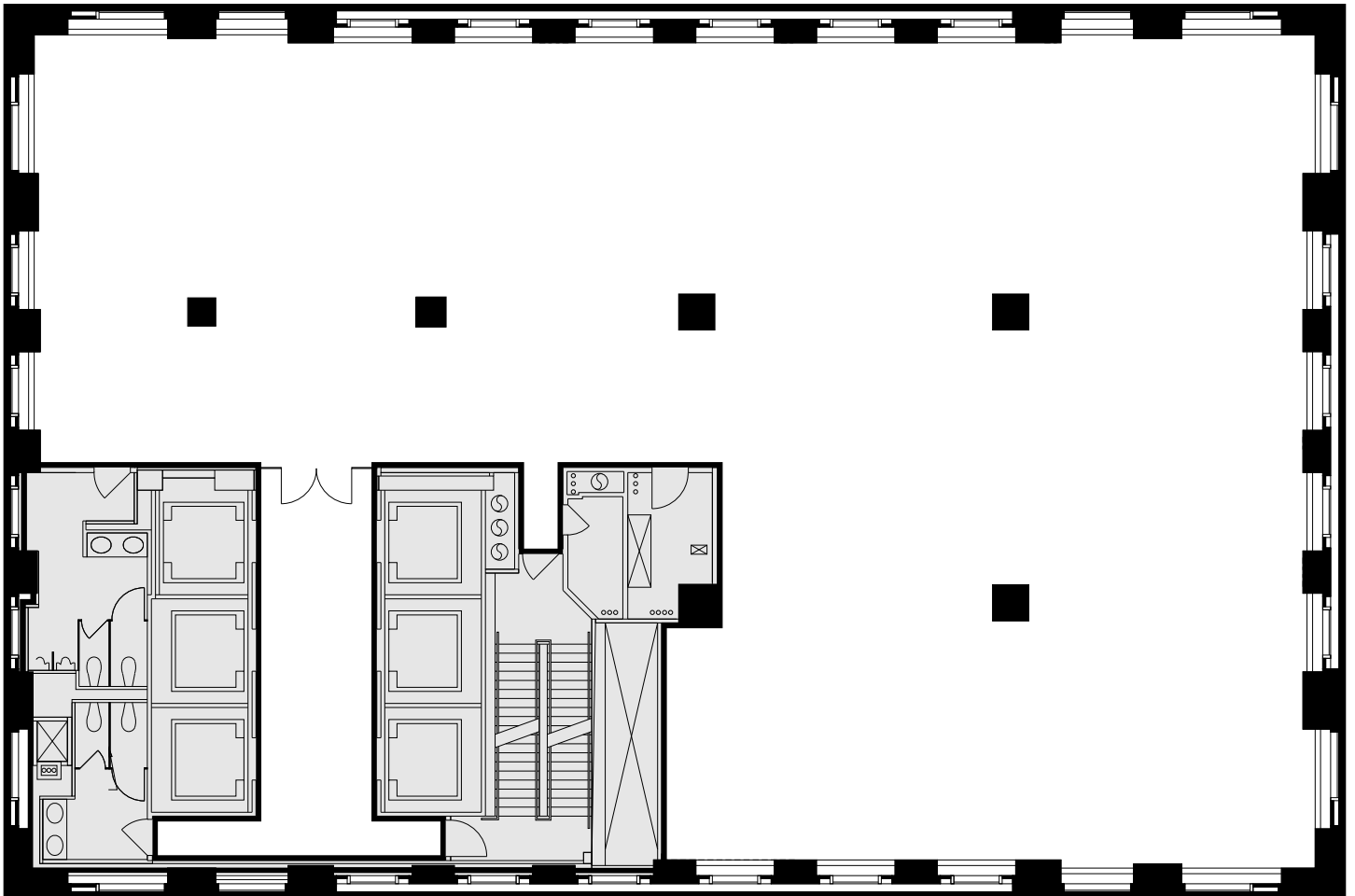


Seven Twelve Fifth Avenue

24th Floor

Full Floor Core Plan

9,734 RSF



712 5th Avenue
New York, NY 10019
SevenTwelveFifth.com

Peter Brindley
Executive Vice President,
Head of Real Estate
212 237 3156
pbrindley@pgre.com

Douglas Neye
Senior Vice President
212 237 2976
dneye@pgre.com

Sean Kirk
Assistant Vice President – Leasing
212 237 3168
skirk@pgre.com


PARAMOUNT
GROUP

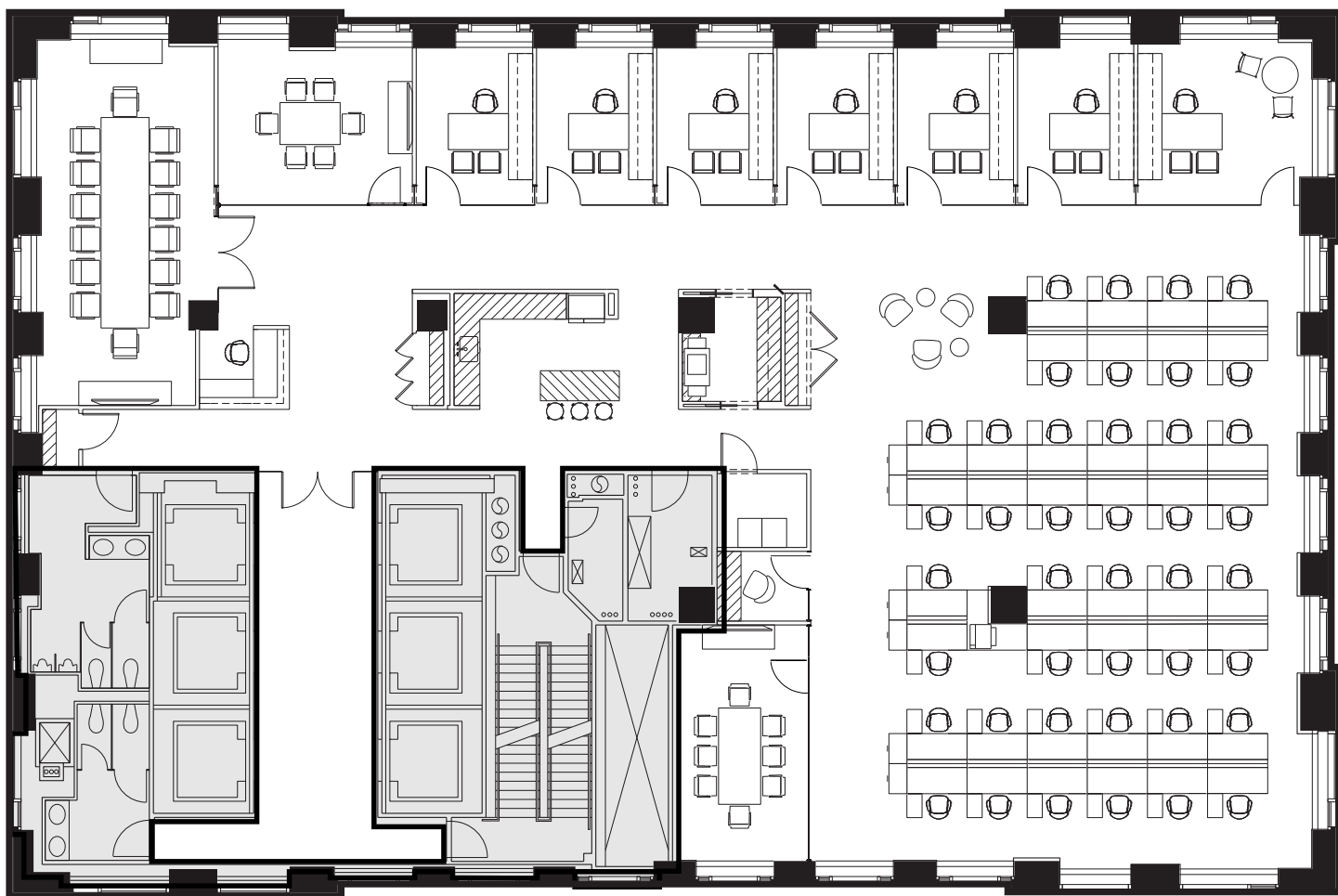
Seven Twelve Fifth Avenue

24th Floor

Full Floor (As Built) Floor Plan

9,734 RSF

| | | | |
|------------------|---|--------------|---|
| Executive Office | 1 | Meeting Room | 1 |
| Private Offices | 6 | Pantry | 1 |
| Reception | 1 | Phone Room | 1 |
| Conference Rooms | 2 | Copy Room | 1 |



712 5th Avenue
New York, NY 10019
SevenTwelveFifth.com

Peter Brindley
Executive Vice President,
Head of Real Estate
212 237 3156
pbrindley@pgre.com

Douglas Neye
Senior Vice President
212 237 2976
dneye@pgre.com

Sean Kirk
Assistant Vice President – Leasing
212 237 3168
skirk@pgre.com


PARAMOUNT
GROUP

Seven Twelve Fifth Avenue

21st Floor

Partial Floor Plan (New Prebuilt)

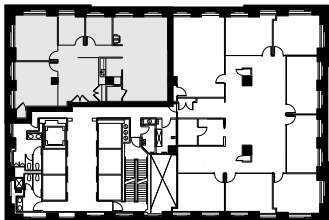
3,153 RSF

| | |
|-----------------|----|
| Private Offices | 3 |
| Workstations | 10 |
| Conference Room | 1 |
| IT Room | 1 |

| | |
|--------------|---|
| Open Pantry | 1 |
| Copy Area | 1 |
| Coat Closets | 1 |



Key Plan



712 5th Avenue
New York, NY 10019
SevenTwelveFifth.com

Peter Brindley
Executive Vice President,
Head of Real Estate
212 237 3156
pbrindley@pgre.com

Douglas Neye
Senior Vice President
212 237 2976
dneye@pgre.com

Sean Kirk
Assistant Vice President – Leasing
212 237 3168
skirk@pgre.com

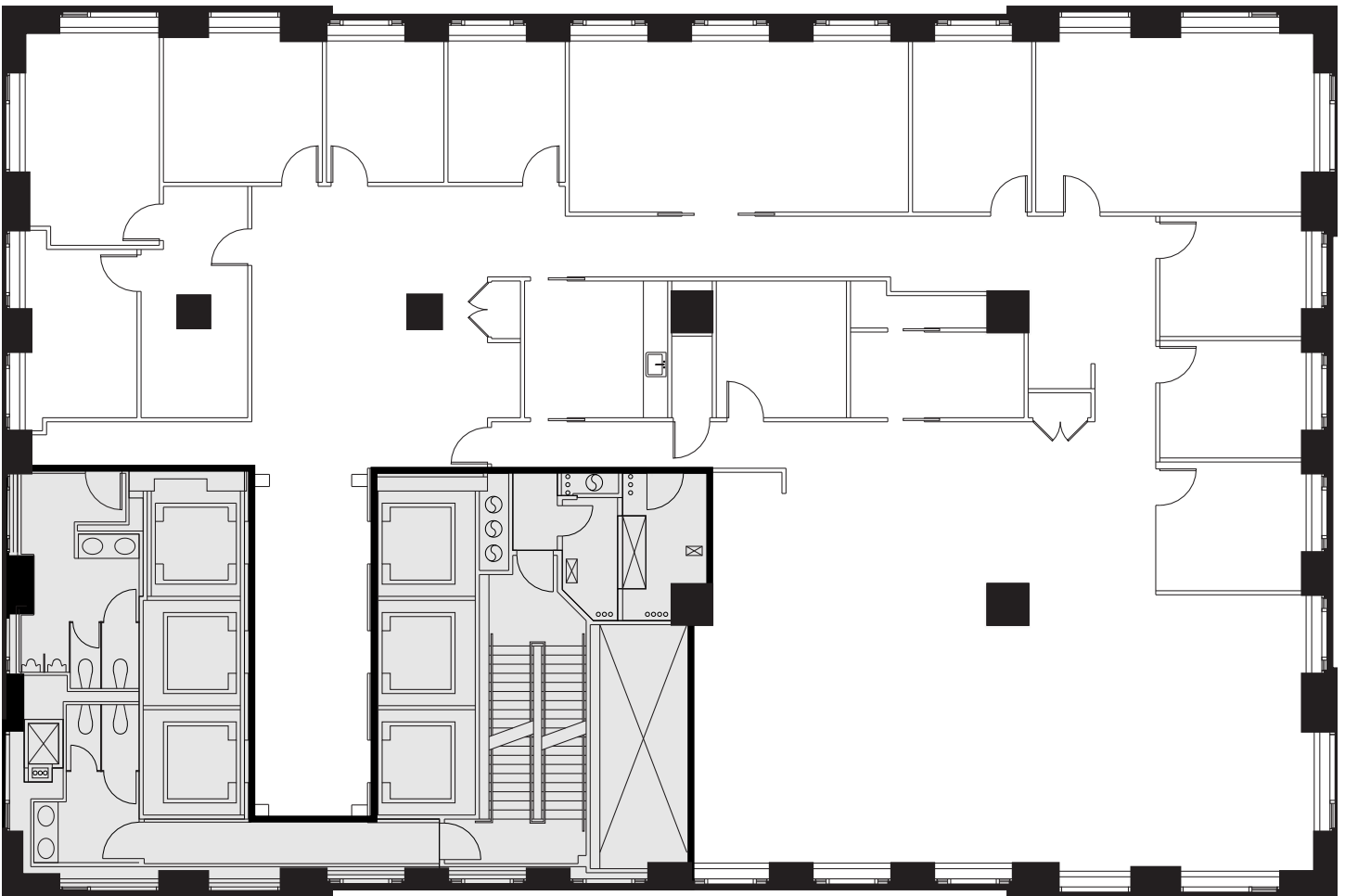

PARAMOUNT
GROUP

Seven Twelve Fifth Avenue

20th
Floor

Full Floor Plan Existing Conditions

9,697 RSF



712 5th Avenue
New York, NY 10019

SevenTwelveFifth.com

Peter Brindley
Executive Vice President,
Head of Real Estate
212 237 3156
pbrindley@pgre.com

Douglas Neye
Senior Vice President
212 237 2976
dneye@pgre.com

Sean Kirk
Assistant Vice President – Leasing
212 237 3168
skirk@pgre.com

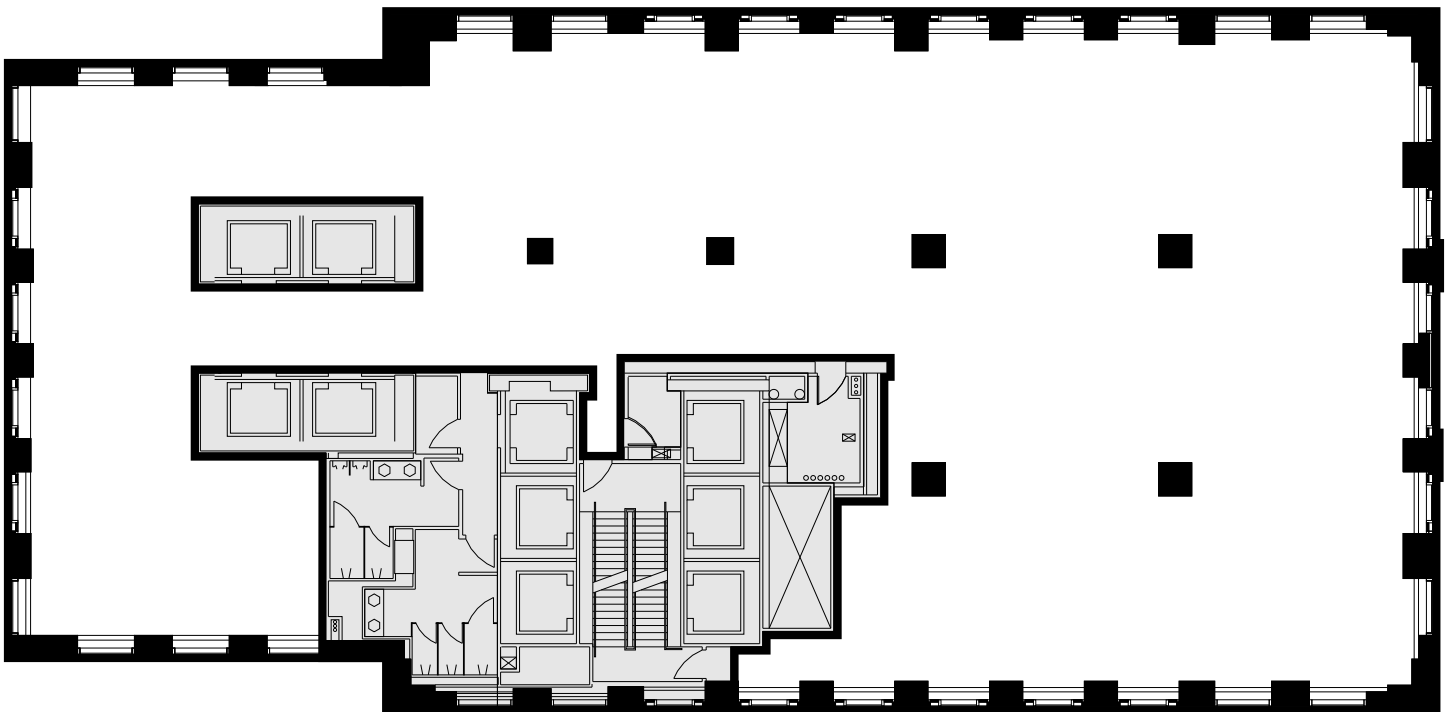

PARAMOUNT
GROUP

Seven Twelve Fifth Avenue

12th
Floor

Full Floor Core Plan

12,930 RSF



712 5th Avenue
New York, NY 10019
SevenTwelveFifth.com

Peter Brindley
Executive Vice President,
Head of Real Estate
212 237 3156
pbrindley@pgre.com

Douglas Neye
Senior Vice President
212 237 2976
dneye@pgre.com

Sean Kirk
Assistant Vice President – Leasing
212 237 3168
skirk@pgre.com

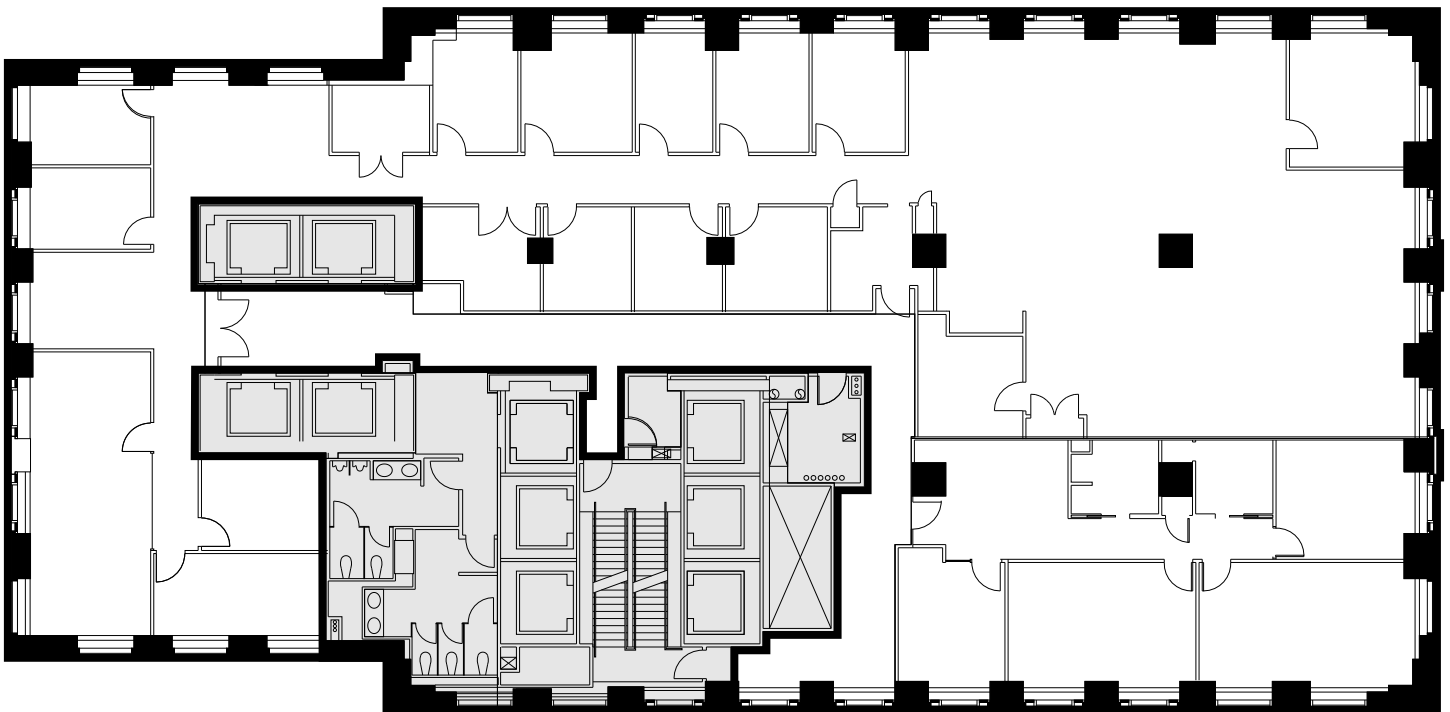

PARAMOUNT
GROUP

Seven Twelve Fifth Avenue

12th Floor

Full Floor Plan Existing Conditions (As Built)

12,930 RSF



712 5th Avenue
New York, NY 10019
SevenTwelveFifth.com

Peter Brindley
Executive Vice President,
Head of Real Estate
212 237 3156
pbrindley@pgre.com

Douglas Neye
Senior Vice President
212 237 2976
dneye@pgre.com

Sean Kirk
Assistant Vice President – Leasing
212 237 3168
skirk@pgre.com


PARAMOUNT
GROUP

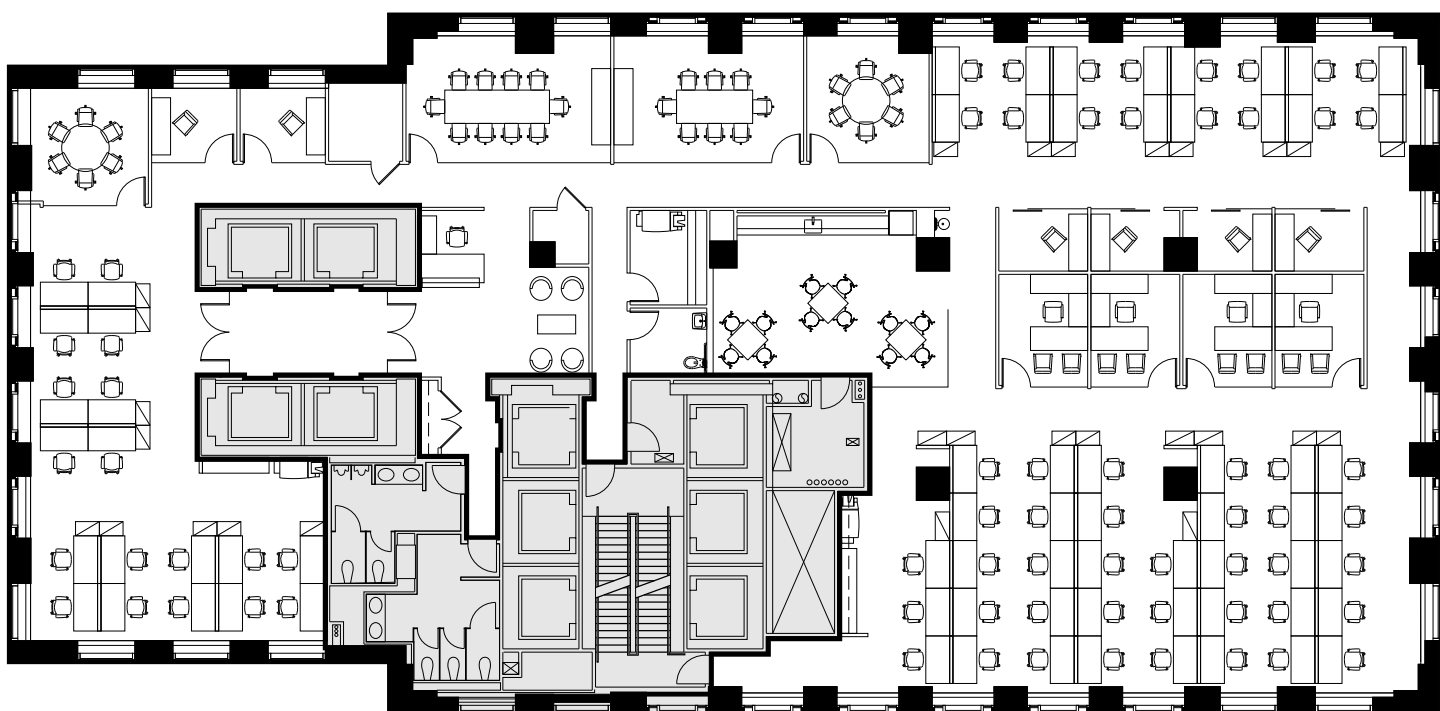
Seven Twelve Fifth Avenue

12th Floor

Full Floor Plan Open Plan (Test-Fit)

12,930 RSF

| | | | | | |
|-----------------|----|------------------|---|-------------|---|
| Private Offices | 4 | Conference Rooms | 3 | Copy Areas | 3 |
| Workstations | 70 | IT Room | 1 | Coat Closet | 1 |
| Reception | 1 | Phone Rooms | 6 | | |
| Board Room | 1 | Open Pantry | 1 | | |



712 5th Avenue
New York, NY 10019
SevenTwelveFifth.com

Peter Brindley
Executive Vice President,
Head of Real Estate
212 237 3156
pbrindley@pgre.com

Douglas Neye
Senior Vice President
212 237 2976
dneye@pgre.com

Sean Kirk
Assistant Vice President – Leasing
212 237 3168
skirk@pgre.com


PARAMOUNT
GROUP

Seven Twelve Fifth Avenue

12th Floor

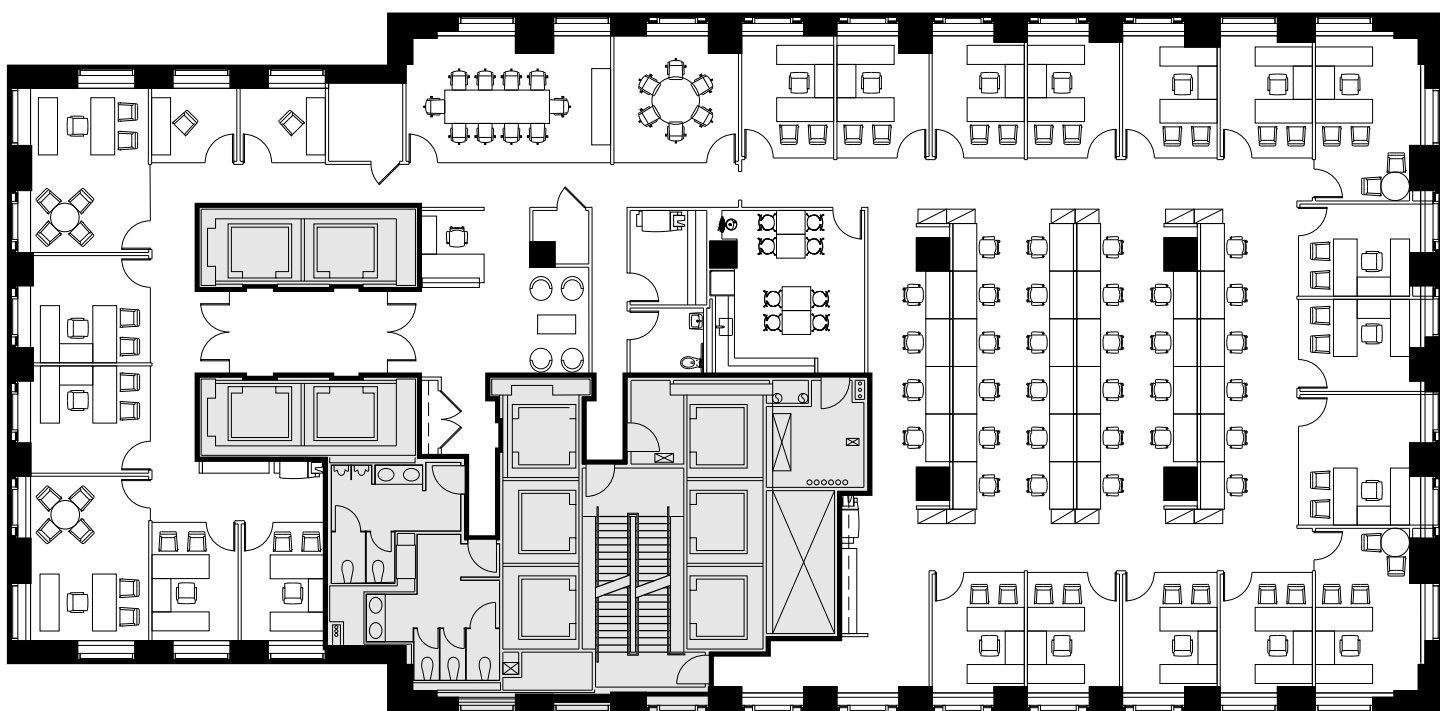
Full Floor Plan Office Intensive (Test-Fit)

12,930 RSF

| | |
|-------------------|----|
| Executive Offices | 4 |
| Private Offices | 17 |
| Workstations | 32 |
| Reception | 1 |

| | |
|-----------------|---|
| Board Room | 1 |
| Conference Room | 1 |
| IT Room | 1 |
| Phone Rooms | 2 |

| | |
|--------------|---|
| Open Pantry | 1 |
| Copy Areas | 3 |
| Coat Closet | 1 |
| Storage Room | 1 |



712 5th Avenue
New York, NY 10019
SevenTwelveFifth.com

Peter Brindley
Executive Vice President,
Head of Real Estate
212 237 3156
pbrindley@pgre.com

Douglas Neye
Senior Vice President
212 237 2976
dneye@pgre.com

Sean Kirk
Assistant Vice President – Leasing
212 237 3168
skirk@pgre.com

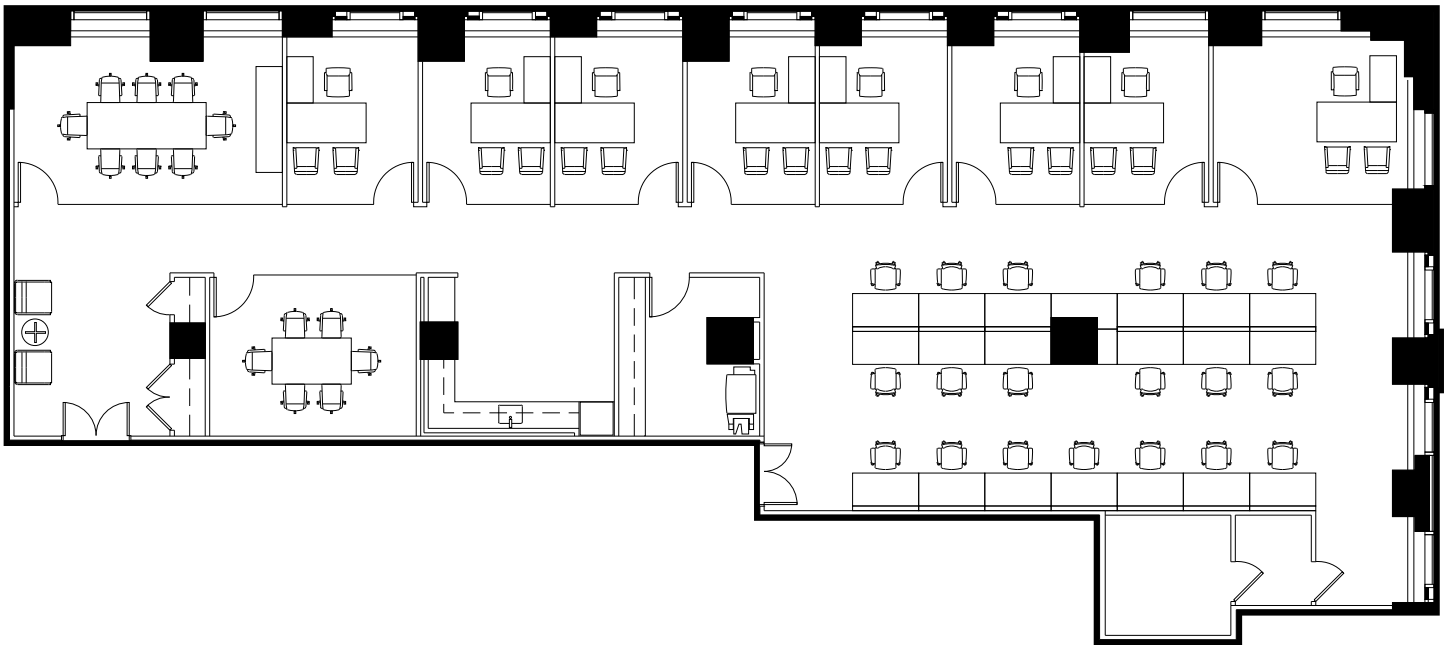

PARAMOUNT
GROUP

Seven Twelve Fifth Avenue

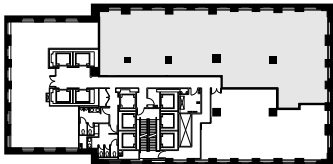
9th Floor

Partial Floor Plan (Test-Fit)

6,660 RSF



Key Plan



712 5th Avenue
New York, NY 10019
SevenTwelveFifth.com

Peter Brindley
Executive Vice President,
Head of Real Estate
212 237 3156
pbrindley@pgre.com

Douglas Neye
Senior Vice President
212 237 2976
dneye@pgre.com

Sean Kirk
Assistant Vice President – Leasing
212 237 3168
skirk@pgre.com


PARAMOUNT
GROUP